

COLLEGE OF SOUTHERN IDAHO
BOARD OF TRUSTEES MEETING

MONDAY, APRIL 22, 1996

PRESIDENT'S BOARD ROOM

5:30 p.m.

AGENDA

MINUTES

TREASURER'S REPORT

Bid: Tennis Court Lighting

Bid: Vehicle Lease

OLD AND NEW BUSINESS

Water Study Update: *Dr. Chuck Brockway*

Adopt a Trail: *Karl Kleinkopf*

Technology Update: *Dr. Ken Campbell*

Taylor Building Remodel: *Architects*

COLLEGE OF SOUTHERN IDAHO
COMMUNITY COLLEGE DISTRICT
BOARD OF TRUSTEES MEETING
APRIL 22, 1996

CALL TO ORDER: 5:30 p.m. PRESIDING: LeRoy Craig

ATTENDING: Trustees: LeRoy Craig, Dr. Thad Scholes, Dr.
Charles Lehrman, Bill Babcock and Donna Brizee

College Administration: Gerald Meyerhoeffer, President
John M. Mason, Secretary/Treasurer
Robert Alexander, College Attorney
Dr. Jerry Beck, Vice President of Instruction
Dr. Joan Edwards, Vice President of Planning,
Research and Development
Dr. Michael Glenn, Vocational Dean
Dr. John Martin, Registrar
Dr. Ken Campbell, Director of Institutional
Research
Graydon Stanley, Director of Student Information
Ron Shopbell, Director of Continuing Education
Dick Sterling, Physical Plant Director
Jeff Duggan, Assistant to the President
Annette Jenkins, Public Information Director

CSI Staff: Karl Kleinkopf, Louise Flowers, Lynn Irons,
Janie Brumbaugh and Bill Beale

Visitors: Lois Lehrman, Pauline Meyerhoeffer, Judy
Scholes, Margi Babcock, Joyce Craig, Dick Brizee, Kelly
Cope, Brent Keim, Shane Ridley-Stevens, Chuck Brockway,
Dave Turner and Steve Sell

Faculty Representatives: Penny Glenn, Alice Anderson

Times News: None

MINUTES OF March 20, 1996 were approved as written on MOTION
by Bill Babcock. Affirmative vote was unanimous.

TREASURERS REPORT: Acceptance of the Treasurer's report was
approved on MOTION by Dr. Thad Scholes. Affirmative vote
was unanimous.

BIDS:

1. We advertised for a tennis court lighting system and did
not receive any bids. The Board authorized the
administration to enter into negotiation with vendors and
purchase a system that meets specifications.

2. The Board was advised that they would be contacted by the President on Thursday, April 25th, concerning the awarding of a vehicle lease/purchase agreement bid.

PRESIDENT'S REPORT:

1. Karl Kleinkopf reported on the "Adopt-A-Trail" program for the fitness trail. He said the program was very successful with eleven of the twelve areas already having sponsors. Mr. Kleinkopf showed a sample sign denoting the Board members names and the area they had agreed to sponsor.

2. Dr. Chuck Brockway reported on the status of the campus water study. He stated that the plan would provide the basis for the conversion of the campus irrigation water to canal water. The study will also outline a coordinated campus-wide drainage plan.

The estimated completion date for the study is May 15, 1996.

3. Dr. Ken Campbell made a presentation to the Board concerning the impact of technology on education. He noted that voice, video and data were being transmitted via the same mode which opens up a wide range of possibilities for education. We are experiencing decreasing costs with increasing capabilities.

Dr. Campbell stated that major changes were taking place in education including competition from the private sector. The emphasis is on reduced costs, increased access and more efficient learning.

President Meyerhoeffer noted that Governor Batt had stated that investments in technology would have to be funded from existing budgets. The Governor has recommended that we allocate one percent of our existing budget to research and development and respond to competitiveness.

4. Graydon Stanley introduced outgoing student body vice president Kelly Cope and outgoing student body president Brent Keim. He also introduced incoming student body president Shane Ridley-Stevens.

Brent Keim read ASCSI Senate Resolution Number One to the Board recommending that the new library/academic development center be named the "Gerald R. Meyerhoeffer Building".

Donna Brizee read the College of Southern Idaho Board of Trustees Letter of Resolution recommending the new library/academic development center be named the "Gerald R. Meyerhoeffer Building".

CSI Trustees
April 22, 1996
Page 3

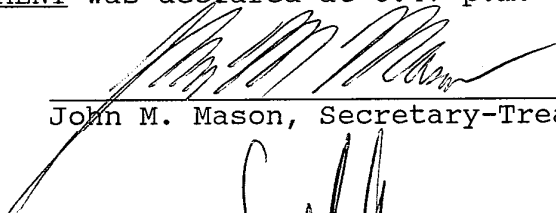
The Board approved both resolutions on MOTION by Donna Brizee. Affirmative vote was unanimous.

5. Dave Turner and Steve Sell of CTA Architects made a presentation concerning the exiting options on the old library remodel plan. The Board decided on the option of adding a stairway to the north east section of the remodeled area. Affirmative vote was unanimous.

6. The President reported the following:


- a. The Tower was planned as a tower and not made of left over beams from the fine arts building or the gym.
- b. The Small Business Development Center was rated as outstanding by an independent evaluation team.
- c. Beverly Vanderboom, one of David West's English students, has had some of her poems published by Phi Theta Kappa.

ADJOURNMENT was declared at 6:47 p.m.



John M. Mason, Secretary-Treasurer

APPROVED May 28, 1996



Chairman

C.S.I.

ADOPT-A-TRAIL

4/22/96

KARL KLEINKOPF

HISTORY

The C.S.I. fitness trail was planned in 1983 with the cooperation of the C.S.I. Physical Education Department and the Twin Falls Rotary Club. Actual layout was done by Dave Kiesig, Herb McCully and Karl Kleinkopf. Financing for the project came from C.S.I., many community donors, college administration, faculty and staff with the majority of the money raised by the Twin Falls Rotary Club.

Construction of the 2.1 miles of trail complete with fitness stations for children, adults and seniors was completed in the fall of 1984. Special thanks should go to the following: the C.S.I. Administration, the C.S.I. Physical Education Department, T.F. Rotary Club members, C.S.I. Maintenance, Faculty and Staff, The Idaho National Guard, and hundreds of community volunteers.

During the first 12 years of service, yearly work parties have been organized under the title "TRAIL DAZE." Many man hours have been donated to help the college maintain this excellent facility. In the fall of 1995, the C.S.I. Physical Education Department planned the **ADOPT-A-TRAIL** concept. The following individuals, groups businesses have taken part in the implementation of this project:

C.S.I. BOARD OF TRUSTEES (10-11) see att. map.
DR.S RIDGEWAY,GEIST, AND STAFF (1-2)
LEFORGEE, ROGERS,&BRAGA,CHTD. (7-8)
DEMOLAY, TWIN FALLS CHAPTER (4-13)
SNAKE RIVER LYONS (1-9-10)
LDS TWIN FALLS WEST STAKE (8-9)
MIKE & CINDY GLENN (11-12)
HARAMBEE CLUB OF TWIN FALLS(2-3)
OVER 60 AND GETTING FIT (3-4)
TWIN FALLS 6TH WARD LDS YOUTH (5-12)
NOON TIME GRAZERS (6-7) [DR. SCHOLLES, BILL BABCOCK,
DAVE PERKINS, KARL KLEINKOPF, KEITH FERRELL, FOGGY
FISHER, AND JIM DAWSON]
COACHES DETAIL (5-6) [BEN STROUD, BOYD GRANT, ERIC
HOVEY, STEVE IRONS, GARY SIEVERS, JIM THRASH, TONY
MANNEN, JERRY SIVULICH, WADE BOND]

MEMORANDUM

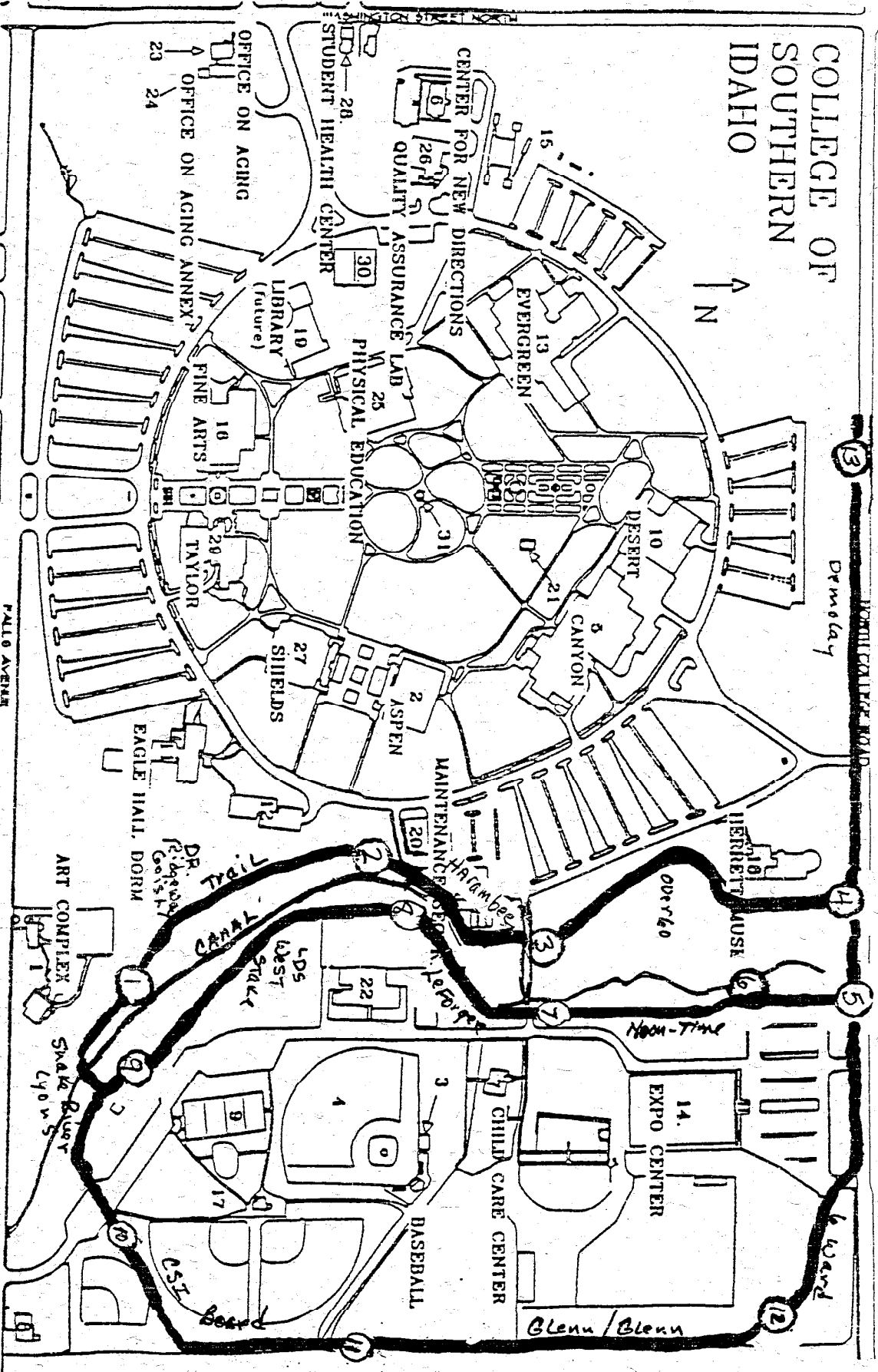
DATE: 16 April, 1996
TO: Adopt-A-Trail Volunteers
FROM: Karl Kleinkopf
RE: Start
CC: All

Thank you for volunteering for the adopt-a-trail program at C.S.I. We should have all of your needed materials in place by the time you receive this letter. Most of the signs are completed and ready to be installed. Here are some guidelines:

1. A qualified Ford tractor loader operator would help.
2. Put down the same materials that are currently in place. Exceptions to this are possible with Karl or Dave Kiesig's O.K.
3. Make the outing fun and try to keep your area up at your own choosing of time and day if you have cleared the activity with the appropriate individuals. Feel free to picnic etc.
4. Use only small pick-ups on the trail, full size pickups hit the edging. Avoid all sprinklers. **Do not drive on the grass.** A 1 1/2 to 2" bark surface is enough. The 50% bark 50% crushed rock surface works great in windy areas. The 100% crushed cinders work the best on North College and also swampy areas.
5. Bring hammers, saws, shovels, weeding tools and gloves. You will weed the trail and let the college do the spraying.
6. Thank you. Please call before you start.

Karl's ext. 733-9554 x2487
Dave's ext. 733-9554 x2606

COLLEGE OF SOUTHERN IDAHO



1. ART COMPLEX
2. ASPEN BUILDING
3. BASEBALL CLUBHOUSE
4. CANYON BUILDING
5. CENTER FOR NEW DIRECTIONS
6. CHILD CARE CENTER
7. CITY FIRE STATION
8. CITY TENNIS COURTS
9. T BLDG
10. MAINTENANCE/SECURITY
11. HALL DORM

12. EAGLE HALL, PARKING
13. EVERGREEN BUILDING
14. EXPO CENTER
15. FIELD EVENT AREA
16. FINE ARTS BUILDING
17. FRONTIER FIELD
18. HENRETT MUSEUM
19. LIBRARY
20. MAINTENANCE/SECURITY
21. McMANNA SE GARDEN

22. NATIONAL GUARD ARMORY
23. OFFICE ON AGING
24. OFFICE ON AGING ANNEX
25. PHYSICAL EDUCATION BUILDING
26. QUALITY ASSURANCE LAB
27. SHIELDS BUILDING
28. STUDENT HEALTH CENTER
29. TAYLOR ADMINISTRATION BUILDING
30. TENNIS COURTS
31. TOWER

Progress Report
College of Southern Idaho
Evaluation of Water Use and Drainage Alternatives
April 22, 1996
Brockway Engineering PLLC

Progress on this project is nearly on schedule with the new proposed completion date of May 15, 1996. The advisory committee for the project has been formed and has had one meeting. Specific progress and tasks to date are as follows:

1. Delineation of autonomous irrigation blocks

Irrigated areas which can be isolated from the existing water system and potentially served with canal water have been determined. There are a total of 122.0 acres in 36 different blocks currently irrigated from the Twin Falls City system with the largest block approximately 10 acres.

2. Identification of distribution system configuration

Where possible, the pipe and sprinkler sizes within each irrigated block have been identified. Data are not available for each block.

3. Main line pipe size identification

All main line sizes and valve boxes have been located and sizes of the main lines serving each irrigated block have been determined.

4. Twin Falls City service taps

Twin Falls City meters and service taps have been located and identified with City billing codes. Interconnections, where possible, have been determined. Some interconnections have not been determined because no schematics or drawings exist to identify the distribution system.

5. Irrigated blocks served from domestic services

Generally irrigated blocks are served from main lines emanating from the loop system and are independent of building services. In almost all cases domestic and irrigation systems are served from the main looped distribution system. However, two blocks, the Fine Arts Center area and the new Eagle dormitory irrigated area are apparently served through the building distribution system and may not be amenable to conversion to canal water.

6. Canal Company laterals and existing structures

The Canal Company delivery system has been mapped and potential service sites on piped laterals and the Perrine Coulee have been identified.

7. Advisory Committee

An advisory committee consisting of members from the Twin Falls Canal Company, City of Twin Falls, Natural Resources Conservation Service, Idaho Department of Water Resources, and College of Southern Idaho personnel has been formed and met one time. Significant findings and concerns were addressed:

- a. Concern relative to irrigation of high use areas with canal water
- b. Back flow protection if part of the irrigation system is combined with City water
- c. 'Big' City water users can expect at least a 20% increase in water costs from adjustment of Twin Falls City block rates and general rate increases.
- d. The possible use of xeroscape(low water use landscaping) was discussed
- e. The Perrine Coulee is considered a Canal Company lateral which serves downstream users and stream channel alteration permits will likely not be required for diversion facilities
- f. Irrigation of CSI Foundation lands should be considered in the irrigation plan
- g. Possible inclusion of School District lands should be considered.

8. Preliminary water use estimate for each irrigated block

A preliminary determination of water use requirements for each irrigated block has been made. It is estimated that the maximum diversion for water rights purposes would be about 854 gpm or 1.9 cfs. This is the maximum diversion requirement and does not consider set times and alternating block irrigation.

9 Canal Company shares

A review of Twin Falls Canal Company records shows several blocks of shares available to the District and the Foundation and to the City of Twin Falls on the Frontier Field area.

CSI District	165.62	Applicable to main campus-not including Frontier Field
R.A and F.W. Lyon	1.5	Corner of Washington and Falls
CSI District	10.0	Applicable to main campus
CSI Foundation	41.11	
CSI Foundation	10.0	
CSI Fondation	36	
City of Twin Falls	??	Currently transferred to Low Line Canal

Currently a large block of shares are rented on a yearly basis to C&B Cattle Co. of which 149.99 of the shares are CSI District shares.

10 Drainage patterns analysis

The overall surface drainage patterns for the campus have been evaluated including storm water flow determinations and the direction and destination of current storm water flows.

11. Parking lot and street drainage problem areas

Areas of ponding and poor drainage on parking lots and streets have been identified by site inspection. These areas are evident from deteriorated pavement and evidence of ponded conditions.

12. Drainage system alternatives

Several alternative drainage systems or plans have been identified. A complete storm sewer system to collect the entire campus runoff with piping to the Perrine Coulee is one alternative. A second would be a main system for the entire campus piped to Lateral 42. Individual storm retention systems(storage) for each drainage area are potentially possible. Best Management Practices for on-line and off-line systems are being defined.

Tasks remaining to be performed include:

1. Further definition of alternative diversion sites from the Canal Company system
2. Determination of overall irrigation system conversion alternatives including piping system conversion, canal pumping sites and discharge requirements.
3. Integration of storm water plan with Canal Company and City plans and systems
4. Cost estimate for irrigation and drainage systems
5. Determination of Best Management Practices for each storm water system alternative
6. Final Report

The scheduled completion date is May 15, 1996.

Technology in Education

Technology Changes

Merging of data, video and voice to digital format

Internet

Decreasing costs for increasing performance

In future we will spend more time talking to our tv and watching our telephone

How do these technological innovations impact education

viewed by policymakers as avenue to reduce costs without decreasing access

cost of education has increased 200% since 1980 vs. CPI increase of 150%

however some educators fear that it may "de-personalize" education and reduce quality

NCHEMS article suggests available data indicates quality of learning about same as traditional methods

reported gains in student self-confidence and retention

My feeling is we need to recognize strengths of tech tools and utilize them to enhance education

Need to view technology as tool to enhance learning not replace teaching

Goals via technology

1) to increase access in two ways

options for place bound students - "virtual" university

greater student teacher interactions due to more self directed learning

2) to increase learning curve

e.g. flexible self-paced formats via computers

circumvent course availability roadblocks

3) reduce unit costs

e.g. through increasing number of students served by given class

augmenting instructor time dedicated to teaching

Available tools

Internet resources

CD ROM

e-mail

voice mail

WWW

courses, e.g. BSU started by making all course syllabi available

administration, e.g. course schedule, admission forms

Chat Rooms

distance education

"traditional" outreach centers

2-way interactive with multi-media capability

video tapes, CD-ROMs or WWW pages supplemented with e-mail/voice mail

Technology in Education

Examples

WSU offering 4-yr degrees via videotape and e-mail

Utah - massive fiber installation

BSU

Internet courses - Management

Survey of Western Art in Multimedia presentation

Ntl Tech University -- partnership b/w Stanford, MIT, Georgia Tech to provide engineering expertise

U of Phoenix -- developed specifically to provide distance learning

CSI

Health Occupations class (Dr. McCluskey at TFC&H)

Telecommunication system with 18 sites (some under development) throughout MV

Currently approximately 70 course hours per week sent to off campus sites

Next semester will broadcast Child Psychology, Medical Terminology, Biology to area high schools
e-mail (e.g. Ken Bingham's English classes)

Intro to Plant Science (Jim Wilson)

Obstacles to Implementing Tech Tools in Instruction

Capital Costs of implementation

short run tend to offset any gains

costs of adapting courses to utilize technology

Faculty Training

development

delivery

Computer and Internet access (esp. MV)

Administrative tasks

e.g. registering students for Internet class

Future of Education - Robert Hetterick, EDUCOM

Increased competition between providers

Flexible Staffing

Decreased tolerance for educational enterprise

Time shift education (not time and place bound)

Less state funding

Less capital investment

Feel a sense of urgency to meet these challenges in some part through technology

IN THE SENATE

RESOLUTION #1

**BY THE ASCSI SENATE
1995-96**

**TO THE BOARD OF TRUSTEES OF THE COLLEGE OF SOUTHERN IDAHO REGARDING
THE NAMING OF THE NEW LIBRARY AND ACADEMIC DEVELOPMENT BUILDING:**

WHEREAS, the ASCSI Senate, acting as representatives of the Associated Student Body, are empowered to make recommendations and requests to the Board of Trustees regarding matters of mutual concern, and

WHEREAS, the new Library and Academic Development Building is central to student learning and success, and

WHEREAS, President Meyerhoeffer provided the vision and leadership to make the Library and Academic Development Building a reality on our campus, and

WHEREAS, President Meyerhoeffer has faithfully and tirelessly guided the College through the past twelve years of positive growth and change, and

WHEREAS, President Meyerhoeffer has firmly held to an educational philosophy that places the greatest importance upon the success of students, and

WHEREAS, President Meyerhoeffer, through his warmth, generosity, and genuine concern for students, has fostered a cooperative spirit between students, faculty, staff, and administration that is unrivaled at other institutions of higher education, and

WHEREAS, President Meyerhoeffer and his influence will continue to inspire and lead many future students toward greater successes,

NOW, THEREFORE BE IT RESOLVED BY THE ASCSI SENATE, ACTING AS REPRESENTATIVES OF CURRENT AND PAST STUDENTS OF THE COLLEGE OF SOUTHERN IDAHO, THAT WE ENTHUSIASTICALLY AND GRATEFULLY RECOMMEND TO THE BOARD OF TRUSTEES THAT THE NEW LIBRARY AND ACADEMIC DEVELOPMENT BUILDING BE NAMED

"THE GERALD R. MEYERHOEFFER BUILDING".

**COLLEGE OF SOUTHERN IDAHO
LETTER OF RESOLUTION**

Naming of the New Library/Academic Development Building

WHEREAS, the Board of Trustees of the College of Southern Idaho is responsible for naming college facilities.

WHEREAS, President Meyerhoeffer developed the vision for the Library/Academic Development Facility,

WHEREAS, President Meyerhoeffer developed the funding strategy and led the successful funding efforts for the new facility,

WHEREAS, President Meyerhoeffer has guided the College of Southern Idaho through 12 years of tremendous growth, exhibiting exceptional leadership and effectiveness which have elevated the institution to a premier position in the Intermountain West.

WHEREAS, the College of Southern Idaho Board of Trustees recognizes the character demonstrated by President Meyerhoeffer as well as his tireless work for and dedication to the College of Southern Idaho, be it

RESOLVED, that the new Library/Academic Development Center be named the Gerald R. Meyerhoeffer Building.

Taylor Building Old Library Remodel
College of Southern Idaho
April 22, 1996

**Exit Path Improvements
Required by State Plan Review Findings**

- **Scheme A**

Upgrade existing corridors and lobbies to bring them up to one-hour fire rating. Estimated construction cost: \$60,000.

- **Scheme B**

Enclose existing east stair adjacent to area of remodel. Estimated construction cost: \$20,000.

- **Scheme C**

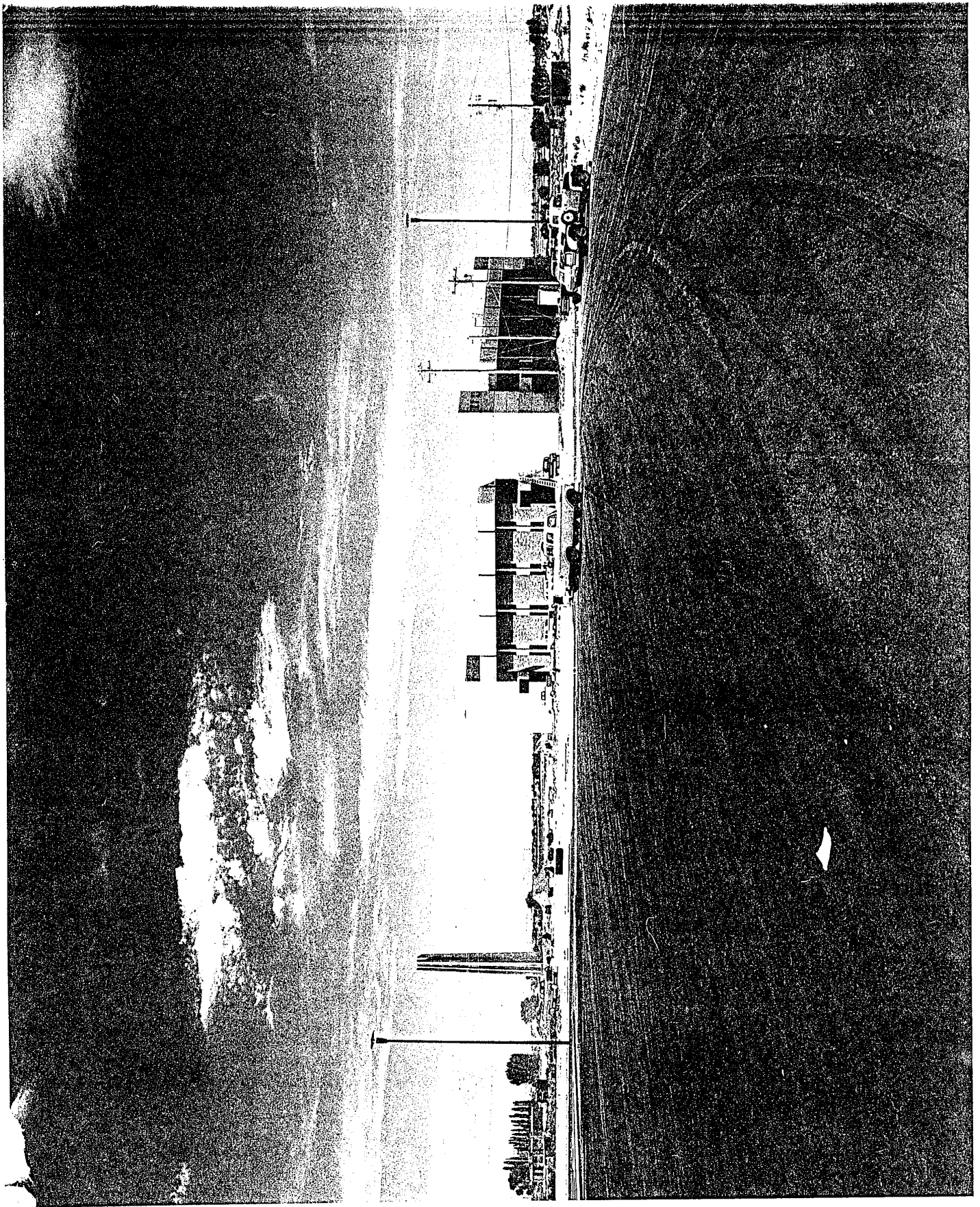
Add exterior stair at northeast area of remodel. Estimated construction cost: \$25,000.

- **Scheme D**

Add exterior stair at southeast area of remodel. Estimated construction cost: \$25,000.

- **Scheme E**

Add exterior stair at south side of remodeled area. Estimated construction cost: \$25,000.



Memo: To the desk of Louise Flowers

From: Beverly VanderBoom, former Omicron Xi President

3/29/96 Friday

Dear Louise,

This memo is to inform you that one of my literary submissions has been accepted by Phi Theta Kappa for publication in the anthology entitled *Nota Bene*, to be distributed to all U.S. Junior College libraries this Fall. The competition ran as an International contest for Phi Theta Kappa's Literary Citation Award. 900 entries in the genres of poetry, short stories and essays were reviewed by a panel of judges. 13 of the entries were chosen for publication, including the Citation award winner. I am pleased and proud to inform you that my poetry entry entitled "The Guardian" is among those selections chosen for publication. The Omicron Xi Advisors would like Mr. Meyerhoeffer to be informed of the recognition afforded CSI, since he is consistently so supportive of Phi Theta Kappa here at the College of Southern Idaho.

Cordially,


Beverly VanderBoom