

NEWS AND UPDATES

Student Events & Activities Newsletter

January 29, 2024 | Volume 3: Issue 14

Join the CSI Peer Mentoring Program!



CSI PEER MENTORING

When you sign up for the CSI Peer Mentoring Program, you'll be matched with a mentor, a fellow CSI Student, Faculty or Staff, who can offer personalized support and assistance. This mentor can support you as you navigate your goals and challenges, as well as help you access resources that allow you to make the most of your year. You will also be encouraged to participate in the events and activities that we host to help create a sense of belonging and connection during your time at CSI.

[Join Now](#)

CSI Peer Mentoring

When you sign up for the CSI Peer Mentoring Program, you'll be matched with a mentor, a fellow CSI Student, Faculty or Staff, who can offer personalized support and assistance. This mentor can support you as you navigate your goals and challenges, as well as help you access resources that allow you to make the most of your year.

[Join Now](#)

EVENTS

Student ID with SPRING 2024 sticker is required to attend events. Don't have the sticker, please stop by Enrollment Services in the Taylor Building.

Eagle Hour Winter Wonders

Winter Wonders

Eat Cookies

Drink Hot Chocolate

Paint Pictures



Tuesday, January 30th

12:00-2:00 PM

Location: Upper SUB

Eat Cookies
Drink Hot Chocolate
Paint Pictures



EAGLE HOUR

Learn about the CSI Peer Mentoring Program and get help applying for graduation!

FREE WALKING TACOS

**THURSDAY
FEBRUARY 1ST
12:00 - 2:00PM**



Location
Upper
Sub

If you apply for graduation during the activity your name will be entered, along with individuals that have already applied, into a raffle for a free grad pack!

Eagle Hour

**Thursday,
February 1st
12:00-2:00 PM**

Location: Upper SUB

Learn about CSI Peer Mentoring Program and get help applying for graduation!

Free Walking Tacos

If you apply for graduation during the activity your name will be entered into a raffle for a free grad pack!

**Glory Road
Free
Showing**



Free Showing - February 5th, 2024
6:30PM in the Fine Arts Auditorium

© SWANK MOTION PICTURES, INC.

Monday, February
5th
6:30PM

Location: Fine Arts
Auditorium

Free to students,
faculty and staff!

HOLLYWOOD VS HO-DOWN

SWEETHEARTS SWING
SPONSORED BY: AG CLUB
DRESS: HOLLYWOOD OR HO-DOWN SEMI CASUAL
FEBRUARY 9, 2024
HERRETT CENTER
RICK ALLEN ROOM
DANCE STARTS 6:30

Buy your tickets in the Evergreen Building
Cash Only Singles: \$15 Couples: \$20
Refreshments, Music, Photo Booth

DO NOT NEED TO BE AN AG CLUB MEMBER TO PARTICIPATE!
WHOMEVER BUYS TICKETS MUST HAVE CSI ID
NON-CSI STUDENTS ARE WELCOME

Sweethearts Swing

Friday, February
9th
6:30 PM

Location: Herrett
Center Rick Allen
Room

Dress: Hollywood or
Ho-Down Semi Casual.

Buy your tickets in the
Evergreen Building,
Cash Only
Singles: \$15
Couples \$20

Refreshments, Music,
Photo Booth



6th Annual All Business Conference Volunteers Needed

Students can actively participate in a professional setting and gain exposure to local entrepreneurs, lenders, and various influential leaders. The conference promises to be a significant networking event, providing volunteers with a unique chance to connect with key figures in the business community.

Responsibilities include:

Aiding in the registration process, assisting our esteemed speakers, facilitating the set-up and take-down procedures.

Conference will be held on April 9, 2024 at CSI Campus in the Fine Arts Building. If you have any questions, contact 208.732.6450 or email Eric Amador eamador@csi.edu

[Sign Up Here](#)



Work Study Openings

Check out the work study opportunities that are available to you!

[Find Info Here](#)

Have you applied for graduation?



APPLY NOW



Have you applied for graduation? You can get information about graduation [here](#) or by going to CSI.edu, current students, registrar and then clicking on graduation. Apply by March 8th, 2024 to ensure your name is in the commencement booklet.



LIVE ON CAMPUS

In Eagle Hall



GET THE FULL COLLEGE EXPERIENCE:

Enjoy events and activities, make connections, friends, and interact with our amazing staff.



SAVE TIME AND FUEL: Get extra sleep by eliminating the commute. All classes are within walking distance.



SAVE MONEY: Save money on food and rent compared to other local housing options.



AMENITIES: Computer Lab, Activity Center, Meal Plan included, access to the Student Rec Center and free parking.



**SCAN FOR
MORE INFO**

CONTACT

AIMEE BOYER - Residence Hall Coordinator
housing@csi.edu 208.732.6575



Live on Campus - In Eagle Hall

Get the full college experience and save time, fuel and money!
Contact our Residence Hall Coordinator - Aimee Boyer at housing@csi.edu or 208.732.6575 if you are interested.

Plan for your future...

CSI TRANSFER FAIR

JANUARY 31, 2024

TWIN FALLS CAMPUS

FINE ARTS LOBBY

11:00 AM - 2:00 PM

MINI-CASSIA CENTER

4:00 - 6:00 PM

FREE PIZZA, SWAG AND RAFFLE DRAWINGS!

Students who attend will be entered into a drawing for a chance to win a \$500 CSI Scholarship!



Regional four-year Colleges/Universities, Military, and Internship opportunities will be available to visit with students about the transfer process. Learn about academic programs, financial aid, scholarships, internships and housing.

The CSI Transfer Fair is coming up on January 31, 2024 here are the Twin Fall Campus from 11:00 AM - 2:00 PM in the Fine Arts Lobby and then from 4:00 - 6:00 PM at the Mini-Cassia Center. Free pizza, swag and a raffle drawing for a chance to win a \$500 CSI scholarship!

OPEN TO CURRENT AND NEW CSI STUDENTS

CSI GENERAL SCHOLARSHIP APPLICATION

MARCH 1, 2024

Priority Date for the
2024-2025 academic year

Apply now on your MyCSI:
→ Finances tile
→ Scholarships tile
→ CSI Scholarship application

REVIEW
departmental
scholarship
opportunities:



www.csi.edu/financial-aid/scholarships/csi-scholarships.aspx

IDAHO OPPORTUNITY SCHOLARSHIP

Applications and FAFSA are due
MARCH 1, 2024



boardofed.idaho.gov/scholarships/idaho-opportunity-scholarship



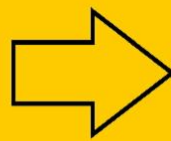
IDAHO LAUNCH

APPLICATIONS DUE
APRIL 15
SCAN TO LEARN MORE



CSI CHILDCARE SCHOLARSHIP NOW OPEN

SCAN
TO LEARN MORE



CSI.EDU/FINANCIAL-AID/SCHOLARSHIPS

CCAMPIS Child Care Scholarship

Do you have children under the age of 5?
Are you a current student at CSI?
Do you have a GPA of at least 2.0?

If so, you may be eligible for a CCAMPIS Child Care Scholarship

The English Department of the College of Southern Idaho is taking submissions for its online journal, *SILO*. Current CSI students and alumni are invited to send short stories, poems, essays, videos, and images in literature, creative writing, sculpture, photography, painting, theater, dance, music performance, and the arts and humanities at CSI.

To submit to *SILO*, please head over to <https://www.csi.edu/silo/submission-form.aspx>. Back issues and other information can be found at <https://silo.csi.edu/>. Please email your questions to rmayer@csi.edu.

SERVICES FOR STUDENTS

CSI Library
Spring
Semester
Hours

January 16- May 10



CSI LIBRARY
Spring Semester Hours

MONDAY - THURSDAY
7:30 AM - 9 PM

FRIDAY
7:30 AM - 4 PM

SATURDAY
12 - 4 PM

SUNDAY - CLOSED

Monday-Thursday
7:30am-9:00pm

Friday
7:30am-4:00pm

Saturday
12:00pm-4:00pm

Closed Sundays

ABOUT US

Looking for something fun to do inside? CSI is the proud owner of one the largest campus-based rope courses in the world!

- Group sizes of 10 to 300
- 20 low elements
- 40 high elements up to 50 feet high!

Our experiential learning programs are custom designed to provide participants with fun and engaging experiences while in an emotionally and physically safe environment regardless of their age or physical ability. We can integrate 100+ games and initiatives along with low/high elements to provide a foundation for the transference of new skills into the workplace and daily living.

***FREE FOR CSI STUDENT CLUBS!**

LOOKING FOR *ADVENTURE?*

FIND IT AT CSI'S CHALLENGE COURSE!



Experience the exhilaration of being up to 50 feet off the ground in our ropes course on over 40 high elements or play around in our low course with 20 different obstacles that will challenge your physical and mental abilities!

**SCAN FOR
MORE INFO**



Every official CSI club and athletic program can participate in an indoor or outdoor challenge course event once a semester.

CONTACT US
CHALLENGECOURSE@CSI.
EDU 208-732-6696

In Person Tutoring

Where: Meyerhoeffer
Building Room 202
Sunday: 12:00-4:00PM
Monday-Thursday:
11:00AM-8:00PM
Friday: 11:00AM-4:00PM

In Person Math Lab Tutoring

Where: Shields Building
Room 207
Monday-Friday: 8:00AM-
4:00PM

Subject Areas

- Math
- Biology
- Chemistry
- Writing
- Business
- Allied Health and others!

TUTORING

\$2.00 VOUCHER & FREE TUTORING

IN-PERSON TUTORING

MANY SUBJECTS AVAILABLE

Where:

Meyerhoeffer Building
 2nd floor of the Library, Room 202

When:

Sunday: 12:00pm – 4:00pm
 Monday – Thursday: 11:00am – 8:00pm
 Friday – 11:00am – 4:00pm

ONLINE TUTORING

MANY SUBJECTS AVAILABLE

Drop-in or by Appointment

To Access Online Services:

1. Visit MyCSI
2. Select "Tutoring"
3. Select "Peer Tutoring Schedules or "Online Writing Lab (CSI OWL)"

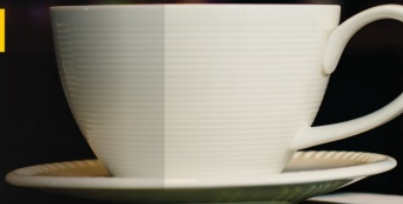
IN-PERSON MATH LAB

Where:

Shields Building, Room 207

When:

Monday–Friday: 8:00am–4:00pm



Sharpen Your Skills!

Contact Us: Moriah Leavitt, LTC Coordinator mleavitt2@csi 208-732-6686

Access Tutor
 Schedules Through
 MyCSI

Tutoring

RIDE

TFT



TWIN FALLS TRANSIT

RELIABLE

RIDE TFT hours of operation are:

6 a.m. - 9 p.m. Mon. - Fri.
7 a.m. to 9 p.m. Saturdays

\$3 Standard fare
\$1 60 and older or with disability

CONVENIENT

Download the convenient app and schedule your ride, see your wait time and drivers location, and more!

SAFE

RIDE TFT is available for individual riders as young as 12 to ride alone. Any age with an adult. Be assured that you and your loved ones are safe.

FAST

Pick up at your door and drop off at or near your desired location. It's better than a big bus, it's micro transit.

Ride TFT Twin Falls Transit

Ride TFT hours:
 Mon-Fri: 6 AM - 9 PM
 Sat: 7 AM - 9 PM

\$3 Standard fare

Call 208.974.7433 to
 schedule a ride.

+1 208-974-7433



Looking for Resources?

Check out the Student Support Services. Click on the MYCSI Tab at the top of the CSI homepage and then select Student Services or follow the link

[Student Support Services](#)



If you are a current student who could use food assistance please know that your request will be handled privately and confidentially. You are eligible for a food box twice a month.

Click on the link below to access the form.

[Gilbert's Pantry Form](#)

Gilbert's Pantry is located in the Student Affairs Office on the 2nd Floor of the Taylor Bldg.



We listen. We care. We help you learn skills for dealing with life.

Student Mental Health Services
Phone: (208) 732-6260

Located on the 2nd floor of the Taylor Building in the Center for Student Support and Connection.



College Of Southern Idaho
csieagles

Follow us on snapchat:

[csieagles](#)

To be in the know of the student events and to ask us any questions you have!

Check out the links below to get more information on services available for you.

[Food and Dining](#)

[Herrett Museum & Planetarium](#)

[Student Housing](#)

[Library](#)

Student Mental Health Services

Outdoor Recreation & Challenge Course

Student Accessibility Services

Recreation Center

Visit the CSI Event Calendar!

Student Activities



College of Southern Idaho | www.csi.edu



College of Southern Idaho | 315 Falls Ave., Twin Falls, ID 83301

[Unsubscribe mstark@csi.edu](mailto:mstark@csi.edu)

[Update Profile](#) | [Constant Contact Data Notice](#)

Sent by info@csi.edu powered by



Try email marketing for free today!