

NEWS AND UPDATES

Student Events & Activities Newsletter

April 21, 2025 | Volume 4: Issue 25

EVENTS

Student ID is required to attend events. Don't have a Student ID, please stop by Enrollment Services in the Taylor Building.



Dinner Party with the Nutrition & Wellness Club

Monday, April 21st
6:00-7:30 PM Location:
Entryway at CSI Rec Center

Join us to share recipes,
take recipes, and build your
own long-term meal plan!
Scan QR code on flyer to
attach your favorite recipes.

Community College Month Dress-up Days

Participate In the **Community College Month dress-up days** and send us a picture of your fit each day to be highlighted on Social Media

**Community College Month
DRESS-UP DAYS**



Throwback Tuesday

22 April
Wear your 60's fashion to celebrate CSI's 60th Anniversary

Black and Gold Wednesday

23 April
Show your Community College Pride by wearing Black and Gold

CSI Hat Thursday

24 April
Show off your style with your favorite CSI Hat



CSI Spirit Friday

25 April
Wear your favorite CSI Shirt

Send pictures to the CSI SnapChat @CSIEagles, Instagram @CollegeOfSouthernIdaho or to eagles@csi.edu.

We encourage participation to help showcase our Community College Spirit!

April 22nd - 25th

Tuesday, April 22nd: Wear your 60's fashion to celebrate CSI's 60th Anniversary.

Wednesday, April 23rd: Show your Community College pride by wearing black and gold!

Thursday, April 24th: Show off your style with your favorite CSI Hat.

Friday, April 25th: Wear your favorite CSI Shirt.

Send pictures to the CSI SnapChat @CSIEagles, Instagram @CollegeOfSouthernIdaho or to eagles@csi.edu.



COMMUNITY COLLEGE MONTH EAGLE HOUR

Tuesday, April 22nd
12:00 - 2:00 PM
Location: Upper SUB



JOIN US FOR SOME FUN CELEBRATING OUR COMMUNITY COLLEGE!!

- FREE SWAG
- TRIVIA AND GAMES
- PRIZES FOR 60'S FASHION
- FREE LUNCH



LIMITED SUPPLIES

Community College Month Eagle Hour

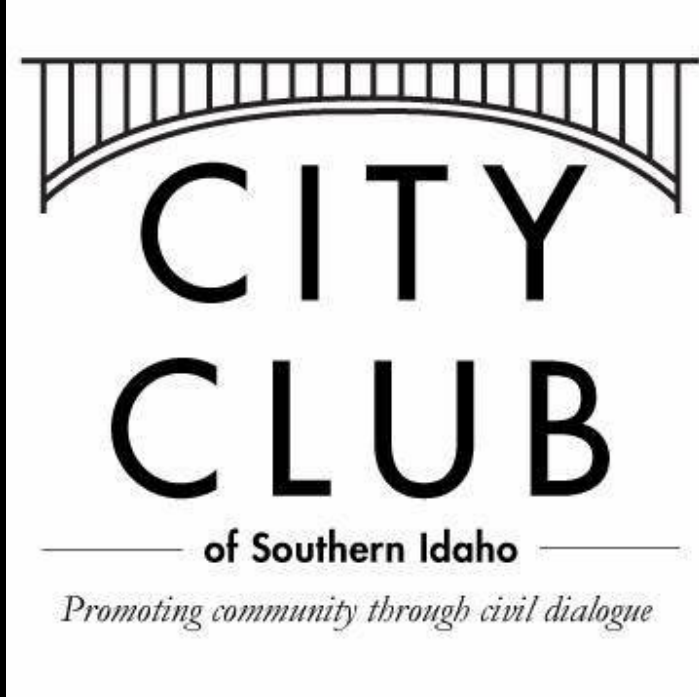
Tuesday, April 22nd
12:00 - 2:00 PM
Location: Upper SUB

Join us for some fun celebrating our community college! There will be swag, trivia and games, prizes for 60's fashion and free lunch!

Limited supplies

City Club Panel

Tuesday, April 22nd



7:00 - 8:30 PM

Location: Herrett Center
Rick Allen Room

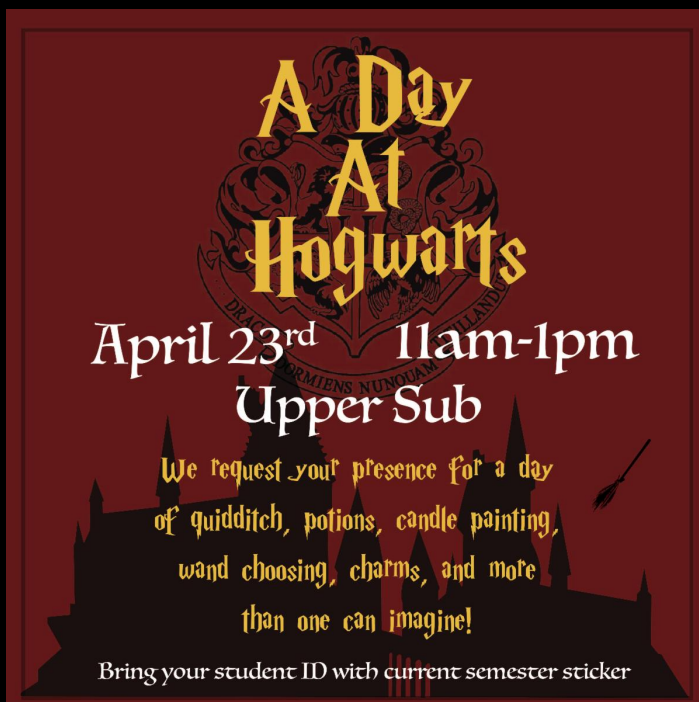
City Club of Southern Idaho will be hosting a panel focused on fentanyl and its impact on our society. A panel of speakers representing healthcare, social work, law enforcement, and the judiciary will discuss the crisis from their unique perspectives. The panel will also respond to audience questions.

A Day at Hogwarts

Wednesday, April 23rd
11:00 AM - 1:00 PM
Location: Upper SUB

We request your presence for a day of quidditch, potions, candle painting, wand choosing, charms, and more than one can imagine!

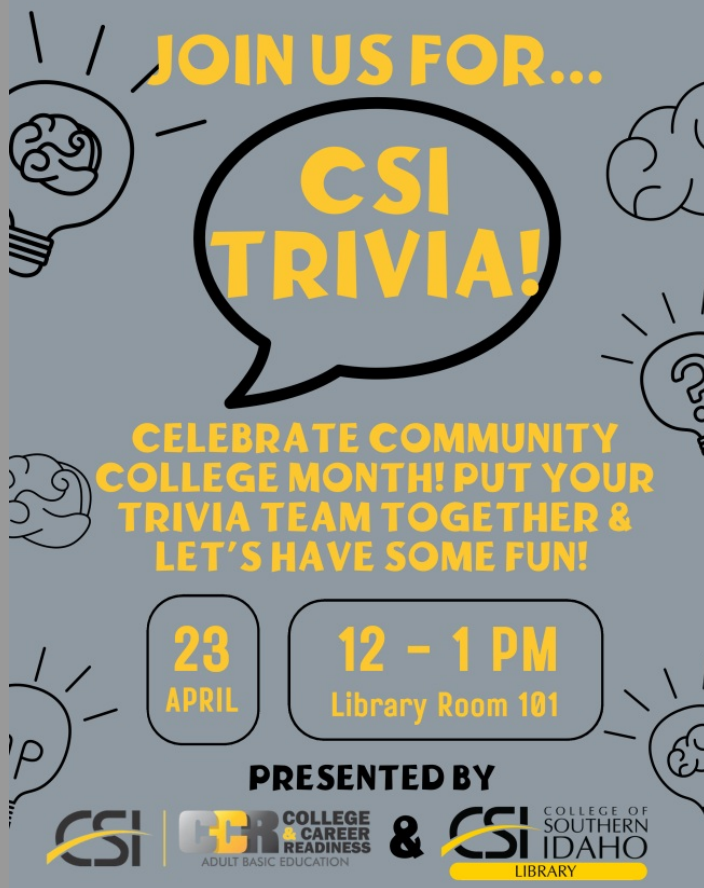
Bring your student ID




CSI Trivia

Wednesday, April 23rd
12:00 - 1:00 PM
Location: CSI Library, Room 101

Celebrate Community College Month with us! Put your trivia team together and let's have some fun!





EAGLES EMPOWER
SUPPORT GROUP

WHERE & WHEN
Student Union Building Southside 2nd floor
Wednesdays from 1:00 PM to 2:00 PM

CONTACT
Shannon Hyde • shyde@csi.edu
208.732.6268

ABOUT US

Eagles Empower Support Group is for students who identify with the need to build a campus support network with fellow students.

The group will provide opportunities for students to create more caring and equitable relationships with other students on campus.

ARE YOU INTERESTED?

- Sharing Your Story
- Encouraging Others
- Engaging in Service Opportunities
- Embracing Positivity

MISSION STATEMENT

Eagles helping each other become stronger, more confident, and more successful in our endeavors.

Eagles Empower Support Group

Wednesday, April 23rd
1:00 - 2:00 PM
Location: Taylor Room 233

Eagles Empower Support Group is for students who identify with the need to build a campus support network with fellow students. The group will provide opportunities for students to create more caring and equitable relationships with other students.

Contact: Shannon Hyde,
shyde@csi.edu

Resume Workshop



Free Drop-In Resume Workshops - Walk-in & Walk Out with a Better Resume!

No appointment necessary!

Join us April 23rd, April 30th, or May 7th
Time: 1pm - 3pm
WHERE: Applied Technology & Innovation Center Room #107

April 23rd, April 30th and May 7th
1:00 - 3:00 PM
Location: Applied Technology and Innovation Center Room #107

Free Drop-In Resume Workshops - Walk-in & Walk Out with a better resume!

CULTURALLY RELEVANT Career Readiness Workshops

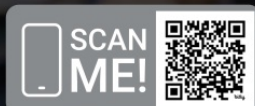
BECAUSE A CAREER SHOULD BE MORE THAN A PAYCHECK

Feeling pressure to start your career? Struggling to turn setbacks into strengths? Avoiding networking like the plague? You're NOT alone - and we've got the tools and strategies to help you navigate your career journey. Three sessions, three topics, three different days!

Topics:

- 💡 How to Overcome Imposter Syndrome - Manage self-doubt and understanding the impact of systemic barriers on self-worth
- 🔥 Turning Adversity into Career Strengths - Unlock your potential through the power of storytelling
- 💛 Demystifying Networking - Build authentic connections and attracting opportunities

REGISTER FOR ALL OR ONE OF THE SESSIONS!



OR REGISTER AT [BIT.LY/4HTCF4X](https://bit.ly/4HTCF4X).

For any questions please email Eduardo Reyes at EAREyes2@csi.edu.

DATES April 9th, 16th, 23rd
TIME 4:00 - 5:30 PM MST
WHERE Online via Zoom

GUEST SPEAKERS

Oscar Garcia & Angelica Garcia
Aspira Consulting



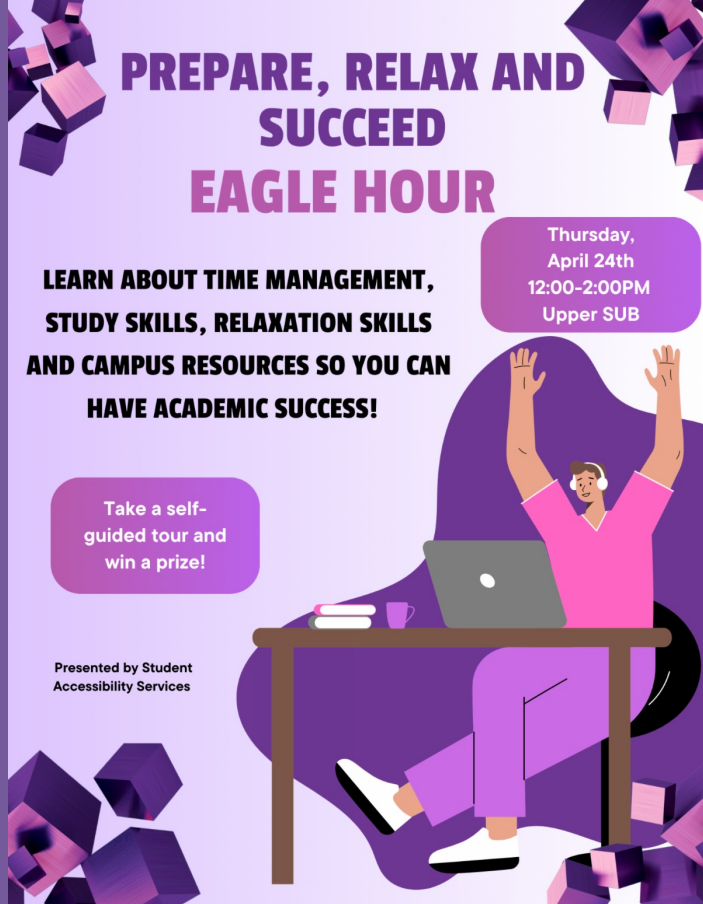
At Aspira Consulting, we understand the systemic barriers that prevent underserved, first-generation, low-income students from achieving their career aspirations. Our training model embraces students' multicultural backgrounds and views their lived experiences as an asset. By teaching students how to embrace their various identities, we recognize the importance of building students' self-confidence as they prepare to enter the workforce.

Culturally Relevant Career Readiness Workshops

April 23rd
4:00 - 5:30 PM
Location: Online Via Zoom

Feeling pressure to start your career? Struggling to turn setbacks into strengths? We got the tools and strategies to help you navigate your career journey. Three sessions, three topics, three different days! To register contact Eduardo Reyes at eareyes2@csi.edu.

Prepare, Relax and Succeed



Eagle Hour

Thursday, April 24th
12:00 - 2:00 PM
Location: Upper SUB

Learn about time management, study skills, relaxation skills and campus resources so you can have academic success! Take a self-guided tour and win a prize!



Library Book Club

Thursday, April 24th
12:00 - 1:00 PM
Location: CSI Library

March's book club pick is Remarkably Bright Creatures by Shelby Van Pelt. Copies are available at the CSI Library. Don't forget to join us for the discussion.

Welcome to the
Flock
Social Group



Thursday, April 24th

5:30 - 7:30 PM

Location: Upper SUB

Feeling like the odd eagle out? Come hang out with us!
Games, crafts and friends!
Social group meetings every Thursday.



Spring Variety Showcase

Thursday, April 24th

Doors open at 7:00 PM

Location: Fine Arts Auditorium

Delta Psi presents the 2025 Spring Variety Showcase!

Free Admission
Donations are welcome

Leaders


Tuesday, April 29th
2:00 - 3:00 PM
Location: Taylor 277

AAWCC Presents Learning with Leaders. Mayor, Ruth Pierce and CSI President Dean Fisher will be speaking. There will be lively discussions, local topics and light refreshments.


AAWCC PRESENTS

Learning with Leaders

Tuesday, April 29, 2025
2:00 - 3:00 pm
Taylor 277



RUTH PIERCE,
MAYOR,
TWIN FALLS,
IDAHO



DEAN FISHER,
PRESIDENT,
COLLEGE OF
SOUTHERN IDAHO

Lively discussion * Local topics * Light refreshments

American Hero

April 30th - May 3rd
Show begins at 7:30 PM

Come and watch the play, American Hero. General admission is \$10 and free to faculty, students and staff. This show is 16+ for strong language and mature themes.

Click [here](#) to get tickets.

Student Activities APPROVED
April 10, 2025
REMOVE in 20 days

CSI ARTS & HUMANITIES PRESENTS

This show is 16+
For Strong Language
Mature Themes

AMERICAN HERO

DIRECTED BY BURCU SEYBEN
ARTWORK BY ANGELA BATCHELOR

AMERICAN HERO BY BESS WOHL

APRIL 30 - MAY 3
2025

General Admission: \$10
Free for CSI Faculty, Students, and staff!

SCAN FOR TICKETS

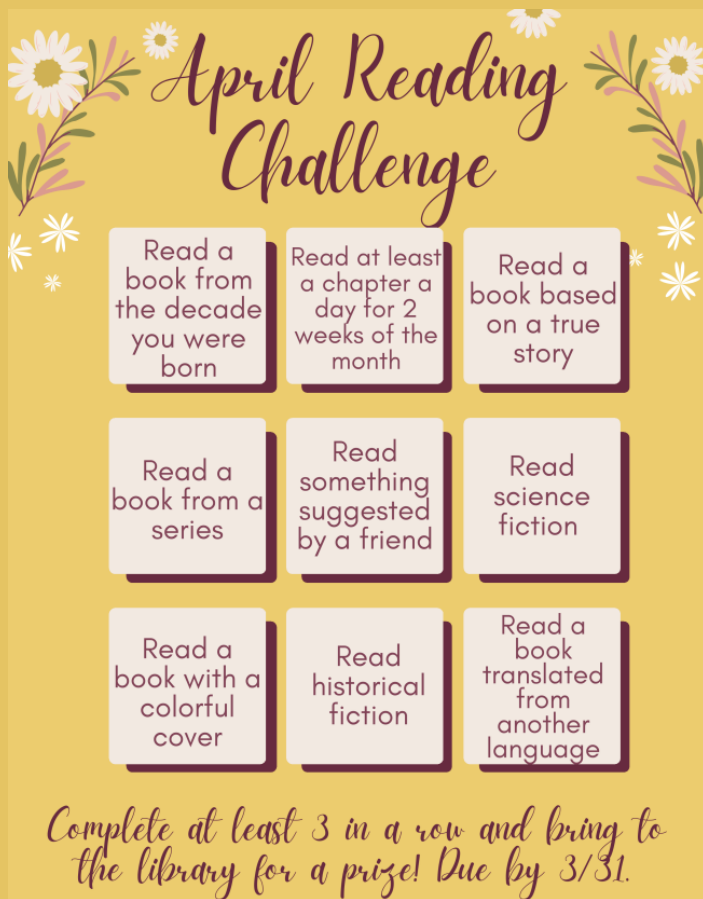
Mariachi Music



Are you interested in Mariachi Music? Do you play the violin, guitar, vihuela, bass, trumpet, flute or do vocals? Come and audition in the Fine Arts Building.

Contact Jenessy Garcia at jenessygarcia1278@gmail.com to get information on audition times.

No experience required! We'll train you!



Library Reading Challenge

Complete 3 boxes to win a prize at the CSI Library! Bring your completed April Reading Challenge to the library by April 30th.

FINANCIAL OPPORTUNITIES

Paid Survey for Students with Disabilities

Boise State University is conducting a research study about the experiences of current Idaho college students with disabilities at public colleges and

universities.



Participants will complete an online questionnaire composed of six open-ended questions that will take 7-20 minutes to complete. Participants who complete the questionnaire will have the choice to opt-in to a raffle for a \$10 gift card.

Participants who volunteer and are selected for the focus group will receive an additional \$25 gift card. By participating in the study, students will be able to share their experiences and potentially inform programs, practices, and policies that impact students with disabilities. For students who participate in the focus group, students may be able to find connection through sharing experiences with peers in their regions.

If you meet the requirements and would like to participate, please complete the questionnaire using this link

[Here](#)

A photograph of a young child with short brown hair, wearing a blue long-sleeved shirt and grey pants, is crouched on a light-colored floor. The child is focused on playing with several colorful toys, including a red ring stacker and a yellow ring stacker. The background is a bright, out-of-focus indoor setting.

YOU MAY BE ELIGIBLE FOR A CCAMPIS CHILD CARE SCHOLARSHIP

DO YOU NEED CHILD CARE ASSISTANCE?

- Do you have children under the age of 5?
- Are you a current student at CSI?
- Do you have a GPA of at least 2.0?

If so, you may be eligible for a CCAMPIS Child Care Scholarship.
Awards are made on a first come first serve basis with committee approval.



TO APPLY:

Visit www.csi.edu/financial-aid/scholarships/csi-scholarships.aspx
and click on CCAMPIS Child Care Scholarship

QUESTIONS? Contact:

Jayde Wilson • jwilson7@csi.edu | Clara Centeno • [cccenteno@csi.edu](mailto:ccenteno@csi.edu)
or talk to the Financial Aid Office

Do you have children under the age of 5? Are you a current student at CSI? Do you have a GPA of at least 2.0? If so, you may be eligible for a CCAMPIS Child Care Scholarship. Visit [here](#) to apply.

SERVICES FOR STUDENTS



CSI Library Spring Semester Hours

January 21- May 15

Monday-Thursday
7:30am-9:00pm

Friday
7:30am-4:00pm

Saturday
12:00pm-4:00pm

Closed Sundays

The graphic is split into two main sections. On the left, a black background contains the CSI logo (a stylized 'C' and 'S' in white and yellow) and the text 'COLLEGE OF SOUTHERN IDAHO' and 'CENTER FOR NEW DIRECTIONS'. Below this, the text 'ARE YOU A SINGLE PARENT OR DISPLACED HOMEMAKER?' is written in white. Further down, contact information is listed: 'EMAIL cnd@csi.edu', 'PHONE 208.732.6219', and 'WEBSITE csi.edu/center-for-new-directions'. On the right, a photograph shows a man with dark hair and a mustache, wearing an orange shirt, smiling and looking down at two young children. A girl with dark hair is on the left, and a boy with curly hair is on the right. The background of the photo is a soft-focus outdoor scene with green foliage.

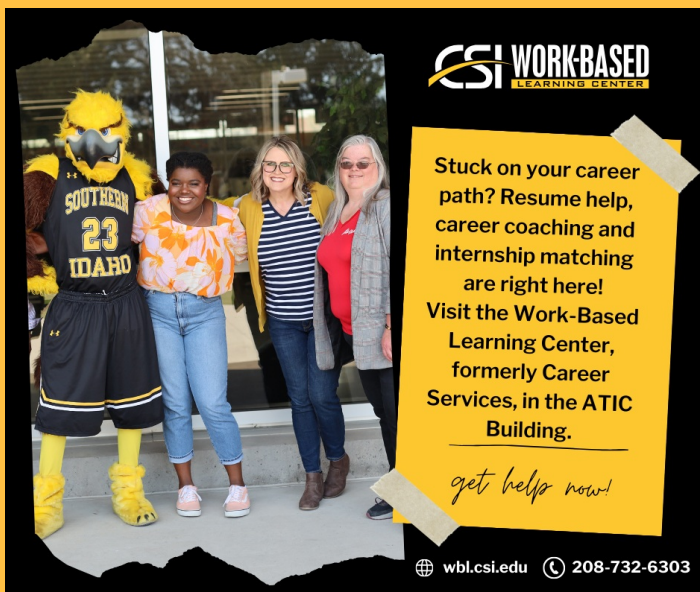
CSI COLLEGE OF SOUTHERN IDAHO
CENTER FOR NEW DIRECTIONS

ARE YOU A SINGLE PARENT OR DISPLACED HOMEMAKER?

EMAIL
cnd@csi.edu
PHONE
208.732.6219
WEBSITE
csi.edu/center-for-new-directions

Stronger careers, brighter futures—
CSI's Center for New Directions is here to support single parents and displaced homemakers on their journey to success!

CSI's Center for New Directions is here to support single parents and displaced homemakers on their journey to success! For information you can email cnd@csi.edu, call 208-732-6219, or visit the website [here](https://csi.edu/center-for-new-directions).



Work-Based Learning Center

If you're looking for career help, visit the Work-Based Learning Center! WBLC Manager Stefanie Hauff is available to help you find a job or internship or start charting your career path.

What we do:

- 1-on-1 meeting to identify a career path.
- Paid Internships
- Help with your resume, cover letters and LinkedIn account.
- Mock interviews
- Eagle Job Board is full of real, local job openings from trusted employers.
- Watch our video for more information - [Click Here](#)

Community

Ride TFT Twin Falls Transit

For current hours visit their website [here](#).

\$3 Standard fare

Call 208.974.7433 to schedule a ride.

RIDE

TFT



TWIN FALLS TRANSIT

RELIABLE

RIDE TFT hours of operation are:

6 a.m. - 9 p.m. Mon. - Fri.
7 a.m. to 9 p.m. Saturdays

\$3 Standard fare
\$1 60 and older or with disability

CONVENIENT

Download the convenient app and schedule your ride, see your wait time and drivers location, and more!

SAFE

RIDE TFT is available for individual riders as young as 12 to ride alone. Any age with an adult. Be assured that you and your loved ones are safe.

FAST

Pick up at your door and drop off at or near your desired location. It's better than a big bus, it's micro transit.

+1 208-974-7433



Looking for Resources?

Check out the Student Support Services. Click on the MYCSI Tab at the top of the CSI homepage and then select Student Services or follow the link

[Student Support Services](#)



If you are a current student who could use food assistance please know that your request will be handled privately and confidentially. You are eligible for a food box twice a month.

Click on the link below to access the form.

Gilbert's Pantry Form

Gilbert's Pantry is located in the Student Affairs Office on the 2nd Floor of the Taylor Bldg.

We listen. We care. We help you learn skills for dealing with life.

Student Mental Health Services
Phone: (208) 732-6260



Located on the 2nd floor of the Taylor Building in the Center for Student Support and Connection.



College Of Southern Idaho
csieagles

Follow us on snapchat:

csieagles

To be in the know of the student events and to ask us any questions you have!

Check out the links below to get more information on services available for you.

[Food and Dining](#)

[Herrett Museum & Planetarium](#)

[Student Housing](#)

[Library](#)

[Student Mental Health Services](#)

[Outdoor Recreation & Challenge Course](#)

[Student Accessibility Services](#)

[Recreation Center](#)

[Visit the CSI Event Calendar!](#)

[Student Activities](#)



College of Southern Idaho | www.csi.edu



College of Southern Idaho | 315 Falls Ave. | Twin Falls, ID 83301 US

[Unsubscribe](#) | [Update Profile](#) | [Constant Contact Data Notice](#)



Try email marketing for free today!