



NEWS AND UPDATES

Student Events & Activities Newsletter

April 13, 2026 | Volume 5: Issue 24

EVENTS

Student ID/Event Pass is required to attend events. Don't have a Student ID, please stop by Enrollment Services in the Taylor Building.

EAGLE LEADS BOOK DRIVE

HELP US MAKE A DIFFERENCE!



**DONATE GENTLY USED
OR NEW BOOKS**



**DROP THEM OFF AT DONATION
BOXES AROUND CAMPUS**



**YOU CAN ALSO BRING DONATIONS
DIRECTLY TO STUDENT AFFAIRS**



**DONATION DATES:
APRIL 13 – APRIL 27**

**Every book counts—help us give
stories a new home!**

Eagle Leads Book Drive

Donation Dates: April 13th-
27th

Eagle Leads is hosting a Book Drive and we need your support! Donate gently used or new books. Drop them off at donation boxes around campus. You can also bring donations directly to the Student Affairs Office, Taylor 235. Every book counts. Help us give stories a new home!



GET CRAFTY AT THE LIBRARY

GRAB A FRIEND AND COME
GET CRAFTY WITH US!
DROP IN & MAKE YOUR OWN
FELT NAME BANNER!



DROP IN BETWEEN 10AM AND 4PM ON
TUESDAY, APRIL 14TH



Get Crafty at the Library

Thursday, April 14th
10:00 AM - 4:00 PM
Location: CSI Library

Grab a friend and come get crafty with us! Drop in and make your own felt name banner. Drop in between 10:00 AM and 4:00 PM.



Float and Fuel Eagle Hour

Tuesday, April 14th
12:00 PM - 2:00 PM
Location: Upper SUB

Build your own trail mix plus enjoy a classic root beer float with the Bridge to Success!

Puzzles & Pretzels

Enjoy Snacks
Solve puzzles
Win Prizes

April 14th
3-5pm
Upper SUB

MUST HAVE STUDENT EVENT PASS

Puzzles & Pretzels

Tuesday, April 14th
3:00 PM - 5:00 PM
Location: Upper SUB

Enjoy snacks, solve puzzles,
and win prizes!

Must have student event
pass!



Eagle Hour

STUDENT DISABILITY AWARENESS

Thursday, April 16th
12:00-2:00 PM
Location: Upper SUB

LEARN YOUR NAME IN ASL AND
BRAILLE, PLAY BRAILLE UNO,
MEET OUR EMOTIONAL SUPPORT
ROBOT CAT, AND EXPLORE
DISABILITY AND CAMPUS
SUPPORT SERVICES.



Student Disability Awareness Eagle Hour

Thursday, April 16th
12:00 PM - 2:00 PM
Location: Upper SUB

Come learn your name in
ASL and Braille, play braille
Uno, meet our emotional
support robot cat, and
explore disability and
campus support services.

Music Bingo in the Library

Thursday, April 22nd
12:00 PM - 1:00 PM
Location: CSI Library

Get ready to test your tunes knowledge at Music Bingo! Instead of numbers, we're playing your favorite songs.



A purple-themed poster for a Music Bingo event. At the top, a golden bingo ball cage is surrounded by floating white balls with numbers (2, 4, 7, 9) and musical notes. The text 'MUSIC BINGO' is written in large, bold, white letters. Below it, the date '4/22/2026' is in a yellow oval. A yellow banner at the bottom says 'IN THE LIBRARY' and '12:00 TO 1:00'. A small cassette tape icon is also present.

MUSIC BINGO

4/22/2026

Get ready to test your tunes knowledge at Music Bingo! Instead of numbers, we're playing your favorite songs.

IN THE LIBRARY

12:00 TO 1:00

Pickleball Tournament

Saturday, April 25th
Check-In starts at 9:00 AM
Event starts at 10:00 AM
Location: Frontier Park
Pickleball Courts

Beginner and intermediate mixed gender brackets. \$45 per person. All proceeds go to CSI Women's Soccer. Register early - space is limited. Prizes!

For more information click [here.](#)



A dark grey poster for a Pickleball Tournament. It features a large pickleball paddle in the center with the CSI Soccer Pickleball Fundraiser logo. Text includes 'CSI WOMEN'S SOCCER PICKLEBALL TOURNAMENT', 'APRIL 25TH', 'CHECK-IN STARTS 9AM', 'EVENT STARTS 10 AM', 'PRIZES', '\$45 PER PERSON', 'REGISTER EARLY - SPACE IS LIMITED', 'BEGINNER AND INTERMEDIATE MIXED GENDER BRACKETS', 'FRONTIER PARK PICKLEBALL COURTS', and 'ALL PROCEEDS GO TO CSI WOMEN'S SOCCER'. A QR code is also present.

CSI WOMEN'S SOCCER

PICKLEBALL TOURNAMENT

APRIL 25TH

CHECK-IN STARTS 9AM
EVENT STARTS 10 AM

PRIZES

\$45 PER PERSON

REGISTER EARLY - SPACE IS LIMITED

BEGINNER AND INTERMEDIATE MIXED GENDER BRACKETS

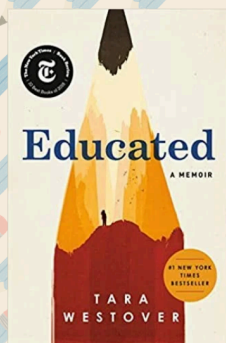
FRONTIER PARK PICKLEBALL COURTS

MORE INFORMATION
[HTTPS://SWISHTOURNAMENTS.COM/](https://swishtournaments.com/)

ALL PROCEEDS GO TO CSI WOMEN'S SOCCER

The CSI Library's April
Book Club Pick is ...

Educated
by
Tara
Westover



Join us on April 30th at
noon to discuss!

CSI Library Book Club

Thursday, April 30th
12:00 PM
Location: CSI Library

This month's pick is
"Educated by Tara
Westover. Books are
available to check out at the
library.

Financial Opportunities

TAKE 3
ON US!
If you sign up for 6 or more
credits this summer!

TO QUALIFY
Meet with your advisor

CSI
COLLEGE OF
SOUTHERN
IDAHO

Take 3 on Us

Planning on taking 6 credits
this summer? You may be
eligible for 3 credits on us!
Meet with your advisor or
enrollment specialist to see
if you qualify for the
Presidential Summer
Scholarship.

Click [here](#) to find your
advisor.

SERVICES FOR STUDENTS

CSI LIBRARY

Spring Semester Hours

MONDAY - THURSDAY
7:30 AM - 9 PM

FRIDAY
7:30 AM - 4 PM

SATURDAY
12 - 4 PM

SUNDAY - CLOSED

CSI Library Fall Semester Hours

January 20th - May 14th

Monday-Thursday
7:30am-9:00pm

Friday
7:30am-4:00pm

Saturday
12:00pm-4:00pm

Closed Sundays

IN THE GAME OF LIFE...

IF
 Loneliness + Social = Health

POWER UP
EVERY THURSDAY 5:30-7:30 AT THE TAYLOR CAFE
LOOK FOR THE TABLE WITH THE BAG OF GAMES

KATE SIMONDS
 KESIMONDS@CSI.EDU

In the Game of Life Support Group

Thursdays
5:30 PM - 7:30 PM
Location: Taylor Cafe

Feeling lonely and need a social boost? Join Counseling Services for a weekly support group. Look for the table with the bag of games in the Taylor Cafe. If you have questions email Kate Simonds at kesimonds@csi.edu.



ARE YOU A SINGLE PARENT OR DISPLACED HOMEMAKER?

EMAIL

cnd@csi.edu

PHONE

208.732.6219

WEBSITE

csi.edu/center-for-new-directions



Stronger careers, brighter futures—
CSI's Center for New Directions is here to support single parents and displaced homemakers on their journey to success!

CSI's Center for New Directions is here to support single parents and displaced homemakers on their journey to success! For information you can email cnd@csi.edu, call 208-732-6219, or visit the website [here](#).

CSI WORK-BASED LEARNING CENTER

Stuck on your career path? Resume help, career coaching and internship matching are right here! Visit the Work-Based Learning Center, formerly Career Services, in the ATIC Building.

get help now!

wbl.csi.edu 208-732-6303

Work-Based Learning Center

If you're looking for career help, visit the Work-Based Learning Center! WBLC Manager Stefanie Hauff is available to help you find a job or internship or start charting your career path.

What we do:

- 1-on-1 meeting to identify a career path.
- Paid Internships
- Help with your resume, cover letters and LinkedIn account.
- Mock interviews
- Eagle Job Board is full of real, local job openings from trusted employers.
- Watch our video for more information - [Click Here](#)

CSI DIAPER CLOSET

Support for Student Parents

Our diaper closet offers free diapers, wipes, and nursing pads for college students in need, providing essential supplies to support your family. *While supplies last*



Donations Accepted

Want to donate to the diaper closet? Every little bit helps! Contact the CND if you'd like to help keep the diaper closet going.

We're Here to Support You!

To request items from the diaper closet, please email cnd@csi.edu or call 208-732-6219



CONTACT US
cnd@csi.edu
csi.edu/center-for-new-directions
315 Falls Avenue, Twin Falls
208-732-6219

CSI Diaper Closet

Support for student parents. Our diaper closet offers free diapers, wipes, and nursing pads for college students in need, providing essential supplies to support your family. While supplies last.

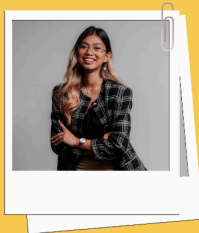
Want to donate to the diaper closet? Every little bit helps! Contact the CND if you'd like to help keep the diaper closet going.

To request items from the diaper closet, please email cnd@csi.edu or call 208-732-6219.

Visit our website [here](#).



IS EXCITED TO OFFER:



GILBERT'S INTERVIEW CLOSET

Are you headed to a job interview, internship, career fair, or networking event? Don't stress about what to wear - we've got you covered. Let us help you show up with confidence!

Free Professional Clothing for CSI Students!

AVAILABLE AT THE WORK-BASED LEARNING CENTER



Blazers

Dress Shirts

Blouses

Pants

Shoes

FREE TO KEEP!

STOP BY DURING OFFICE HOURS OR SCHEDULE AN APPOINTMENT HERE!

Questions?

Visit the Work-Based Learning Center Or call us at 208-732-6303. We are located in the Applied Technology & Innovation Center, Building #500.



www.wbl.csi.edu | 208-732-6303 | wblc@csi.edu

Gilbert's Interview Closet

Are you headed to a job interview, internship, career fair, or networking event? Don't stress about what to wear - we've got you covered. Let us help you show up with confidence! Stop by the Work-Based Learning Center during office hours to schedule an appointment. The Work-Based Learning Center is located in the Applied Technology and Innovation Center. You can also call 208-732-6303 or email wblc@csi.edu.

Looking for Resources?

Check out the Student Support Services. Click on the MYCSI Tab at the top of the CSI homepage and then select Student Services or



If you are a current student who could use food assistance please know that your request will be handled privately and confidentially. You are eligible for a food box twice a month. Click on the link below to access the form.

Gilbert's Pantry Form

Gilbert's Pantry is located in the Student Affairs Office on the 2nd Floor of the Taylor Bldg.



We listen. We care. We help you learn skills for dealing with life.

Student Mental Health Services
Phone: (208) 732-6260

Located on the 2nd floor of the Taylor Building in the Center for Student Support and Connection.



College Of Southern Idaho
csieagles

Follow us on snapchat:

csieagles

To be in the know of the student events and to ask us any questions you have!

Check out the links below to get more information on services available for you.

Food and Dining

Herrett Museum & Planetarium

Student Housing

Library

Student Mental Health Services

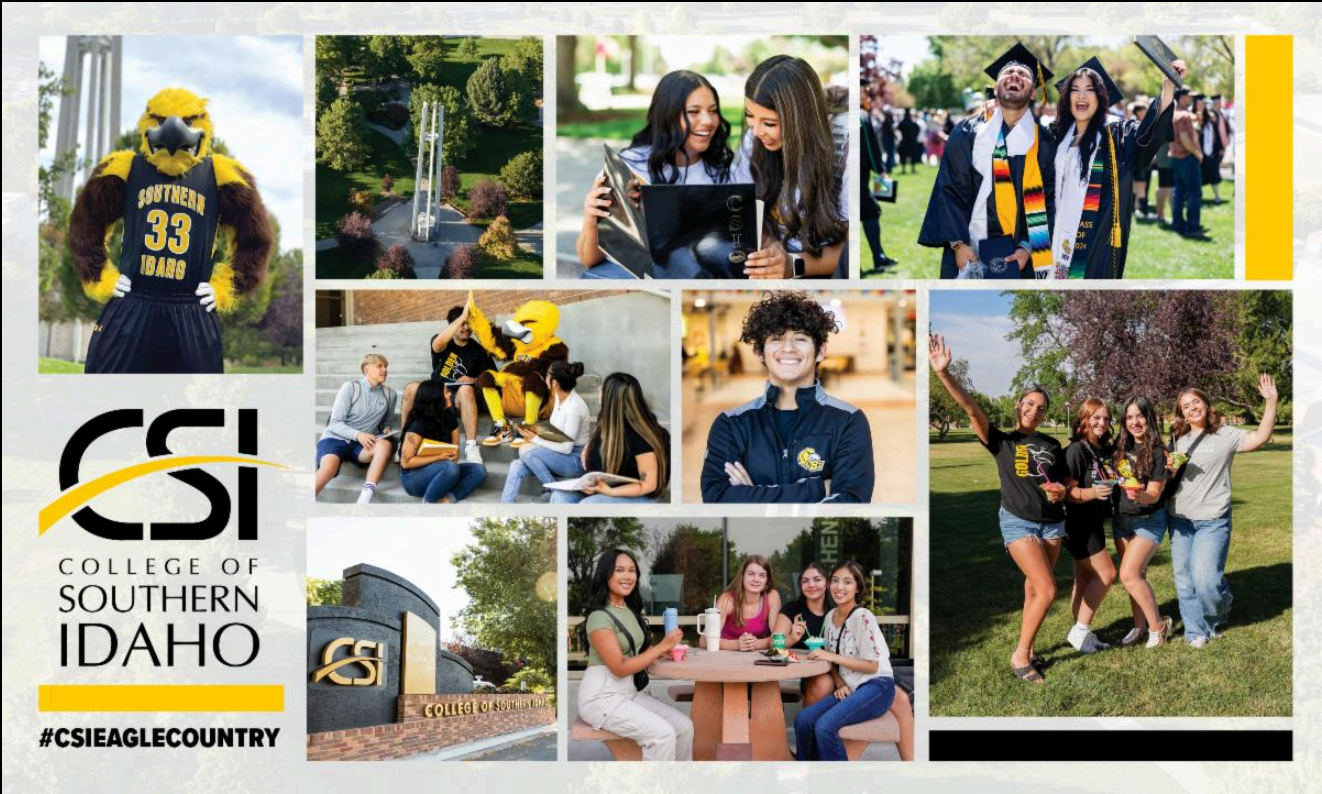
Outdoor Recreation & Challenge Course

Student Accessibility Services

Recreation Center

Visit the CSI Event Calendar!

Student Activities



College of Southern Idaho | www.csi.edu



College of Southern Idaho | 315 Falls Ave. | Twin Falls, ID 83301 US

[Unsubscribe](#) | [Update Profile](#) | [Constant Contact Data Notice](#)



Try email marketing for free today!