

## Student Events & Activities Newsletter

November 14, 2022 | Volume 2: Issue 13

# NEWS AND UPDATES

## REMINDER- CSI College Health Assessment!

CSI Students, we want your feedback!

Please take the time to fill it out and help us create programming and support services for you! All students who submit a survey will be automatically entered in a random drawing for one of (20) \$20 gift cards for the CSI Bookstore.

**CSI STUDENTS!**

**WE WANT YOUR FEEDBACK!**

The CSI College Health Assessment will be arriving in your email soon. Please take time to let us know:

- ✓ How you're doing
- ✓ What you think
- ✓ How we can help you

All students who submit a survey will be automatically entered in a random drawing for one of (20) \$20 gift cards for the CSI Bookstore!

**CSI** COLLEGE OF  
SOUTHERN  
IDAHO  
OFFICE OF STUDENT AFFAIRS

## CSI NUTRITION FOOD DRIVE

11/2-11/18

Annual food  
drive for

## Gilbert's Pantry

You can bring a bag with your non-expired donations to Gilbert's Pantry Taylor 235.

# CSI NUTRITION CLUB FOOD DRIVE

NOVEMBER 2 - NOVEMBER 18, 2022

CSI NUTRITION CLUB IS HOLDING THEIR ANNUAL FOOD DRIVE TO BENEFIT GILBERT'S PANTRY.

• ITEMS IN HIGH DEMAND:

- Soup
- Canned Fruit
- Sugar
- Cooking Oil
- Jam/Jelly
- Peanut Butter
- Dry Beans
- Instant Potatoes/Pasta
- Juice
- Dish Soap
- Laundry Detergent

*Thank you!*



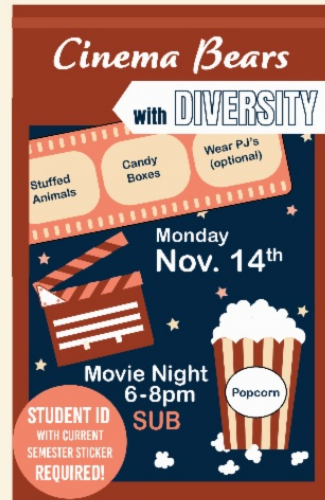
PLEASE FILL THIS BAG WITH YOUR NON-EXPIRED DONATIONS. YOU CAN BRING THIS BAG DIRECTLY TO GILBERT'S PANTRY, TAB #235, OR LEAVE IT BY YOUR DOOR AND A CSI NUTRITION CLUB MEMBER WILL PICK IT UP BY 11/18/22.



## UPCOMING EVENTS

# PROGRAMMING WEEK

NOV 14 - 16



COME SEE ALL  
THE GREAT  
EVENTS EACH  
COUNCIL  
HAS FOR YOU!



## Programming Week Nov 14-16

Monday November 14th Color Rush

2:00pm-5:00pm in the SUB

Scratch Art, Balloon Artist, Kona Ice, Twister, Tie-Die

Monday November 14th Cinema Bears with Diversity

6:00pm-8:00pm in the SUB

Stuffed Animals, Candy Boxes, Wear PJ's



## Tuesday November 15th Cozy Kits with Program Board

3:00pm-5:00pm in the SUB

Get ready for your Thanksgiving break and create a cozy kit! Blankets, Sock Slippers, Tumblers, Hot Cocoa and more.

## Wednesday November 16th Eagle Fall Fest with Senate

11:00am-1:00pm in the SUB

Question Booth, Earn Raffle Tickets for bid prize baskets, Hot cocoa bar, glazed donuts

## Wednesday November 16th DIY CSI with Eagle Leads

7:00pm-9:00pm in the SUB

Decorate and Customize CSI Gear (Crossbody Bag or Crewneck) with Patches and enjoy some pizza and board games.

## Bowling at Bowladrome Night!

Wednesday, Nov 16th

10:30pm-12:30am

Located at  
220 Eastland Dr

Student ID is required with FALL  
2022 stickers



## ATHLETICS CORNER

Show your team spirit below by signing up for alerts and never miss a game:

- [Signup for the e-newsletter](#)
- [Get text updates](#)
- [Never miss a game using the Game Webstream](#)
- [Stay up to date with live stats](#)

See More Athletic Events!



# SERVICES FOR STUDENTS

## Looking for Resources?

Check out the Student Support Services. Click on the MYCSI Tab at the top of the CSI homepage and then select Student Services or follow the link

[Student Support Services](#)



If you are a current student who could use food assistance please know that your request will be handled privately and confidentially. You are eligible for a food box twice a month.

Click on the link below to access the form.

### [Gilbert's Pantry Form](#)

Gilbert's Pantry is located in the Student Affairs Office on the 2nd Floor of the Taylor Bldg.



We listen. We care. We help you learn skills for dealing with life.

Student Mental Health Services  
Phone: (208) 732-6260

Located on the 2nd floor of the Taylor Building in the Center for Student Support and Connection.



College Of Southern Idaho  
csieagles

Follow us on snapchat:

**csieagles**

To be in the know of the student events and to ask us any questions you have!

Check out the links below to get more information on services available for you.

Food and Dining

Herrett Museum & Planetarium



Student Housing

Library

Student Mental Health Services

Outdoor Recreation & Challenge Course

Student Accessibility Services

Recreation Center

Visit the CSI Event Calendar!

Student Activities

## COMMUNITY RESOURCES



College of Southern Idaho | [www.csi.edu](http://www.csi.edu)



College of Southern Idaho | 315 Falls Ave., Twin Falls, ID 83301

[Unsubscribe mstark@csi.edu](mailto:mstark@csi.edu)

[Update Profile](#) | [Constant Contact Data Notice](#)

Sent by [info@csi.edu](mailto:info@csi.edu) powered by



Try email marketing for free today!

