

Student Events & Activities Newsletter

September 19, 2022 | Volume 2: Issue 5

NEWS AND UPDATES

CSI BRIDGE TO SUCCESS



The Bridge to Success has become my second family and Rosey has become a sister when you are backed into a corner she champions for your success! The Bridge to Success has empowered and guided my success not only financially but by helping build a supportive family in which we grow and enter our majors with confidence."

- A former Bridge to Success student

Benefits of joining Bridge to Success:

- Scholarship opportunities
- Connect with friends, staff, and faculty
- Financial assistance with books and supplies
- Develop learning and study skills
- Learn more about campus resources

SCAN
HERE: ➡



The program is designed for students who:

Are planning to graduate at CSI
Want to network with peers, faculty, and staff

AND

Are GED graduates

OR

Are high school graduates with a GPA of 3.1 or below

OR

Are first generation students (neither parent earned a degree)

For more information or to become a member of the program, scan the QR code to visit our website.

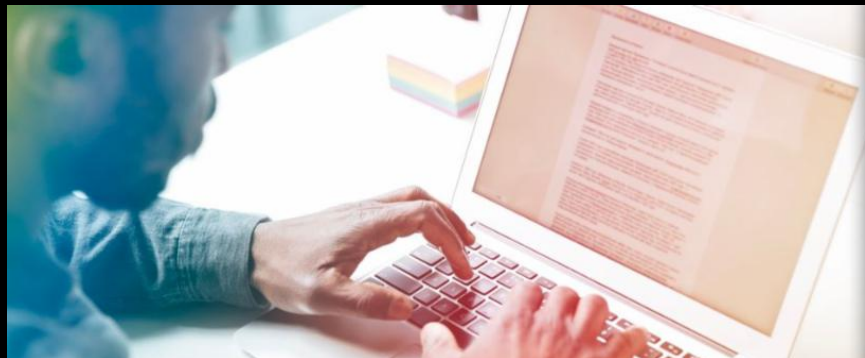
Join Bridge
to Success!

For more
information
please click
on the link
below!

[Bridge to
Success](https://www.csi.edu/bridge-to-success)



www.csi.edu/bridge-to-success • 208.732.6444



STUDENT ESSAY CONTEST

NISOD invites students at NISOD-member colleges to participate in the Scott Wright Student Essay Contest!

Students* describe in a 500-word (or less) essay a faculty member, staff member, or administrator who encouraged them to complete a course, finish a semester, or graduate from college and how that encouragement helped them reach their goal(s).

*Only students currently enrolled at NISOD member colleges are eligible.

The Prize

Three (3) winning student authors and the faculty members, staff members, or administrators featured in the winning essays will each receive:
\$1,000 USD

Travel to the International Conference on Teaching and Leadership Excellence (May 27-30 in Austin, Texas), which includes:

- Up to \$400 USD toward travel to Austin, Texas;
- Up to three (3) nights lodging (Saturday, Sunday, Monday nights only);
- One (1) complimentary conference registration.

(Note: Winning authors will read their essays on stage during the conference's Excellence Awards Dinner and Celebration on Sunday, May 28.)

In addition, each winning student author's college will receive a complimentary one-year NISOD membership.

Timeline

Contest opens: August 19, 2022

Submission deadline: March 3, 2023

Winners notified: March 24, 2023

Winner acceptance due: March 31, 2023

Winners' photos due: April 7, 2023

Prize and essay presentations at NISOD conference: May 28, 2023

Evaluation Criteria

Submissions will be evaluated based on the following criteria: Content, originality, clarity, organization, conciseness, and grammar.

[SUBMIT NISOD ESSAY HERE!](#)

CSI CHILDCARE SCHOLARSHIP NOW OPEN

**SCAN
TO LEARN MORE**



CSI.EDU/FINANCIAL-AID/SCHOLARSHIPS

Childcare Scholarship

NOW OPEN
through
OCTOBER 15

[Childcare
Scholarship](#)

Want to be notified of the events and activities we have goin on?
Signup for notifications on the CSI APP!

Open the CSI APP, Click on the middle icon on the bottom of your
app screen, click on the left menu icon, select find a channel then
choose activities and athletics.

Get Notifications of Events and Activities on the CSI App

How to Join the Channel-
Step by Step




UPCOMING EVENTS

Totes & Votes

Tuesday, September 20TH
11am - 1pm In the SUB



FOOD!



Patches!

Program Board

Pins!

Student ID
with current semester sticker required!
Fall 2022

Join us for some pizza and punch!
 While you decorate your tote, learn how to register to vote!

Eagle Hour

Totes & Votes

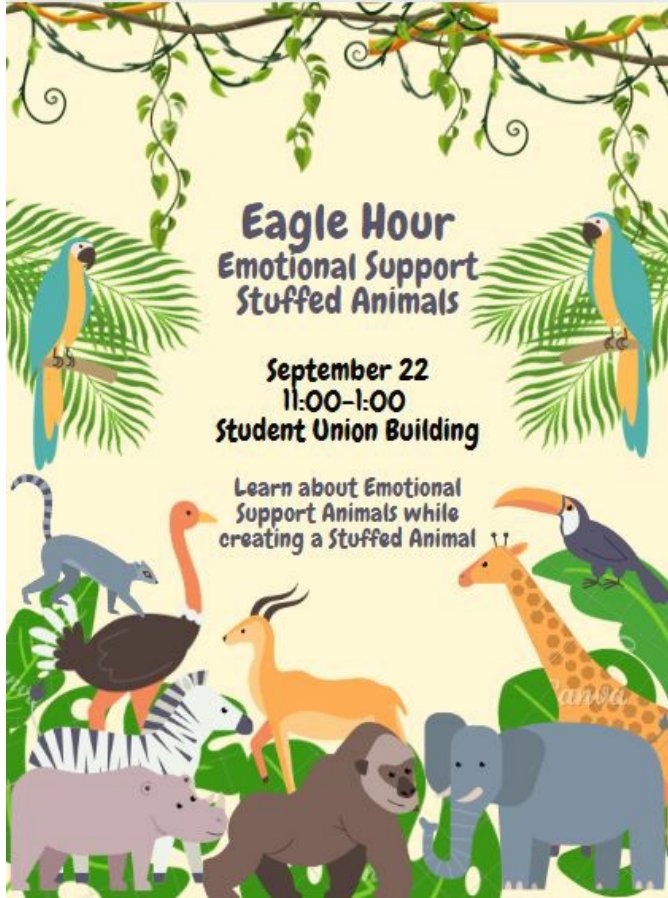
Tuesday
September 20th
11am-1pm

Join us for some
pizza and punch!

While you
decorate your
tote, learn how
to register to
vote!

Eagle Hour

Emotional Support
Stuffed Animals



September 22
11:00-1:00
Student Union Building

Come learn about
Emotional Support
Animals while
creating a Stuffed
Animal

*CSI Students Only
w/FALL 2022 Sticker
on Student ID

THE WOMAN KING

Thursday
September 22th
@ Cinema 13

Doors open
7:15p.m
Movie Starts
7:30 p.m.

Tickets
available in the
Student Affairs
Office!
Must have FALL
2022 Stickers on
your CSI Student
ID!

CINEMA 13

THURSDAY
SEPTEMBER 22ND

TICKETS IN THE STUDENT AFFAIRS
OFFICE
CSI STUDENT ID W/ CURRENT
SEMESTER STICKER REQUIRED

MAX
1
GUEST

Program
Board

DOORS OPEN
7:15 PM

MOVIE STARTS
7:30 PM

THE
WOMAN
KING

BASED ON TRUE EVENTS

ATHLETICS CORNER

Show your team spirit below by signing up for alerts and never miss a game:

- [Signup for the e-newsletter](#)
- [Get text updates](#)
- [Never miss a game using the Game Webstream](#)
- [Stay up to date with live stats](#)

See More Athletic Events!



SERVICES FOR STUDENTS

Looking for Resources?

Check out the Student Support Services. Click on the MYCSI Tab at the top of the CSI homepage and then select Student Services or follow the link [Student Support Services](#)



If you are a current student who could use food assistance please know that your request will be handled privately and confidentially. You are eligible for a food box twice a month.

Click on the link below to access the form.

[Gilbert's Pantry Form](#)

Gilbert's Pantry is located in the Student Affairs Office on the 2nd Floor of the Taylor Bldg.



We listen. We care. We help you learn skills for dealing with life.

Student Mental Health Services
Phone: (208) 732-6260

Located on the 2nd floor of the Taylor Building in the Center for Student Support and Connection.



College Of Southern Idaho
csieagles

Follow us on snapchat:

csieagles

To be in the know of the student events and to ask us any questions you have!

Check out the links below to get more information on services available for you.

Food and Dining

Herrett Museum & Planetarium

Student Housing

Library

Student Mental Health Services

Outdoor Recreation & Challenge Course

Student Accessibility Services

Recreation Center

Visit the CSI Event Calendar!

Student Activities

COMMUNITY RESOURCES

Accepting New Patients!

OPEN MONDAY - SATURDAY

ACROSS THE STREET FROM CAMPUS ON FALLS AVENUE!

BACK IN BALANCE

CHIROPRACTIC & DRY NEEDLING, LLC

We want to make sure you're feeling your best so you can get it done in the classroom. School can be stressful, and that's why we're happy to offer CSI students a discounted cash rate
Only \$50 per visit!

Schedule Today:

- Call/Text: 208-254-5953
- backinbalancechiro.janeapp.com

We also accept health insurance!

BACK IN BALANCE

Chiropractic & Dry
Needling LLC

Student Special \$50
per visit

[Visit Website](#)



College of Southern Idaho | www.csi.edu



College of Southern Idaho | 315 Falls Ave., Twin Falls, ID 83301

[Unsubscribe mstark@csi.edu](mailto:mstark@csi.edu)

[Update Profile](#) | [Constant Contact Data Notice](#)

Sent by info@csi.edu powered by



Try email marketing for free today!