

NEWS AND UPDATES

Student Events & Activities Newsletter

December 4, 2023 | Volume 3: Issue 12

Join the CSI Peer Mentoring Program!



CSI PEER MENTORING

When you sign up for the CSI Peer Mentoring Program, you'll be matched with a mentor, a fellow CSI Student, Faculty or Staff, who can offer personalized support and assistance. This mentor can support you as you navigate your goals and challenges, as well as help you access resources that allow you to make the most of your year. You will also be encouraged to participate in the events and activities that we host to help create a sense of belonging and connection during your time at CSI.

[Join Now](#)

CSI Peer Mentoring

When you sign up for the CSI Peer Mentoring Program, you'll be matched with a mentor, a fellow CSI Student, Faculty or Staff, who can offer personalized support and assistance. This mentor can support you as you navigate your goals and challenges, as well as help you access resources that allow you to make the most of your year.

[Join Now](#)

EVENTS

Student ID with FALL 2023 sticker is required to attend events. Don't have the sticker, please stop by Enrollment Services in the Taylor Building.

Destress Before Finals

Monday, December 4th

DESTRESS BEFORE FINALS

TAKE A BREATHER AND COME LET YOUR MIND
DRIFT AWAY WHILE COLORING IN BEATIFUL
ASL ART.

MONDAY, DECEMBER 4TH

11:00 am to 1:00 pm
2nd Floor of the SUB

While you're here, grab a Clif Bar or two to munch on
between your final exams next week.



11:00AM-1:00PM

2nd Floor of the SUB

Take a breather and
let your mind drift
away while coloring a
beautiful ASL art and
getting a snack.

Eagle Hour at the Student Rec. Center!

TUESDAY,
DECEMBER 5TH



COME PLAY LIGHTNING WITH
US FOR A CHANCE TO WIN 1
OF 2, \$25 GIFT CARDS

Tuesday, December 5th
12:00 - 1:00 PM

Location: Student Rec Center

COME JOIN

Student Rec. Center Eagle Hour

Tuesday,
December 5th,
2023

12:00-1:00 PM

Location: The Student
Rec. Center

Come play Lightning
with us for a chance
to win 1 of 2, \$25
Gift Cards

DIVERSITY COUNCIL

Hanukkah

THURSDAY
DECEMBER 11 AM - 1 PM

LEARN MORE ABOUT THIS HOLIDAY'S HISTORY AND TRADITIONS BY ENJOYING DELICIOUS SUGGANIYOT (JELLY FILLED DONUT), DREIDEL PLAY, AND MORE!

EVERGREEN BUILDING

Hanukkah Eagle Hour

Thursday
December 7th,
2023
11:00-1:00 PM

Location: Evergreen Building

Learn more about this holiday's history and traditions by enjoying a delicious sufganiyot (jelly filled donut), dreidel play and more.

DIVERSITY COUNCIL

Hanukkah Game Night

THURSDAY
DECEMBER 5 - 7 PM

STOP BY FOR A FUN-FILLED EVENING WHERE WE'LL SPIN, LEARN, AND PLAY DREIDEL! A DELIGHTFUL WAY TO EMBRACE TRADITION, IGNITE FRIENDLY COMPETITION AND WIN PRIZES!

UPSTAIRS IN THE STUDENT UNION BUILDING

Hanukkah Game Night

Thursday,
December 7th

5:00pm-7:00pm

2nd Floor of the SUB

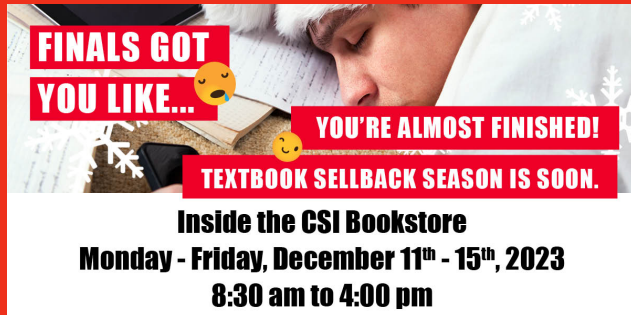
Stop by for a fun-filled evening where you will spin, learn and play dreidel and win prizes!



Bookstore Happy Holidays Sale!

December 4-21, 2023

20% off all clothing and novelty items.



Bookstore Textbook Sellback

Monday-Friday, December 11th-15th

8:00 AM - 4:00 PM



Every Necessary Care & Attention: George Washington & Medicine exhibit!

Check it out at the library through December 22nd.

Back by Popular Demand
The CSI Library Presents Trivia Night

Test Your Knowledge, Claim Your Glory!

Wednesday, December 13th

12:00 - 1:00 pm

At the CSI Library

Max 4 players per

BACK BY POPULAR DEMAND,
THE CSI LIBRARY PRESENTS...



Join us in the Library for some friendly competition and a chance to show off your random knowledge!

Grab some coworkers and create a team (max 4 players).

Open to all CSI Faculty and Staff.

Be there or be square!

Questions? Contact Allie Beard @ ext 6502 or abeard2@csi.edu

WEDNESDAY, DECEMBER 13, 2023

NOON - 1PM

**BRING YOUR OWN LUNCH. COFFEE,
TEA AND COOKIES PROVIDED!**

team. Bring your own lunch. Coffee, tea and cookies provided.



What Library Hours do you Need?

Is the library open early enough? Late enough?

Please take our 2 min. survey to give us your feedback.

Scan QR code in flyer.

Annual Welding Organization Fundraiser!

Enter the raffle to win a variety of beef, pork and chicken.

Annual CSI Welding Organization Fundraiser

Benefits Welding Student Competition Travel & Community Activities



Here's your chance to win a variety of Beef, Pork and/or Chicken!
2 Prizes Drawn

1st Prize: \$500 worth of meat

2nd Prize: \$300 worth of meat



Tickets: \$10 each or 3 for \$20

Drawing Date: December 7, 2023

CONTACT: Clay Wilkie cwilkie@csi.edu or 732-6372
or any

Welding Student Organization Member
(other non-meat options are available for drawing winners)

**Tickets: \$10 each or
3 for \$20**

**Drawing date is
December 7, 2023
Contact: Clay Wilkie
at 208-732-6372 or
email cwilkie@csi.edu**

**(non-meat options
are available)**



UPCOMING EVENTS

TWIN FALLS CAMPUS

FRIDAY, DECEMBER 08
FAFSA PREP
9 A.M. - 12 P.M.

SATURDAY, JANUARY 06
FAFSA HELP
9 A.M. - 12 P.M.

MINI CASSIA CENTER

FRIDAY, DECEMBER 01
9 A.M. - 12 P.M.

TUESDAY, JANUARY 09
4 P.M. - 7 P.M.

JEROME CENTER

THURSDAY, JANUARY 11
5 P.M. - 7 P.M.
RENEW COFFEE JEROME

APPLY

- GET ADVISED
- GET HELP WITH FINANCIAL AID
- CAMPUS TOURS
- CSI SWAG!

PRE-REGISTER
HERE



Instant Enrollment Upcoming Events

Get advised, help with financial aid, campus tours and CSI Swag!

Plan for your future...

CSI TRANSFER FAIR

JANUARY 31, 2024

TWIN FALLS CAMPUS

FINE ARTS LOBBY

11:00 AM - 2:00 PM

MINI-CASSIA CENTER

4:00 - 6:00 PM

FREE PIZZA, SWAG AND RAFFLE DRAWINGS!

Students who attend will be entered into a drawing for a chance to win a \$500 CSI Scholarship!



Regional four-year Colleges/Universities, Military, and Internship opportunities will be available to visit with students about the transfer process. Learn about academic programs, financial aid, scholarships, internships and housing.

The CSI Transfer Fair is coming up on January 31, 2024 here are the Twin Fall Campus from 11:00 AM - 2:00 PM in the Fine Arts Lobby and then from 4:00 - 6:00 PM at the Mini-Cassia Center. Free pizza, swag and a raffle drawing for a chance to win a \$500 CSI scholarship!

OPEN TO CURRENT AND NEW CSI STUDENTS

CSI GENERAL SCHOLARSHIP APPLICATION

MARCH 1, 2024

Priority Date for the
2024-2025 academic year

Apply now on your MyCSI:
→ Finances tile
→ Scholarships tile
→ CSI Scholarship application

REVIEW
departmental
scholarship
opportunities:



www.csi.edu/financial-aid/scholarships/csi-scholarships.aspx

IDAHO OPPORTUNITY SCHOLARSHIP

Applications and FAFSA are due
MARCH 1, 2024



boardofed.idaho.gov/scholarships/idaho-opportunity-scholarship



CSI
COLLEGE OF
SOUTHERN IDAHO

IDAHO
LAUNCH

APPLICATIONS DUE
APRIL 15
SCAN TO LEARN MORE



CSI General Scholarship Application

Applications and FAFSA due March 1, 2024 Primary Date for the 2024-2025 academic year.
Apply now on your MyCSI > Finances Tile > Scholarship tile > CSI Scholarship Application.



NextGen SCHOLARSHIP

SPRING 2024

Due December 14



Scan the QR Code to access the application or visit
csi.edu/agriculture-department/scholarships.aspx

**“How will your chosen field
of study benefit the ag, food, or
natural resource industries?”**



It is the policy of the College of Southern Idaho to provide equal educational and employment opportunities, services, and benefits to students and employees without regard to age, race, color, national origin, sex, religion, and/or disability, in accordance with the Title VI and Title VII of the Civil Rights Act of 1964, as amended, Title IX of the Educational Amendment of 1972, Age Discrimination Act of 1975, Section 504 of the Rehabilitation Act of 1973, Americans with Disabilities Act (ADA) of 1990, and all other applicable state and federal non-discrimination statutes. Appropriate consideration shall be given to veterans in accordance with applicable state and federal laws and regulations. CSI prohibits all forms of retaliation for filing complaints of illegal discrimination or harassment.
Compliance Officer:
Eric Nielson
CSI Human Resources Director
(208) 732-4247
*NextGen Scholarship awards are funded by a USDA NIFA grant, "From Learning to Leading: Cultivating the Next Generation of Diverse Food and Agriculture Professionals Program" (NextGen), awarded to the College of Southern Idaho that provides up to \$1,044,075 for financial assistance in these programs.

NextGen Scholarship

Spring 2024 applications are due December 14th!

How will your chosen field of student benefit the ag, food, or natural resource industries?

A young child with short brown hair, wearing a blue long-sleeved shirt and grey pants, is crouching on a light-colored floor. The child is focused on playing with colorful toys, including a red and orange stacking ring and a yellow and green stacking ring. In the background, there are more colorful toys and a white wall.

YOU MAY BE ELIGIBLE FOR A CCAMPIS CHILD CARE SCHOLARSHIP

DO YOU NEED CHILD CARE ASSISTANCE?

- Do you have children under the age of 5?
- Are you a current student at CSI?
- Do you have a GPA of at least 2.0?

If so, you may be eligible for a CCAMPIS Child Care Scholarship.
Awards are made on a first come first serve basis with committee approval.



TO APPLY:

Visit www.csi.edu/financial-aid/scholarships/csi-scholarships.aspx
and click on CCAMPIS Child Care Scholarship

QUESTIONS? Contact:

Jayde Wilson • jwilson7@csi.edu | Clara Centeno • [cccenteno@csi.edu](mailto:ccenteno@csi.edu)
or talk to the Financial Aid Office

CCAMPIS Child Care Scholarship

- Do you have children under the age of 5?
- Are you a current student at CSI?
- Do you have a GPA of at least 2.0?

If so, you may be eligible for a CCAMPIS Child Care Scholarship

THE ENGLISH DEPARTMENT IS TAKING SUBMISSIONS

The English Department of the College of Southern Idaho is taking submissions for its online journal, *SILO*. Current CSI students and alumni are invited to send short stories, poems, essays, videos, and images in literature, creative writing, sculpture, photography, painting, theater, dance, music performance, and the arts and humanities at CSI.

About SILO

SILO is a journal of creative writing, visual, and multimedia art that focuses on the work of students and alumni from the College of Southern Idaho. The journal has been published in print form and online for creative writing and visual art on a yearly basis near the end of the Spring Semester, and we now hope to expand the tradition by developing SILO into an online collecting place not just for exceptional creative writing, but also multi-media art representing the works of both current CSI students and alumni.



Seeking works of creative writing (including poetry, short fiction, personal essays, and creative non-fiction), works of creative visual art (interpret as you will), and multi-media submissions such as videos and audio files for our next issue. You may send fiction, creative non-fiction, and/or essays of no more than five thousand words and/or up to five poems. At this time there is no limit to the number of images that an artist can submit, but please submit visual art in JPG or PNG format no larger than 25 MB. For performance videos such as dramatic readings, dance, and music performances, please post your video to YouTube and then submit the link. The maximum length is eight minutes. We accept submissions year-round, but to be included in each year's issue, please submit by March 1, 2024.

To submit to *SILO*, please head over to <https://www.csi.edu/silo/submission-form.aspx>. Back issues and other information can be found at <https://silo.csi.edu/>. Please email your questions to rmayer@csi.edu.

The English Department of the College of Southern Idaho is taking submissions for its online journal, *SILO*. Current CSI students and alumni are invited to send short stories, poems, essays, videos, and images in literature, creative writing, sculpture, photography, painting, theater, dance, music performance, and the arts and humanities at CSI.

To submit to *SILO*, please head over to <https://www.csi.edu/silo/submission-form.aspx>. Back issues and other information can be found at <https://silo.csi.edu/>. Please email your questions to rmayer@csi.edu.

COMMUNITY EVENTS



CSI
**ESCAPE
NIGHT**
EVERY WEDNESDAY
must have valid college id on arrival

USE THE CODE "ESCAPECSI" for
10% OFF TICKET & 1 FREE SMALL POPCORN AND DRINK

WWW.ESCAPUARY.COM

THE ESCAPUARY ESCAPE ROOMS

CSI ESCAPE NIGHT

Every Wednesday! Must have
valid college ID on arrival

Use the code ESCAPECSI for
10% OFF ticket & 1 free small
popcorn and drink

[Visit our Website](#)



CSI STUDENT SPECIAL



ONLY \$10!!!

Includes same day climbing, yoga
and fitness (plus gear)!

Show us your student ID card!

Gemstone Climbing Center

CSI Student Special

Only \$10!!!

Includes same day climbing, yoga and fitness
(plus gear)

Make sure that you have your CSI Student ID
to receive the special.

Santas Toy Box St. Lukes Magic Valley

Being in the hospital is
stressful during the
holidays. Santa's Toy Box
will be open December
18th-24th from 2-6 pm and
by appointment and will
have stations set up as well
as a place to have gifts
wrapped. Please contact
Hallie (Child Life Specialist)
by email for any further
questions or if you would
like to volunteer or donate
items. (chanceha@slhs.org)
or jessicaka@slhs.org 208-
731-6023

How to help: Community



members can donate new, unwrapped toys, games, books, and art supplies for kids of all ages.

SERVICES FOR STUDENTS



CSI Library Fall Semester Hours

August 21-December 15

Monday-Thursday
7:30am-9:00pm

Friday
7:30am-4:00pm

Saturday
12:00pm-4:00pm

Closed Sundays

Fall 2023

FALL 2023 CAMPUS TESTING CENTER HOURS

STARTING MONDAY, AUGUST 21, 2023

**TEMPORARILY LOCATED IN
CANYON BLDG RM 119**

**Monday-Friday
9:00 am-7:00 pm
Saturday
9:00 am-1:00 pm**

PLEASE REMEMBER:

*No tests will be started the last hour the testing center is open.
(No exceptions)*



Phone: 208.732.6532

Email: campustesting@csi.edu

Campus Testing Center Hours

Temporarily Located in
Canyon Bldg Rm 119

Monday-Friday
9:00am-7:00pm

Saturday
9:00am-1:00pm

Please remember:
No tests will be started the
last hour the testing center is
open
(No exceptions)

Phone: 208.732.6532

Email:
campustesting@csi.edu

In Person Tutoring

Monday-Thursday
11:00pm-8:00pm

Friday
11:00pm-4:00pm

Sunday
12:00pm-4:00pm

Subject Areas

- Math
 - Biology
 - Chemistry
 - Writing
 - Business
- Allied Health and others!

Access Tutor
Schedules Through
MyCSI

Tutoring

TUTORING



In-Person Tutoring:

Monday-Thursday 11-8 pm

Friday 11-4 pm

Sunday 12-4 pm

Online Tutoring by Appointment

Online Drop-in Tutoring

Subject Areas

- Math
- Biology
- Chemistry
- Writing
- Business
- Allied Health
- and others!

Access Tutor Schedules Through MyCSI



208-732-6685



csi.edu/learning-tutoring-commons

Looking for Resources?

Check out the Student Support Services. Click on the MYCSI Tab at the top of the CSI homepage and then select Student Services or follow the link

[Student Support Services](#)



If you are a current student who could use food assistance please know that your request will be handled privately and confidentially. You are eligible for a food box twice a month.

Click on the link below to access the form.

[Gilbert's Pantry Form](#)

Gilbert's Pantry is located in the Student Affairs Office on the 2nd Floor of the Taylor Bldg.

We listen. We care. We help you learn skills for dealing with life.



Student Mental Health Services
Phone: (208) 732-6260

Located on the 2nd floor of the Taylor Building in the Center for Student Support and Connection.



College Of Southern Idaho
csieagles

Follow us on snapchat:

csieagles

To be in the know of the student events and to ask us any questions you have!

Check out the links below to get more information on services available for you.

[Food and Dining](#)

[Herrett Museum & Planetarium](#)

[Student Housing](#)

[Library](#)

[Student Mental Health Services](#)

[Outdoor Recreation & Challenge Course](#)

[Student Accessibility Services](#)

[Recreation Center](#)

[Visit the CSI Event Calendar!](#)

[Student Activities](#)



College of Southern Idaho | www.csi.edu



College of Southern Idaho | 315 Falls Ave., Twin Falls, ID 83301

[Unsubscribe mstark@csi.edu](mailto:mstark@csi.edu)

[Update Profile](#) | [Constant Contact Data Notice](#)

Sent by info@csi.edu powered by



Try email marketing for free today!