

NEWS AND UPDATES

Student Events & Activities Newsletter

January 30, 2023 | Volume 2: Issue 20



Students, consider submitting your creative or academic writing (in English and/or Spanish) to NULC (National Undergraduate Literature Conference). The deadline for submission is February 15th, 2023. For more information please click on the link below.

[National Undergrad Literature Conference](#)



The English Department of the College of Southern Idaho is taking submissions for its online journal, *SILO*. Current CSI students and alumni are invited to send short stories, poems, essays, videos, and images in literature, creative writing, sculpture, photography, painting, theater, dance, music performance, and the arts and humanities at CSI.

[SILO Website](#)



WE ARE HIRING

Work-Study
Positions
at the
CSI Preschool Lab!

The first position available is to support children in the classroom. Responsibilities would include playing and interacting with children on their level in an outdoor environment. Preferable hours for this position 12:30-4:30 a few days of the week.

The second position available is to work one-on-one with children with special needs in the classroom. Responsibilities would include supporting transitions, working with the child to reach academic goals, and taking time to understand the child's strengths. Preferable hours for this position 12:30-4:30 a few days of the week.

The third position available is to help with daily cleaning and organizing of the classroom. This includes preparing materials, fixing broken materials, and helping with office tasks. We are flexible on hours for this position.

Contact Office

Jamie Bridges

208-732-6857
jbridges@csi.edu

EVENTS AND ACTIVITIES

**Scents of
the Season**

Tuesday
January 31

Scents of the Season



TUE. JAN. 31
11AM-1PM
Upstairs SUB

Stop by and learn about self-care while you make an essential oil salt scrub, lotion, or roll-on blend.

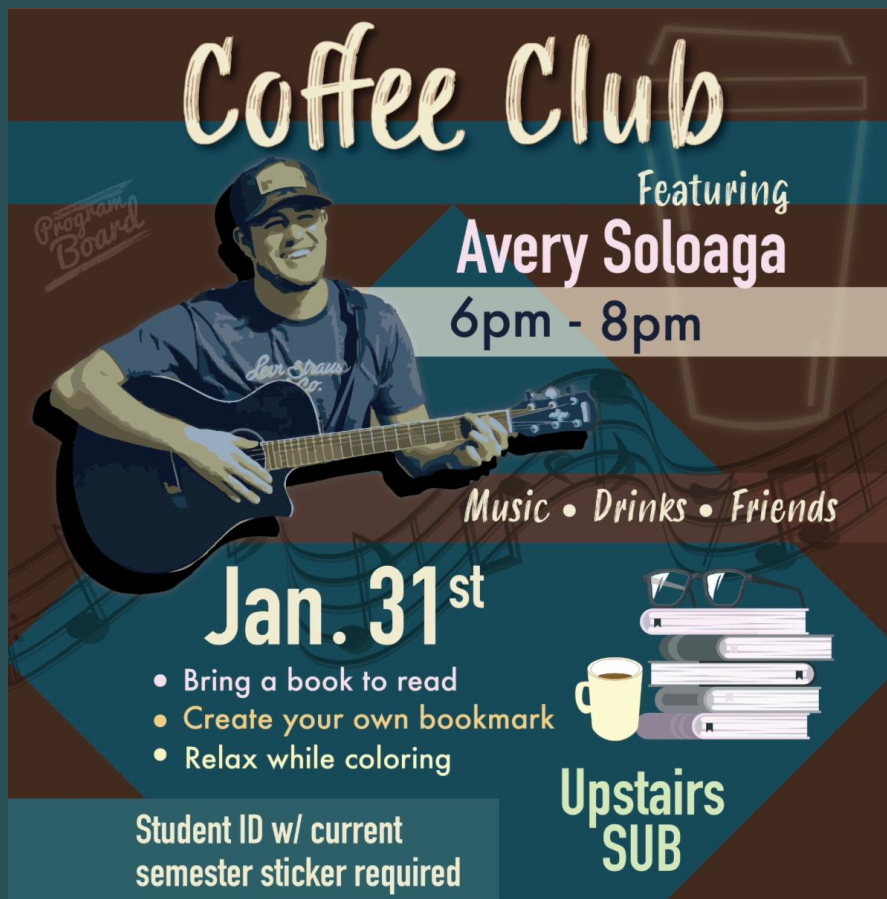
Limited supplies!

11AM-1PM
 Upstairs SUB

Stop by and Learn about self-care while you make an essential oil salt scrub, lotion, or roll-on blend.

*Limited Supplies

Coffee Club



Featuring
Avery Soloaga
6pm - 8pm

Music • Drinks • Friends

Jan. 31st

- Bring a book to read
- Create your own bookmark
- Relax while coloring

Student ID w/ current semester sticker required

Upstairs SUB

Coffee Club

Featuring
 Avery Soloaga

Music-Drinks-Friends

January 31st

6:00pm-8:00pm

*Bring a book to read

*Create your own bookmark

*Relax while coloring

Student ID w/current semester

**BLACK
 HIS AND**

HER- STORY

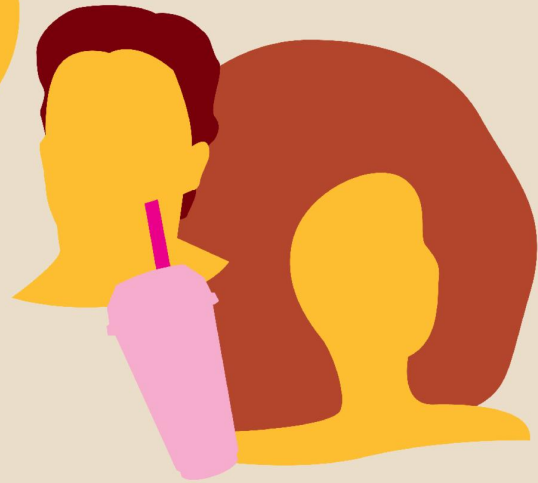
with Italian Sodas

on
THURSDAY
FEBRUARY 2nd

11:00AM-1:00PM

On the
2nd Floor
of the Student
Union Building

UPSTAIRS IN THE SUB
THURSDAY
FEB. 2ND
11AM-1PM



**BLACK
HIS & HER-STORY**
with Italian Sodas!



Pizza-Licious with Kahoot!

A trivia game night with Dessert Pizzas!

February 9th 6:00-8:00 PM

WIN PRIZES

UPSTAIRS SUB

Student ID with

SPRING 2023 Required.

PIZZA-LICIOUS with **Kahoot!**

A trivia game night with **DESSERT PIZZAS!**

9 FEB	6-8 PM
WIN PRIZES!	UPSTAIRS SUB ↑

Student ID
with current semester sticker required!



ATHLETICS CORNER

Show your team spirit below by signing up for alerts and never miss a game:

- [Signup for the e-newsletter](#)
- [Get text updates](#)
- [Never miss a game using the Game Webstream](#)
- [Stay up to date with live stats](#)

See More Athletic Events!

SERVICES FOR STUDENTS

Looking for Resources?

Check out the Student Support Services. Click on the MYCSI Tab at the top of the CSI homepage and then select Student Services or follow the link

[Student Support Services](#)

If you are a current student
who could use food assistance



please know that your request will be handled privately and confidentially. You are eligible for a food box twice a month. Click on the link below to access the form.

Gilbert's Pantry Form

Gilbert's Pantry is located in the Student Affairs Office on the 2nd Floor of the Taylor Bldg.



We listen. We care. We help you learn skills for dealing with life.

Student Mental Health Services
Phone: (208) 732-6260

Located on the 2nd floor of the Taylor Building in the Center for Student Support and Connection.



College Of Southern Idaho
csieagles

Follow us on snapchat:

csieagles

To be in the know of the student events and to ask us any questions you have!

Check out the links below to get more information on services available for you.

Food and Dining

Herrett Museum & Planetarium

Student Housing

Library

Student Mental Health Services

Outdoor Recreation & Challenge Course

Student Accessibility Services

Recreation Center

Visit the CSI Event Calendar!

Student Activities

COMMUNITY RESOURCES



College of Southern Idaho | www.csi.edu



College of Southern Idaho | 315 Falls Ave., Twin Falls, ID 83301

[Unsubscribe mstark@csi.edu](mailto:mstark@csi.edu)

[Update Profile](#) | [Constant Contact Data Notice](#)

Sent by info@csi.edu powered by



Try email marketing for free today!