

NEWS AND UPDATES

Student Events & Activities Newsletter

April 15th, 2024 | Volume 3: Issue 24



Fill Your Cup At

April is Community College Month!

20% Off
All CSI Drinkware
During April!

At the CSI Store
and online at
bookstore.csi.edu

Community college

**Fill Your Cup
at Community
College**

April is community college month! Get 20% off all CSI drinkware during April! At the CSI Bookstore and online at bookstore.csi.edu.

EVENTS

Student ID with SPRING 2024 sticker is required to attend events. Don't have the sticker, please stop by Enrollment Services in the Taylor Building.

Duck Hunt

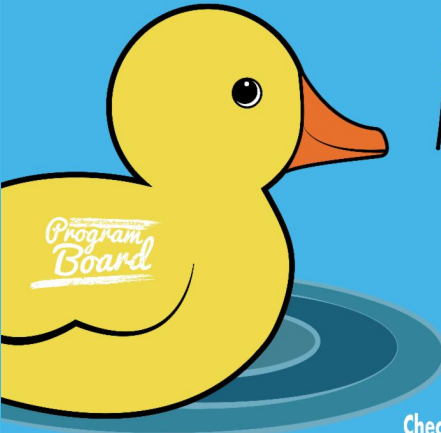
April 1st-19th

Find a duck? Bring it to the Student Affairs office for a prize!!

Check the Program Board social media every day at 12pm for

CSI's Program Board presents the 2024 Spring

DUCK HUNT



April 1-19

FIND A DUCK?
BRING IT TO THE
STUDENT AFFAIRS
OFFICE FOR A
PRIZE

Check the Program Board social media
everyday at 12pm for a new duck!

Must be a CSI student with current semester sticker to claim - Each student may only claim one duck

a new duck!

Each student may only
claim one duck! Must
be a CSI student with
current semester
sticker.

Alcohol Awareness and Consent

Monday, April 15th
12:00 to 2:00 PM

Donuts & Shirts
Games & Activities
Location - Upper Sub

Wednesday, April 17th
12:00 to 2:00 PM

Meet your TFPD
Pedal Cars & Drunk Goggles
Mocktails
Location - Outside Taylor Lawn



Bring your
Student ID
with
Current
semester
sticker!

Alcohol Awareness and Consent Week

Monday, April 15th
12:00 to 2:00 PM
Location: Upper SUB

Donuts, shirts, games
and activates!

Wednesday, April
17th
12:00 to 2:00 PM
Location: Outside
Taylor Lawn

Meet your TFPD,
Pedal Cars, Drunk
Goggles, Mocktails



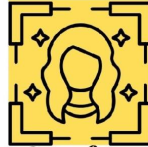
Mock Interview Workshop

COME PRACTICE YOUR INTERVIEW SKILLS, LEARN TIPS, & BUILD YOUR CONFIDENCE

When: Tuesday, April 16th 12-2 pm

Where: Upper SUB

Eagle Hour Co-hosted by:



Get a free, professional headshot.

Enjoy snacks & prizes!

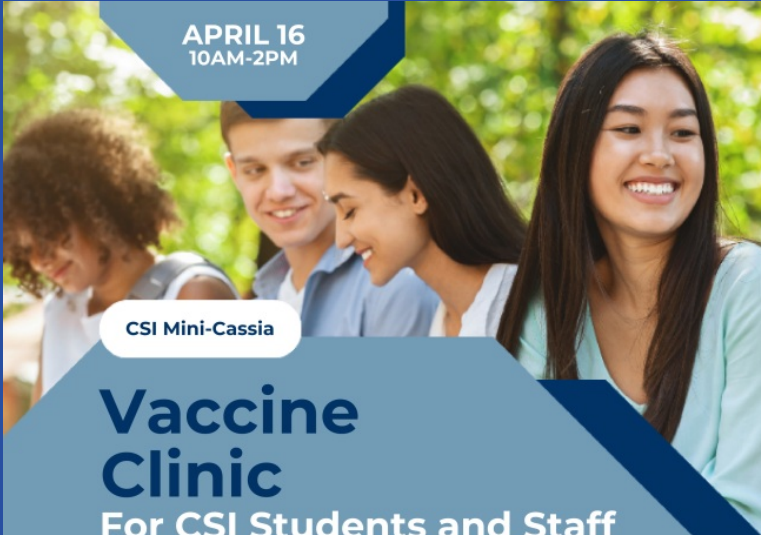
Mock Interview Workshop Eagle Hour

Tuesday, April 16th
12:00-2:00 PM

Location: Upper SUB

Come practice your interview skills, learn tips and build your confidence. Get a free professional headshot, snacks and prizes.

APRIL 16
10AM-2PM



CSI Mini-Cassia

Vaccine Clinic

For CSI Students and Staff
Located at the CSI Mini-Cassia Center
Tuesday, April 16 | 10AM-2PM

Vaccines Offered:

- Flu Shots
- COVID-19
- TDAP
- HPV
- MenACWY
- MenB

Also Offering Vaccine Record Lookups



South Central Public Health District
Prevent. Promote. Protect. phd5.id.gov

Vaccine Clinic

Tuesday, April 16th,
10:00 AM - 2:00 PM

Location: Mini-Cassia Center

Vaccines offered: Flu shots, COVID-19, TDAP, HPV, MenACWY, MenB. Also, offering vaccine record lookups.

Provided by South Central Public Health District.

STUDENT ACCESSIBILITY

CRASH COURSE

BLIND OBSTACLE COURSE & SIGN YOUR

NAME IN



April 18, 12:00-2:00 PM
Taylor 2nd floor/SUB

FREE PENCILS, ALPHABET CARDS, SIGN LANGUAGE STICKERS, AND GUM!!

Partnering with Commission of the Blind

Student Accessibility Crash Course Eagle Hour

Thursday, April 18th
12:00-2:00 PM

Location: Upper SUB

Come do a blind obstacle course and learn to sign your name in sign language.

Free pencils, alphabet cards, sign language stickers and gum!

Program Board

THE MINISTRY OF UNGENTLEMANLY WARFARE

APRIL 18
Magic Valley Cinema 13 | Tickets in the Student Affairs Office
Doors Open at 7:15 pm | Max 1 Guest
Doors Close at 7:30 pm
STUDENT ID WITH CURRENT SEMESTER STICKER REQUIRED

The Ministry of Ungentlemanly Warfare

Thursday, April 18th
7:15 PM

Location: Magic Valley Cinema 13

Come get your tickets in the Student Affairs Office. Max 1 guest.

Student ID with current semester sticker required.

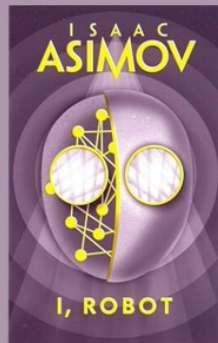
Around the World



Festival

Friday, April 19th,
5:00 - 7:00 PM
Location: Upper SUB
Diversity Council is hosting an event to celebrate cultures around the world, showcasing the rich diversity represented within our CSI Community.

THE CSI LIBRARY BOOK CLUB PICK FOR APRIL IS...



JOIN US IN THE LIBRARY ON THURSDAY, APRIL 25TH, FROM NOON TO 1 TO DISCUSS. COPIES AVAILABLE FOR CHECK OUT! OPEN TO ALL STUDENTS, STAFF AND COMMUNITY MEMBERS!

CSI Library Book Club

Join us in the library on Thursday, April 25th from noon to 1:00 to discuss the book, *I, Robot* by Isaac Asimov.

Copies available for check out! Open to all students, staff and community members.

Aloha Summer

Thursday, April 25th
5:00-7:00 PM

Location: North Lawn

End of Year Celebration!
Photobooth, Axe

Aloha Summer
End of the Year Celebration

Thursday
April 25th
5-7pm
North Lawn

Program Board & Diversity Council

Photobooth
Luau Games & Food
Axe Throwing

Student ID with current Semester sticker required

Throwing, and Luau Games and Food Axe.

TRIO
ORIENTATION EVENT

CSI STUDENTS ARE INVITED TO...

CASINO Night

JOIN TRIO FOR FRIENDS, FOOD & FUN
TABLE GAMES | PIZZA & DRINKS | PRIZES

THURSDAY MAY 2

CSI | TAYLOR BUILDING | 4:00-6:00 PM

CSI COLLEGE OF SOUTHERN IDAHO

(208) 252-5434
abeeralqurashi@isu.edu

GRAND CANYON UNIVERSITY

Casino Night

Thursday, May 2nd
4:00-6:00 PM
Taylor Building

Join Trio for friends, food and fun! Table games, pizza, drinks and prizes

If you have any questions contact Aberra at 208-252-5434 or email abeeralqurashi@isu.edu

Intramural Sports

Softball - Monday and Wednesday 5:30 - 7:30 PM

SOFTBALL- STARTS 04/08
MON & WED 5:30-7:30PM

PICKLEBALL- STARTS 04/02
TUES & THURS 6-8PM

SOCCER- STARTS 04/12
FRI 5-7PM

INTRAMURAL SPORTS

SIGN-UP BY
MARCH 29TH



EMAIL QUESTIONS TO RECCENTER@CSI.EDU



PICKLEBALL
SIGN-UP



SOFTBALL
SIGN-UP



SOCCER
SIGN-UP

Pickleball - Tuesday and
Thursday 6:00 - 8:00 PM
Soccer - Friday 5:00 -
7:00 PM

Walk on positions may
still be available. Come
cheer on the teams!

CSI Sunspot Gallery - 2nd floor of the Taylor Bldg.
Currently on View: Calligraphy works from Idaho Ink Spots Calligraphy Guild
& Angela Batchelor's GNEC Class



Spring 2024

CSI Sunspot Gallery
presents Calligraphy
works from Idaho
Ink Spots Calligraphy
Guild and Angela
Batchelor's GNEC
Class.

2nd floor of the Taylor
Bldg.

Study Rooms

Have a group project?
Need a quiet place to
study? Call to reserve a

HAVE A GROUP PROJECT? NEED A QUIET PLACE TO STUDY?

CALL TO RESERVE A STUDY ROOM IN THE LIBRARY!

ROOMS MUST BE SCHEDULED AT LEAST 1 DAY IN ADVANCE.

Contact Allison Beard at
208-732-6500 or
abeard2@csi.edu



student room in the CSI Library. Room must be scheduled at least 1 day in advance.

Contact Allison Beard at
208-732-6500 or
abeard2@csi.edu



ARE YOU GOOD AT MATH AND HAVE AVAILABILITY IN JUNE AND JULY? WELL, WE HAVE A PERFECT SUMMER JOB FOR YOU! THE LEARNING AND TUTORING COMMONS IS LOOKING FOR MATH TUTORS TO HELP SUMMER SCHOOL STUDENTS. SEND AN EMAIL TO MLEAVITT2@CSI.EDU IF YOU ARE INTERESTED IN HELPING OUT. THIS IS A PAID POSITION.

Summer Math Tutors Needed

Are you good at math and have availability in June and July? Well, we have the perfect summer job for you! The Learning and Tutoring Commons is looking for Math Tutors to help summer school students. Send an email to mleavitt2@csi.edu if you are interested in helping out. This is a paid position.



Apply to be a Resident Assistant (RA)

A Resident Assistant

(RA) is a student leader and resident of CSI Student Housing whose main task is to create a sense of belonging and a community of support. As a role model, resource, and advocate for other residents, RAs also serve on the RA Council to assist in events and activities campus wide, respond to emergencies, help create a safe space for residents to thrive, inform residents of campus events, do rounds, and work Cage shifts (EH only).

Benefits

- Housing scholarship
- Weekly and annual leadership training
- Annual leadership retreat
- Annual Challenge Course experience
- Meal plan scholarship (EH only)

Job duties

- Create community with CSI student housing residents
- Participate in Leadership Development
- Assist the Residence Coordinator/Apartment Manager and Office of Student Affairs
- Enforce & abide by the Student Code of Conduct & Housing Policies
- Serve on the RA Council
- Plan and execute events & activities (EH)
- Rounds &/or cage shift, weekdays and weekends

Requirements

- Enroll in & maintain 12+ credits/semester
- Maintain a 2.5+ GPA
- Reside in CSI Housing
- Role model a standard of professional conduct
- Maintain good financial & judicial standing

FOR MORE INFORMATION

EAGLE HALL: AIMEE BOYER
EMAIL: HOUSING@CSI.EDU
PHONE: 208-732-6575

EAGLE VIEW: WANDA LUNA
EMAIL: WLUNA@CSI.EDU
PHONE: 208-733-0740



Apply to be a Resident Assistant (RA). An RA is a student leader and resident of CSI Student Housing whose main task is to create a sense of belonging and a community of support. Benefits include a housing scholarship, weekly leadership training, leadership retreat, challenge course experience and meal plan scholarship (EH only).



Apply for the Presidential Leaders Program (PLP)

DEADLINE: April 30, 2024.

Highlights of the Program

- Leadership Retreat
- Leadership experience
- CSI Credits paid for
- Stipend for book
- 2 Mentors
- Team Building
- Direct access to CSI Admin for guidance and future support.
- Meet with CSI Business partners on and off campus.

How do I apply?

- You will need two letters of recommendation and an unofficial transcript ready to upload with your application.
- You must use your csi.edu login to access the application.
- You must submit your complete application by April 30th to be considered for this program.
- 3.5 GPA required



TO APPLY
SCAN THE QR CODE



Apply for the Presidential Leaders Program (PLP). Deadline is April 30th, 2024. Highlights of program include a leadership retreat, CSI credits paid for, stipend for books, 2 mentors, team building, and direct access to CSI Admin for guidance and future support.

Get Notifications of Events and Activities on the CSI App

How to Join the Channel-
Step by Step



Get notifications of events and activities on the CSI App. 1. open the CSI App > 2. Click on the middle icon > 3. Click the top left menu icon > 4. Select find a channel then choose activities and athletics > 5. Select join channel and now you will be sent notifications on activities and athletics.



ENHANCING YOUR STUDENT EXPERIENCE

The College of Southern Idaho is pleased to announce that **all student systems are back online as of April 1, 2024!**

MyCSI has a new look, and we now have a MyCSI Self Service.

MyCSI Self Service is your central location to register for classes, drop/withdraw from classes, view your unofficial transcript, review finances, and more. Access through MyCSI.

We are here to answer your questions and help you navigate these changes.

On this website we have step-by-step tutorials for MyCSI Self Service. You are welcome to connect with an Enrollment Specialist at 208-732-6250, or visit the main floor of the Taylor Building for in-person assistance.

Visit the MyCSI Self Service Tutorials website for help.
<https://my.csi.edu/student-portal-tutorials/>

**MyCSI
Self Service
Tutorials**



The College of Souther Idaho is pleased to announce the change of our Student Information System as of April 1, 2024. With this system change, your student experience will be different. MyCSI, registering for classes, dropping/withdrawing classes, paying tuition, and more will have a new look.



ABOUT LSAMP

Thinking about joining?

The LSAMP program at College of Southern Idaho aims to offer you an enriching journey, supporting your personal, academic, and scholarly growth.

As an LSAMP participant, you'll receive comprehensive assistance in social, academic, and professional aspects to empower you in reaching your aspirations.



CONTACT US

Become a part of a community of diverse scholars in STEM fields.

(208) 732-6852
nkober@csi.edu
CSI Main Campus
Shields 203A

PROGRAM COORDINATOR

Want to know more about the program and see how it might help you? Let's talk!

Schedule a time to meet and learn about LSAMP and research opportunities.

Nikki Kober
LSAMP Program Coordinator
nkober@csi.edu



This program is supported by the Pacific Northwest Leeds Stokes Alliance for Minority Participation through the National Science Foundation under Award No. HRD-1610465.

BUILDING STUDENT SUCCESS IN STEM

LSAMP

LOUIS STOKES ALLIANCE FOR MINORITY PARTICIPATION

Embark on an exciting adventure within the LSAMP program at the College of Southern Idaho. Join a supportive community that is dedicated to your advancement. Identify your place, ignite your interests. This is your opportunity to define your journey and embrace your dreams.

CONNECT • ENGAGE • SUCCEED



Are you interested in becoming a part of a community of diverse scholars in STEM fields? As a LSAMP participant, you'll receive comprehensive assistance in social, academic, and professional aspects to empower you in reaching your aspirations. If you would like to join email nkober@csi.edu or call 208-732-6852.

A young child with short brown hair, wearing a blue long-sleeved shirt and grey pants, is crouching on a light-colored floor. The child is focused on playing with several colorful toys, including a red and orange stacking ring and a yellow and green stacking ring. The background is a bright, out-of-focus indoor setting.

YOU MAY BE ELIGIBLE FOR A CCAMPIS CHILD CARE SCHOLARSHIP

DO YOU NEED CHILD CARE ASSISTANCE?

- Do you have children under the age of 5?
- Are you a current student at CSI?
- Do you have a GPA of at least 2.0?

If so, you may be eligible for a CCAMPIS Child Care Scholarship.
Awards are made on a first come first serve basis with committee approval.



TO APPLY:

Visit www.csi.edu/financial-aid/scholarships/csi-scholarships.aspx
and click on CCAMPIS Child Care Scholarship

QUESTIONS? Contact:

Jayde Wilson • jwilson7@csi.edu | Clara Centeno • [cccenteno@csi.edu](mailto:ccenteno@csi.edu)
or talk to the Financial Aid Office

Do you need child care assistance? Do you have children under the age of 5? Are you a current student at CSI? Do you have a GPA of at least 2.0? If so, you may be eligible for a CCAMPIS Child Care Scholarship. To apply visit www.csi.edu/financial-aid/scholarships/csi-scholarships.aspx.



LIVE ON CAMPUS

In Eagle Hall



GET THE FULL COLLEGE EXPERIENCE:

Enjoy events and activities, make connections, friends, and interact with our amazing staff.



SAVE TIME AND FUEL: Get extra sleep by eliminating the commute. All classes are within walking distance.



SAVE MONEY: Save money on food and rent compared to other local housing options.



AMENITIES: Computer Lab, Activity Center, Meal Plan included, access to the Student Rec Center and free parking.



**SCAN FOR
MORE INFO**

CONTACT

AIMEE BOYER - Residence Hall Coordinator
housing@csi.edu 208.732.6575



Live on Campus - In Eagle Hall

Get the full college experience and save time, fuel and money!
Contact our Residence Hall Coordinator - Aimee Boyer at housing@csi.edu or
208.732.6575 if you are interested.



2024-2025 Agriculture Department & NextGen **SCHOLARSHIP**



Apply today!

1st Priority Deadline: **Tuesday, April 9**

2nd Priority Deadline: **Tuesday, May 7**

“How will your chosen field of study benefit the agriculture, food, or natural resource industries?”

CONTACT SHALANI MAY
CSI NextGen Grant Manager

✉ swilcox2@csi.edu

☎ 208-732-6499

🌐 <https://www.csi.edu/agriculture-department/scholarships.aspx>



USDA National Institute of Food and Agriculture
U.S. DEPARTMENT OF AGRICULTURE

The College of Southern Idaho State has not discriminated on the basis of race, color, religion, sex, age, national origin, disability, genetic characteristics, ancestry, marital status, political beliefs, sexual orientation, gender identity, or sex expression. This policy applies to all programs, activities, and facilities, including admissions, scholarships, and employment. Individuals having questions or concerns regarding this policy should contact: Title IX, Access, Diversity or Equity, Inclusion, & Compliance, 500 S. State St., P.O. Box 1625, Twin Falls, ID 83421, or by telephone at 208-732-1311. For more information, please visit www.csi.edu/diversity. This document is provided for informational purposes only and is not intended to constitute an offer of admission to any program.

Agriculture Department and NextGen Scholarship

1st Priority Deadline: **Tuesday, April 9, 2024**

2nd Priority Deadline: **May 7, 2024**

Contact Shalani May at swilcox2@csi.edu with any questions.

Community Events





OFF THE WALL ART SALE

Come check out our large selection of gently used and new affordable art pieces for purchase. Enjoy great music and light refreshments.

**GRAND OPENING
APRIL 19**
5 pm - 8 pm

APRIL 20
10 am - 4 pm

**FIRST UNITED
METHODIST CHURCH**
360 Shoshone St. E.
Twin Falls, ID

All proceeds benefit food insecurity in the Magic Valley.

Off the Wall Art Sale

April 19th,
5:00PM -8:00PM

April 20th
10:00AM-4:00PM

Location: First United
Methodist Church 360
Shoshone St. East, Twin
Falls

Golf IN

Spread the word!
Golf IN is open
late Wednesday
Nights for CSI
Students.

Not sure what to
do at night? Bring
your friends to
Golf IN for a
night of golf at
Golf IN. Open for
CSI students from
9pm-Midnight on
Wednesday nights
starting April



3rd. Book Now
at Golf IN and use
coupon code
CSISTUDENT for \$15
off.

SERVICES FOR STUDENTS

CSI Library Spring Semester Hours

January 16- May 10

Monday-Thursday
7:30am-9:00pm

Friday
7:30am-4:00pm

Saturday

12:00pm-4:00pm

Closed Sundays

CSI LIBRARY

Spring Semester Hours

MONDAY - THURSDAY

7:30 AM - 9 PM

FRIDAY

7:30 AM - 4 PM

SATURDAY

12 - 4 PM

SUNDAY - CLOSED

Work-Based Learning Center

Did you know CSI has a Work-Based Learning Center that offers career services? Our career coach can guide you to the assessments, tools and opportunities to help lead you to success. A fast, fun, free career assessment can help guide you to your next move, plus we can help update your resume and LinkedIn profile. Learn more about apprenticeships, career coaching, job search support, internships and more career services at our website and schedule a 15-minute consultation



Stuck on your career path? Resume help, career coaching and internship matching are right here!

get help now!

CSI WORK-BASED
LEARNING CENTER

today.

[Website](#)

LOOKING FOR *ADVENTURE?* FIND IT AT CSI'S CHALLENGE COURSE!



Experience the exhilaration of being up to 50 feet off the ground in our ropes course on over 40 high elements or play around in our low course with 20 different obstacles that will challenge your physical and mental abilities!



SCAN FOR
MORE INFO



ABOUT US

Looking for something fun to do inside? CSI is the proud owner of one the largest campus-based rope courses in the world!

- Group sizes of 10 to 300
- 20 low elements
- 40 high elements up to 50 feet high!

Our experiential learning programs are custom designed to provide participants with fun and engaging experiences while in an emotionally and physically safe environment regardless of their age or physical ability. We can integrate 100+ games and initiatives along with low/high elements to provide a foundation for the transference of new skills into the workplace and daily living.

***FREE FOR CSI STUDENT CLUBS!**

Every official CSI club and athletic program can participate in an indoor or outdoor challenge course event once a semester.

**CONTACT US
CHALLENGECOURSE@CSI.
EDU 208-732-6696**

In Person Tutoring

Where: Meyerhoeffer
Building Room 202
Sunday: 12:00-4:00PM
Monday-Thursday:
11:00AM-8:00PM
Friday: 11:00AM-4:00PM

In Person Math Lab Tutoring

Where: Shields Building
Room 207
Monday-Friday: 8:00AM-
4:00PM

TUTORING

\$2.00 VOUCHER & FREE TUTORING

IN-PERSON TUTORING

MANY SUBJECTS AVAILABLE

Where:

Meyerhoeffer Building
 2nd floor of the Library, Room 202

When:

Sunday: 12:00pm – 4:00pm
 Monday – Thursday: 11:00am – 8:00pm
 Friday – 11:00am – 4:00pm

ONLINE TUTORING

MANY SUBJECTS AVAILABLE

Drop-in or by Appointment

To Access Online Services:

1. Visit MyCSI
2. Select "Tutoring"
3. Select "Peer Tutoring Schedules or "Online Writing Lab (CSI OWL)"

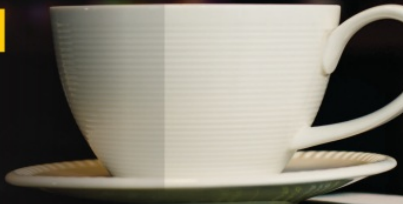
IN-PERSON MATH LAB

Where:

Shields Building, Room 207

When:

Monday–Friday: 8:00am–4:00pm



Sharpen Your Skills!

Contact Us: Moriah Leavitt, LTC Coordinator mleavitt2@csi 208-732-6686

Subject Areas

- Math
- Biology
- Chemistry
- Writing
- Business
- Allied Health and others!

Access Tutor Schedules Through MyCSI

[Tutoring](#)

RIDE

TFT



TWIN FALLS TRANSIT

RELIABLE

RIDE TFT hours of operation are:

6 a.m. - 9 p.m. Mon. - Fri.
7 a.m. to 9 p.m. Saturdays

\$3 Standard fare
\$1 60 and older or with disability

CONVENIENT

Download the convenient app and schedule your ride, see your wait time and drivers location, and more!

SAFE

RIDE TFT is available for individual riders as young as 12 to ride alone. Any age with an adult. Be assured that you and your loved ones are safe.

FAST

Pick up at your door and drop off at or near your desired location. It's better than a big bus, it's micro transit.

+1 208-974-7433



Ride TFT Twin Falls Transit

Ride TFT hours:
 Mon-Fri: 6 AM - 9 PM
 Sat: 7 AM - 9 PM

\$3 Standard fare

Call 208.974.7433 to schedule a ride.

Looking for Resources?

Check out the Student Support Services. Click on the MYCSI Tab at the top of the CSI homepage and then select Student Services or follow the link

[Student Support Services](#)



If you are a current student who could use food assistance please know that your request will be handled privately and confidentially. You are eligible for a food box twice a month.

Click on the link below to access the form.

[Gilbert's Pantry Form](#)

Gilbert's Pantry is located in the Student Affairs Office on the 2nd Floor of the Taylor Bldg.



We listen. We care. We help you learn skills for dealing with life.

Student Mental Health Services
Phone: (208) 732-6260

Located on the 2nd floor of the Taylor Building in the Center for Student Support and Connection.



College Of Southern Idaho
csieagles

Follow us on snapchat:

[csieagles](#)

To be in the know of the student events and to ask us any questions you have!

Check out the links below to get more information on services available for you.

[Food and Dining](#)

[Herrett Museum & Planetarium](#)

[Student Housing](#)

[Library](#)

Student Mental Health Services

Outdoor Recreation & Challenge Course

Student Accessibility Services

Recreation Center

Visit the CSI Event Calendar!

Student Activities



College of Southern Idaho | www.csi.edu



College of Southern Idaho | 315 Falls Ave., Twin Falls, ID 83301

[Unsubscribe mstark@csi.edu](mailto:mstark@csi.edu)

[Update Profile](#) | [Constant Contact Data Notice](#)

Sent by info@csi.edu powered by



Try email marketing for free today!