

# NEWS AND UPDATES

## Student Events & Activities Newsletter

April 1st, 2024 | Volume 3: Issue 22



A big thank  
you to the  
nutrition club  
for their  
Gilbert Pantry  
Food Drive!

**A BIG THANK YOU TO  
THE NUTRITION CLUB  
FOR THEIR GILBERT  
PANTRY FOOD DRIVE!**

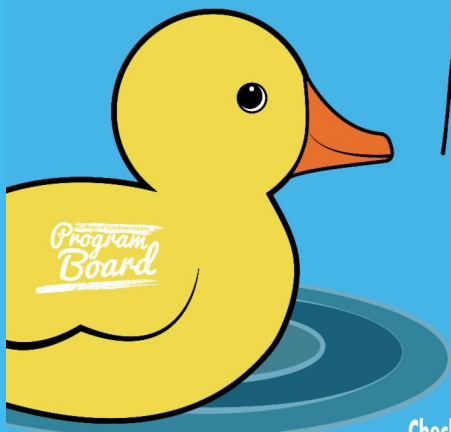
## EVENTS

Student ID with **SPRING 2024** sticker is required to attend events. Don't have the sticker, please stop by Enrollment Services in the Taylor Building.

### Duck Hunt

CSI's Program Board presents the 2024 Spring

# DUCK HUNT



## April 1-19

### FIND A DUCK?

BRING IT TO THE  
STUDENT AFFAIRS  
OFFICE FOR A

### PRIZE

Check the Program Board social media  
everyday at 12pm for a new duck!

Must be a CSI student with current semester sticker to claim - Each student may only claim one duck

## April 1st-19th

Find a duck? Bring it to  
the Student Affairs  
office for a prize!!

Check the Program  
Board social media  
every day at 12pm for  
a new duck!

Each student may only  
claim one duck! Must  
be a CSI student with  
current semester  
sticker.

## FAMILY FEUD

### EAGLE HOUR

WHEN: TUESDAY, APRIL 2ND  
12:00-2:00PM

WHERE: UPPER SUB

GET YOUR FRIENDS  
TOGETHER TO PLAY SOME  
FAMILY FEUD! STAFF AND  
FACULTY ARE WELCOME TO  
PARTICIPATE.

HAVE QUESTIONS ABOUT THE NEW  
STUDENT PORTAL? STOP BY TO GET  
YOUR QUESTIONS ANSWERED AND  
GET A HANDOUT FOR STUDENT  
PORTAL TUTORIALS.

## Family Feud Eagle Hour

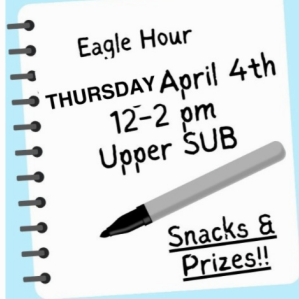
Tuesday, April  
2nd  
12:00-2:00 PM

Location: Upper SUB

Get your friends  
together to play some  
Family Feud! Staff and  
Faculty are welcome  
to participate.

We will also be  
providing some helpful  
handouts about the  
student portal change.

## Resume Workshop Eagle Hour



The CSI Work-Based Learning Center & CSI Alumni Association can help you-

- Create a resume
- Prepare for an interview
- Use social media professionally
- Learn about career services available to you on campus

## Resume Workshop



Thursday, April 4th

12:00-2:00 PM

Location: Upper SUB

CSI Work-Based Learning Center and CSI Alumni Association can help you:

- Create a resume.
- Prepare for an interview.
- Use social media professionally.
- Learn about career services available to you on campus.

Free snacks and prizes!

# VET TECH DOG WASH



**CSI VET TECH CLINIC  
APRIL 6TH  
9AM - 2PM**

SWING BY THE VET TECH CLINIC  
WHERE OUR STUDENTS WILL GIVE  
YOUR DOG A BATH

ALL PROFITS GO TO  
OUR PROGRAM TO  
BENEFIT OUR  
STUDENTS

- \$25 BATH AND TOWEL DRY
- \$10 NAIL TRIM

CSI VET TECH PROGRAM PAGE



CONTACT STACY GLAUNER FOR QUESTIONS AT  
SGLAUNER@CSI.EDU OR 208.732.6401

## Vet Tech Dog Wash

Saturday, April 6th  
9:00AM - 2:00PM

Location: Vet Tech Clinic

Vet Tech students will be giving dog baths!  
\$25 for bath and towel dry, \$10 nail trim.

All profits go to the Vet Tech program.



## 6th Annual All Business Conference Volunteers Needed

Students can actively participate in a professional setting and gain exposure to local entrepreneurs, lenders, and various influential leaders. The conference promises to be a significant networking event, providing volunteers with a unique chance to connect with key figures in the business community.

### **Responsibilities include:**

Aiding in the registration process, assisting our esteemed speakers, facilitating the set-up and take-down procedures.

Conference will be held on April 9, 2024 at CSI Campus in the Fine Arts Building. If you have any questions, contact 208.732.6450 or email Eric Amador [eamador@csi.edu](mailto:eamador@csi.edu)

[Sign Up Here](#)

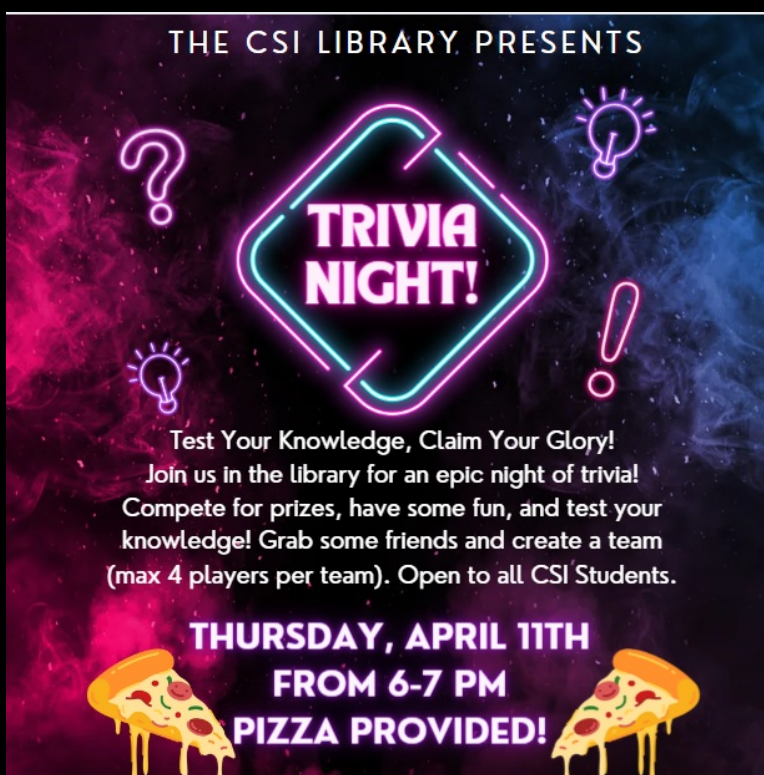
## HOLI-Earth Day Eagle Hour

Thursday, April  
11th  
12:00-2:00 PM

Location: Upper SUB

Celebrate a fusion of Earth Day and HOLI Day with succulents, goodie bags, painting, raffles, games and music!





## CSI Library Trivia Night

Thursday, April  
11th  
6:00 - 7:00PM

Location: CSI  
Library

Join us for an epic night of trivia! Compete for prizes, have some fun and test your knowledge! Grob some friends and create a team (max 4 players per team.)

Open to all CSI  
students.

Pizza Provided!



## Arts on Tour

Friday, April 12<sup>th</sup>  
7:30 PM

Location: CSI Fine Arts  
Center

Don't miss your chance to see renowned multi-Grammy winning artists **Mark & Maggie O'Connor** live for the final **Arts on Tour** performance of the season! Tickets are available online by visiting [tickets.csi.edu](https://tickets.csi.edu), over the phone by calling 208.732.6588, or in-person at the CSI Box Office.

Seating is limited so don't delay!

## CSI Library Shakespear Display

Stop by the CSI Library and see our new display "And there's the humor of it" Shakespeare and the four humors.

This exhibit will be in the library until April 13<sup>th</sup>.



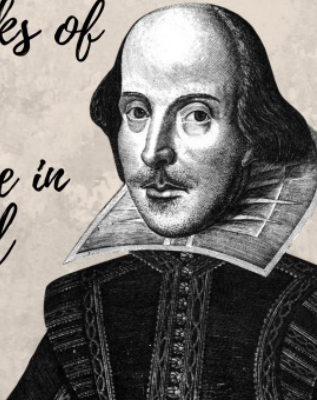
Stop by the CSI Library and see  
our new display:

## “And there’s the humor of it”

SHAKESPEARE AND THE FOUR HUMORS

This traveling display is from the  
National Library of Medicine, and  
explores the four humors and their  
influence on the works of  
Shakespeare.

This exhibit will be in  
the library until  
April 13th.



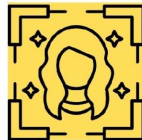
## Mock Interview Workshop

COME PRACTICE YOUR INTERVIEW SKILLS,  
LEARN TIPS, & BUILD YOUR CONFIDENCE

**When:** Tuesday, April 16th 12-2 pm

**Where:** Upper SUB

Eagle Hour Co-hosted by:



Get a free,  
professional  
headshot.

Enjoy snacks &  
prizes!

## Mock Interview Workshop Eagle Hour

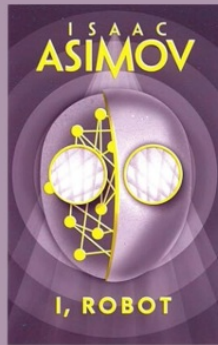
Tuesday, April 16th  
12:00-2:00 PM

Location: Upper SUB

Come practice your  
interview skills, learn tips  
and build your confidence.  
Get a free professional  
headshot, snacks and  
prizes.

CSI Library  
Book Club

## THE CSI LIBRARY BOOK CLUB PICK FOR APRIL IS...



JOIN US IN THE LIBRARY ON THURSDAY, APRIL 25TH, FROM NOON TO 1 TO DISCUSS. COPIES AVAILABLE FOR CHECK OUT! OPEN TO ALL STUDENTS, STAFF AND COMMUNITY MEMBERS!

Join us in the library on Thursday, April 25th from noon to 1:00 to discuss the book, *I, Robot* by Isaac Asimov.

Copies available for check out! Open to all students, staff and community members.

CSI Sunspot Gallery – 2<sup>nd</sup> floor of the Taylor Bldg.  
Currently on View: Calligraphy works from Idaho Ink Spots Calligraphy Guild & Angela Batchelor's GNEC Class



Spring 2024

CSI Sunspot Gallery presents Calligraphy works from Idaho Ink Spots Calligraphy Guild and Angela Batchelor's GNEC Class.

2nd floor of the Taylor Bldg.

## Study Rooms

Have a group project?  
Need a quiet place to study? Call to reserve a student room in the CSI Library. Room must be scheduled at least 1 day in advance.

Contact Allison Beard at  
208-732-6500 or  
abeard2@csi.edu



# HAVE A GROUP PROJECT? NEED A QUIET PLACE TO STUDY?

CALL TO RESERVE A STUDY ROOM IN THE LIBRARY!

ROOMS MUST BE SCHEDULED AT LEAST 1 DAY IN ADVANCE.

Contact Allison Beard at  
208-732-6500 or  
[abeard2@csi.edu](mailto:abeard2@csi.edu)





## Apply to be a Resident Assistant (RA)

### A Resident Assistant

(RA) is a student leader and resident of CSI Student Housing whose main task is to create a sense of belonging and a community of support. As a role model, resource, and advocate for other residents, RAs also serve on the RA Council to assist in events and activities campus wide, respond to emergencies, help create a safe space for residents to thrive, inform residents of campus events, do rounds, and work Cage shifts (EH only).

### Benefits

- Housing scholarship
- Weekly and annual leadership training
- Annual leadership retreat
- Annual Challenge Course experience
- Meal plan scholarship (EH only)

### Job duties

- Create community with CSI student housing residents
- Participate in Leadership Development
- Assist the Residence Coordinator/Apartment Manager and Office of Student Affairs
- Enforce & abide by the Student Code of Conduct & Housing Policies
- Serve on the RA Council
- Plan and execute events & activities (EH)
- Rounds &/or cage shift, weekdays and weekends

### Requirements

- Enroll in & maintain 12+ credits/semester
- Maintain a 2.5+ GPA
- Reside in CSI Housing
- Role model a standard of professional conduct
- Maintain good financial & judicial standing

### FOR MORE INFORMATION

**EAGLE HALL: AIMEE BOYER**

**EMAIL: HOUSING@CSI.EDU**

**PHONE: 208-732-6575**

**EAGLE VIEW: WANDA LUNA**

**EMAIL: WLUNA@CSI.EDU**

**PHONE: 208-733-0740**



**Apply to be a Resident Assistant (RA). An RA is a student leader and resident of CSI Student Housing whose main task is to create a sense of belonging and a community of support. Benefits include a housing scholarship, weekly leadership training, leadership retreat, challenge course experience and meal plan scholarship (EH only).**



## Apply for the Presidential Leaders Program (PLP)

**DEADLINE: April 30, 2024.**

### Highlights of the Program

- Leadership Retreat
- Leadership experience
- CSI Credits paid for
- Stipend for book
- 2 Mentors
- Team Building
- Direct access to CSI Admin for guidance and future support.
- Meet with CSI Business partners on and off campus.

### How do I apply?

- You will need two letters of recommendation and an unofficial transcript ready to upload with your application.
- You must use your csi.edu login to access the application.
- You must submit your complete application by April 30th to be considered for this program.
- 3.5 GPA required



**TO APPLY**  
**SCAN THE QR CODE**



**Apply for the Presidential Leaders Program (PLP). Deadline is April 30th, 2024. Highlights of program include a leadership retreat, CSI credits paid for, stipend for books, 2 mentors, team building, and direct access to CSI Admin for guidance and future support.**



## Get Notifications of Events and Activities on the CSI App

How to Join the Channel-  
Step by Step



**Get notifications of events and activities on the CSI App. 1. open the CSI App > 2. Click on the middle icon > 3. Click the top left menu icon > 4. Select find a channel then choose activities and athletics > 5. Select join channel and now you will be sent notifications on activities and athletics.**



# ENHANCING YOUR STUDENT EXPERIENCE

## **The College of Southern Idaho**

is pleased to announce  
the upcoming change  
of our new Student  
Information System (SIS)  
on **April 1, 2024**.

*No joke!*

## **How does this affect you?**

With this system change,  
your student experience  
will be different. MyCSI,  
registering for classes,  
dropping/withdrawing  
classes, paying tuition, and  
more will have a new look.

## **What can you do now?**

Be proactive! Get advised,  
register for classes, and  
apply for graduation. Do  
what you can before the  
start of spring break,  
**March 20 at 11:59 pm!**

## **When will you see a change?**

When we resume classes after spring  
break on **April 1**, the new system  
will be active.

**NEED HELP?  
ASK AN  
ADVISOR**



The College of Souther Idaho is pleased to announce the upcoming change of our Student Information System on April 1, 2024. With this system change, your student experience will be different. MyCSI, registering for classes, dropping/withdrawing classes, paying tuition, and more will have a new look.



## ABOUT LSAMP

### Thinking about joining?

The LSAMP program at College of Southern Idaho aims to offer you an enriching journey, supporting your personal, academic, and scholarly growth.

As an LSAMP participant, you'll receive comprehensive assistance in social, academic, and professional aspects to empower you in reaching your aspirations.



## CONTACT US

Become a part of a community of diverse scholars in STEM fields.

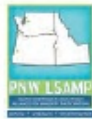
(208) 732-6852  
nkober@csi.edu  
CSI Main Campus  
Shields 203A

### PROGRAM COORDINATOR

Want to know more about the program and see how it might help you? Let's talk!

Schedule a time to meet and learn about LSAMP and research opportunities.

Nikki Kober  
LSAMP Program Coordinator  
nkober@csi.edu



This program is supported by the Pacific Northwest Leeds Stokes Alliance for Minority Participation through the National Science Foundation under Award No. HRD-1610465.

BUILDING STUDENT SUCCESS IN STEM

# LSAMP

## LOUIS STOKES ALLIANCE FOR MINORITY PARTICIPATION

Embark on an exciting adventure within the LSAMP program at the College of Southern Idaho. Join a supportive community that is dedicated to your advancement. Identify your place, ignite your interests. This is your opportunity to define your journey and embrace your dreams.

### CONNECT • ENGAGE • SUCCEED



**Are you interested in becoming a part of a community of diverse scholars in STEM fields? As a LSAMP participant, you'll receive comprehensive assistance in social, academic, and professional aspects to empower you in reaching your aspirations. If you would like to join email [nkober@csi.edu](mailto:nkober@csi.edu) or call 208-732-6852.**



A young child with short brown hair, wearing a blue long-sleeved shirt and grey pants, is crouching on a light-colored floor. The child is focused on playing with several colorful toys, including a red and orange stacking ring and a yellow and green stacking ring. The background is a bright, out-of-focus indoor setting.

# YOU MAY BE ELIGIBLE FOR A CCAMPIS CHILD CARE SCHOLARSHIP

## DO YOU NEED CHILD CARE ASSISTANCE?

- Do you have children under the age of 5?
- Are you a current student at CSI?
- Do you have a GPA of at least 2.0?

If so, you may be eligible for a CCAMPIS Child Care Scholarship.  
Awards are made on a first come first serve basis with committee approval.



### TO APPLY:

Visit [www.csi.edu/financial-aid/scholarships/csi-scholarships.aspx](http://www.csi.edu/financial-aid/scholarships/csi-scholarships.aspx)  
and click on CCAMPIS Child Care Scholarship

### QUESTIONS? Contact:

Jayde Wilson • [jwilson7@csi.edu](mailto:jwilson7@csi.edu) | Clara Centeno • [cccenteno@csi.edu](mailto:ccenteno@csi.edu)  
or talk to the Financial Aid Office

**Do you need child care assistance? Do you have children under the age of 5? Are you a current student at CSI? Do you have a GPA of at least 2.0? If so, you may be eligible for a CCAMPIS Child Care Scholarship. To apply visit [www.csi.edu/financial-aid/scholarships/csi-scholarships.aspx](http://www.csi.edu/financial-aid/scholarships/csi-scholarships.aspx).**



# LIVE ON CAMPUS

## In Eagle Hall



### GET THE FULL COLLEGE EXPERIENCE:

Enjoy events and activities, make connections, friends, and interact with our amazing staff.



**SAVE TIME AND FUEL:** Get extra sleep by eliminating the commute. All classes are within walking distance.



**SAVE MONEY:** Save money on food and rent compared to other local housing options.



**AMENITIES:** Computer Lab, Activity Center, Meal Plan included, access to the Student Rec Center and free parking.



**SCAN FOR  
MORE INFO**

### CONTACT

**AIMEE BOYER - Residence Hall Coordinator**  
housing@csi.edu      208.732.6575



### Live on Campus - In Eagle Hall

Get the full college experience and save time, fuel and money!  
Contact our Residence Hall Coordinator - Aimee Boyer at housing@csi.edu or  
208.732.6575 if you are interested.





## 2024-2025 Agriculture Department & NextGen SCHOLARSHIP



Apply today!

1st Priority Deadline: **Tuesday, April 9**

2nd Priority Deadline: **Tuesday, May 7**

**“How will your chosen field of study benefit the agriculture, food, or natural resource industries?”**

**CONTACT SHALANI MAY**  
CSI NextGen Grant Manager

✉ [swilcox2@csi.edu](mailto:swilcox2@csi.edu)

☎ 208-732-6499

🌐 <https://www.csi.edu/agriculture-department/scholarships.aspx>



 National Institute of Food and Agriculture  
U.S. DEPARTMENT OF AGRICULTURE

The College of Southern Idaho State has been designated as the basis of race, color, religion, age, sex, national origin, disability, genetic status, protected veteran status, or sexual orientation. This policy applies to all programs, activities, and facilities, including admissions, admissions, and employment. Individuals having questions or concerns regarding this policy should contact the Office of Institutional Equity, 1000 S. State Street, Room 1000, P.O. Box 162, Twin Falls, ID 83421. For more information, contact the Office of Institutional Equity at (208) 732-6499. This document is available in large print, Braille, and audio format. For more information, contact the Office of Institutional Equity at (208) 732-6499. This document is available in large print, Braille, and audio format. For more information, contact the Office of Institutional Equity at (208) 732-6499.

**Agriculture Department and NextGen Scholarship**

1st Priority Deadline: **Tuesday, April 9, 2024**

2nd Priority Deadline: **May 7, 2024**

Contact Shalani May at [swilcox2@csi.edu](mailto:swilcox2@csi.edu) with any questions.



# Community Events



**EVERYBODY EATS**  
everybody deserves to eat healthy food.

## OFF THE WALL ART SALE

Come check out our large selection of gently used and new affordable art pieces for purchase. Enjoy great music and light refreshments.

**GRAND OPENING**  
**APRIL 19**  
5 pm - 8 pm

**APRIL 20**  
10 am - 4 pm

**FIRST UNITED METHODIST CHURCH**  
360 Shoshone St. E.  
Twin Falls, ID

*All proceeds benefit food insecurity in the Magic Valley.*

## Off the Wall Art Sale

April 19th,  
5:00PM -8:00PM

April 20th  
10:00AM-4:00PM

Location: First United  
Methodist Church 360  
Shoshone St. East, Twin  
Falls

# SERVICES FOR STUDENTS

## CSI Library Spring Semester Hours

January 16- May 10

Monday-Thursday  
7:30am-9:00pm

Friday  
7:30am-4:00pm



CSI LIBRARY

# Spring Semester Hours

MONDAY - THURSDAY

7:30 AM - 9 PM

FRIDAY

7:30 AM - 4 PM

SATURDAY

12 - 4 PM

SUNDAY - CLOSED

Saturday  
12:00pm-4:00pm

Closed Sundays



## Work-Based Learning Center

Did you know CSI has a Work-Based Learning Center that offers career services? Our career coach can guide you to the assessments, tools and opportunities to help lead you to success. A fast, fun, free career assessment can help guide you to your next move, plus we can help update your resume and LinkedIn profile. Learn more about apprenticeships, career coaching, job search support, internships and more career services at our website and schedule a 15-minute consultation

today.

[Website](#)

## LOOKING FOR *ADVENTURE?* FIND IT AT CSI'S CHALLENGE COURSE!



**Experience the exhilaration of being up to 50 feet off the ground in our ropes course on over 40 high elements or play around in our low course with 20 different obstacles that will challenge your physical and mental abilities!**

SCAN FOR  
MORE INFO



## ABOUT US

Looking for something fun to do inside? CSI is the proud owner of one the largest campus-based rope courses in the world!

- Group sizes of 10 to 300
- 20 low elements
- 40 high elements up to 50 feet high!

Our experiential learning programs are custom designed to provide participants with fun and engaging experiences while in an emotionally and physically safe environment regardless of their age or physical ability. We can integrate 100+ games and initiatives along with low/high elements to provide a foundation for the transference of new skills into the workplace and daily living.

**\*FREE FOR CSI STUDENT CLUBS!**

*Every official CSI club and athletic program can participate in an indoor or outdoor challenge course event once a semester.*

**CONTACT US  
CHALLENGECOURSE@CSI.  
EDU 208-732-6696**

### In Person Tutoring

Where: Meyerhoeffer  
Building Room 202  
Sunday: 12:00-4:00PM  
Monday-Thursday:  
11:00AM-8:00PM  
Friday: 11:00AM-4:00PM

### In Person Math Lab Tutoring

Where: Shields Building  
Room 207  
Monday-Friday: 8:00AM-  
4:00PM



# TUTORING

**\$2.00 VOUCHER & FREE TUTORING**

## IN-PERSON TUTORING

**MANY SUBJECTS AVAILABLE**

**Where:**

Meyerhoeffer Building  
 2nd floor of the Library, Room 202

**When:**

Sunday: 12:00pm – 4:00pm  
 Monday – Thursday: 11:00am – 8:00pm  
 Friday – 11:00am – 4:00pm

## ONLINE TUTORING

**MANY SUBJECTS AVAILABLE**

Drop-in or by Appointment

**To Access Online Services:**

1. Visit MyCSI
2. Select "Tutoring"
3. Select "Peer Tutoring Schedules or "Online Writing Lab (CSI OWL)"

## IN-PERSON MATH LAB

**Where:**

Shields Building, Room 207

**When:**

Monday–Friday: 8:00am–4:00pm



**Sharpen Your Skills!**

**Contact Us:** Moriah Leavitt, LTC Coordinator mleavitt2@csi 208-732-6686

Subject Areas

- Math
- Biology
- Chemistry
- Writing
- Business
- Allied Health and others!

Access Tutor Schedules Through MyCSI

[Tutoring](#)

# RIDE

# TFT



## TWIN FALLS TRANSIT

### RELIABLE

RIDE TFT hours of operation are:

**6 a.m. - 9 p.m. Mon. - Fri.**  
**7 a.m. to 9 p.m. Saturdays**

**\$3 Standard fare**  
**\$1 60 and older or with disability**

### CONVENIENT

Download the convenient app and schedule your ride, see your wait time and drivers location, and more!

### SAFE

RIDE TFT is available for individual riders as young as 12 to ride alone. Any age with an adult. Be assured that you and your loved ones are safe.

### FAST

Pick up at your door and drop off at or near your desired location. It's better than a big bus, it's micro transit.

**+1 208-974-7433**



## Ride TFT Twin Falls Transit

Ride TFT hours:  
 Mon-Fri: 6 AM - 9 PM  
 Sat: 7 AM - 9 PM

\$3 Standard fare

Call 208.974.7433 to schedule a ride.

# Looking for Resources?

Check out the Student Support Services. Click on the MYCSI Tab at the top of the CSI homepage and then select Student Services or follow the link

[Student Support Services](#)



If you are a current student who could use food assistance please know that your request will be handled privately and confidentially. You are eligible for a food box twice a month.

Click on the link below to access the form.

### [Gilbert's Pantry Form](#)

Gilbert's Pantry is located in the Student Affairs Office on the 2nd Floor of the Taylor Bldg.



We listen. We care. We help you learn skills for dealing with life.

Student Mental Health Services  
Phone: (208) 732-6260

Located on the 2nd floor of the Taylor Building in the Center for Student Support and Connection.



College Of Southern Idaho  
csieagles

Follow us on snapchat:

**csieagles**

To be in the know of the student events and to ask us any questions you have!

Check out the links below to get more information on services available for you.

[Food and Dining](#)

[Herrett Museum & Planetarium](#)

[Student Housing](#)

[Library](#)

Student Mental Health Services

Outdoor Recreation & Challenge Course

Student Accessibility Services

Recreation Center

Visit the CSI Event Calendar!

Student Activities



College of Southern Idaho | [www.csi.edu](http://www.csi.edu)



College of Southern Idaho | 315 Falls Ave., Twin Falls, ID 83301

[Unsubscribe mstark@csi.edu](mailto:mstark@csi.edu)

[Update Profile](#) | [Constant Contact Data Notice](#)

Sent by [info@csi.edu](mailto:info@csi.edu) powered by



Try email marketing for free today!