

NEWS AND UPDATES

Student Events & Activities Newsletter

February 20, 2024 | Volume 3: Issue 17

Join the CSI Peer Mentoring Program!



CSI PEER MENTORING

When you sign up for the CSI Peer Mentoring Program, you'll be matched with a mentor, a fellow CSI Student, Faculty or Staff, who can offer personalized support and assistance. This mentor can support you as you navigate your goals and challenges, as well as help you access resources that allow you to make the most of your year. You will also be encouraged to participate in the events and activities that we host to help create a sense of belonging and connection during your time at CSI.

[Join Now](#)

CSI Peer Mentoring

When you sign up for the CSI Peer Mentoring Program, you'll be matched with a mentor, a fellow CSI Student, Faculty or Staff, who can offer personalized support and assistance. This mentor can support you as you navigate your goals and challenges, as well as help you access resources that allow you to make the most of your year.

[Join Now](#)

Student Senate Openings

Student Senate is the governing body of the ASCSI. We provide opportunities for scholarship, networking, growth and leadership. We work closely with

STUDENT SENATE

Student Senate is the governing body of the ASCSI. We provide opportunities for scholarship, networking, growth and Leadership. We work closely with students, faculty, and staff to make our campus a better place.

JOIN US TO MAKE A DIFFERENCE



FOR QUESTIONS EMAIL: ASCSIPRES@CSI.EDU



students, faculty, and staff to make our campus a better place.

For any questions or if you would like to apply, please email ascsipres@csi.edu

EVENTS

Student ID with SPRING 2024 sticker is required to attend events. Don't have the sticker, please stop by Enrollment Services in the Taylor Building.

Eagle Hour

**Tuesday,
February 20th
12:00-2:00 PM**

Location: Upper SUB

Learn about our open Senate opportunities and get a free dessert! Yummy!!



Eagle Hour!



Tuesday,
February
20th!

12:00-2:00
UPPER SUB



Learn about our open
Senate opportunities
and get a free
dessert!!

Program
Board

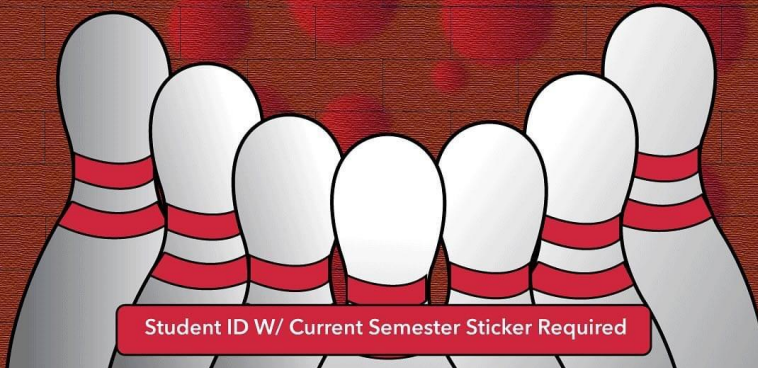
Bowling Blast

Get a Strike, Enter the Raffle

February 21st

10:30pm-12:00am

Bowladrome 220 Eastland Drive



Student ID W/ Current Semester Sticker Required

Bowling Blast

**Wednesday,
February 21st
10:30PM-12:00AM**

**Location:
Bowladrome
220 Eastland Drive.**

Come bowl with us at
Bowladrome!! Free
with Student ID and
current semester
sticker. Get a strike,
enter the raffle!

Student Rec Center

STUDENT REC CENTER EAGLE HOUR

COME JOIN US AT THE STUDENT REC CENTER
FOR NERF WARS, DODGEBALL AND ARCHERY
TAG! FREE PRIZES!



JOIN US

THURSDAY
FEBRUARY 22ND
12:00-2:00



Eagle Hour

Thursday,
February 22nd
12:00-2:00 PM

Location: Student Rec
Center

Come to the Student
Rec Center for Nerf
wars, dodgeball and
archery tag!

Free prizes!

Diaper & Wipe Drive!



Help us in helping moms care for their babies!

Drop off your donations of new
diapers/wipes to our "Love Them Both"
table in the SUB on

Thursday, Feb 22nd noon-2pm,
or email studentsforlife@csi.edu

Diaper and Wipe Drive

Help moms care for
their babies by dropping
off your donations of
new diapers/wipes to
our "Love them Both"
table in the SUB on
Thursday, Feb 22nd
from 12:00-2:00PM or
email
studentsforlife@csi.edu.

Eagle Hour

Tuesday,
February 27th



Need help with FAFSA® and Scholarship Applications?

CSI Financial Aid is partnering with Bridge to Success to help you apply for FAFSA, set up your FSA ID and apply for scholarships!

JOIN US!

Frozen treats provided by  orange leaf frozen yogurt & treats

DATE & TIME

FEBRUARY 27TH
12 PM - 2 PM

LOCATION

STUDENT UNION
BUILDING, 2ND FLOOR



12:00-2:00 PM

Location: Upper SUB

Need help with FAFSA and Scholarship Applications? Come visit us during Eagle Hour.

Free Orange Leaf!

HERRETT CENTER SCIENCE CAMP-IN



NEEDS YOU TO VOLUNTEER

March 8-9, 2024

Call 208-732-6664 or email sphamblen@csi.edu with questions or comments



HERRETT CENTER  **COLLEGE OF SOUTHERN IDAHO**

MORE INFO & SIGN-UPS

Volunteers Needed!

Herrett Center Science Camp-In

March 8-9th

Volunteers guide 3rd, 4th and 5th grade campers through on-campus STEM workshops, telescopes, a planetarium show, a guided activity with the Idaho National Laboratory, and a sleepover in the museum galleries! Of course, volunteers get to participate in all the fun, too!

Volunteering at the Herrett Center Science Camp-In is a great way to gain service hours and expand your skills.

[Sign Up Here](#)



6th Annual All Business Conference Volunteers Needed

Students can actively participate in a professional setting and gain exposure to local entrepreneurs, lenders, and various influential leaders. The conference promises to be a significant networking event, providing volunteers with a unique chance to connect with key figures in the business community.

Responsibilities include:

Aiding in the registration process, assisting our esteemed speakers, facilitating the set-up and take-down procedures.

Conference will be held on April 9, 2024 at CSI Campus in the Fine Arts Building. If you have any questions, contact 208.732.6450 or email Eric Amador eamador@csi.edu

[Sign Up Here](#)



Work Study Openings

Check out the work study opportunities that are available to you!

[Find Info Here](#)

Have you applied for graduation?



APPLY NOW



Have you applied for graduation? You can get information about graduation [here](#) or by going to CSI.edu, current students, registrar and then clicking on graduation. Apply by March 8th, 2024 to ensure your name is in the commencement booklet.



ENHANCING YOUR STUDENT EXPERIENCE

The College of Southern Idaho

is pleased to announce
the upcoming change
of our new Student
Information System (SIS)
on **April 1, 2024**.
No joke!

How does this affect you?

With this system change,
your student experience
will be different. MyCSI,
registering for classes,
dropping/withdrawing
classes, paying tuition, and
more will have a new look.

What can you do now?

Be proactive! Get advised,
register for classes, and
apply for graduation. Do
what you can before the
start of spring break,
March 20 at 11:59 pm!

When will you see a change?

When we resume classes after spring
break on **April 1, the new system
will be active.**

**NEED HELP?
ASK AN
ADVISOR**



The College of Souther Idaho is pleased to announce the upcoming change of our Student Information System on April 1, 2024. With this system change, your student experience will be different. MyCSI, registering for classes, dropping/withdrawing classes, paying tuition, and more will have a new look.



LIVE ON CAMPUS

In Eagle Hall



GET THE FULL COLLEGE EXPERIENCE:

Enjoy events and activities, make connections, friends, and interact with our amazing staff.



SAVE TIME AND FUEL: Get extra sleep by eliminating the commute. All classes are within walking distance.



SAVE MONEY: Save money on food and rent compared to other local housing options.



AMENITIES: Computer Lab, Activity Center, Meal Plan included, access to the Student Rec Center and free parking.



**SCAN FOR
MORE INFO**

CONTACT

AIMEE BOYER - Residence Hall Coordinator
housing@csi.edu 208.732.6575



Live on Campus - In Eagle Hall

Get the full college experience and save time, fuel and money!
Contact our Residence Hall Coordinator - Aimee Boyer at housing@csi.edu or
208.732.6575 if you are interested.

OPEN TO CURRENT AND NEW CSI STUDENTS

CSI GENERAL SCHOLARSHIP APPLICATION

MARCH 1, 2024

Priority Date for the 2024-2025 academic year

Apply now on your MyCSI:
→ Finances tile
→ Scholarships tile
→ CSI Scholarship application

REVIEW
departmental
scholarship
opportunities:



www.csi.edu/financial-aid/scholarships/csi-scholarships.aspx

IDAHO OPPORTUNITY SCHOLARSHIP

Applications and FAFSA are due
MARCH 1, 2024



boardofed.idaho.gov/scholarships/idaho-opportunity-scholarship



CSI
COLLEGE OF
SOUTHERN IDAHO

IDAHO
LAUNCH

APPLICATIONS DUE
APRIL 15
SCAN TO LEARN MORE



CSI General Scholarship

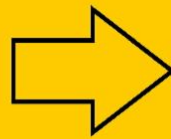
Application due March 1, 2024, for the 2024-2025 academic year.

Apply now on your MyCSI:

- > Finances Title
- > Scholarship Tile
- > CSI Scholarship application

CSI CHILDCARE SCHOLARSHIP NOW OPEN

SCAN
TO LEARN MORE



CSI.EDU/FINANCIAL-AID/SCHOLARSHIPS

CCAMPIS Child Care Scholarship

Do you have children under the age of 5?
Are you a current student at CSI?
Do you have a GPA of at least 2.0?

If so, you may be eligible for a CCAMPIS Child Care Scholarship



2024-2025 Agriculture Department & NextGen SCHOLARSHIP



Apply today!

1st Priority Deadline: **Tuesday, April 9**

2nd Priority Deadline: **Tuesday, May 7**

“How will your chosen field of study benefit the agriculture, food, or natural resource industries?”

CONTACT SHALANI MAY
CSI NextGen Grant Manager

✉ swilcox2@csi.edu

☎ 208-732-6499

🌐 <https://www.csi.edu/agriculture-department/scholarships.aspx>



 National Institute of Food and Agriculture
U.S. DEPARTMENT OF AGRICULTURE

The College of Southern Idaho State has been designated as the basis of race, color, religion, age, sex, national origin, disability, genetic characteristics, ancestry, marital status, pregnancy, childbirth or termination thereof, sex stereotyping, sexual harassment, sexual orientation, gender identity or expression, and employment, including but not limited to, transgender status or gender identity or expression, or citizenship or national origin. This policy applies to all programs, activities, and facilities. For more information, contact the Office of Institutional Equity and Compliance at 208-732-6499 or oei@csi.edu. For more information, contact the Office of Institutional Equity and Compliance at 208-732-6499 or oei@csi.edu. For more information, contact the Office of Institutional Equity and Compliance at 208-732-6499 or oei@csi.edu. For more information, contact the Office of Institutional Equity and Compliance at 208-732-6499 or oei@csi.edu.

Agriculture Department and NextGen Scholarship

1st Priority Deadline: Tuesday, April 9, 2024

2nd Priority Deadline: May 7, 2024

Contact Shalani May at swilcox2@csi.edu with any questions.

Community Events

SERVICES FOR STUDENTS



CSI Library Spring Semester Hours

January 16- May 10

Monday-Thursday
7:30am-9:00pm

Friday
7:30am-4:00pm

Saturday
12:00pm-4:00pm

Closed Sundays



Work-Based Learning Center

Stuck on your career path? Resume help, career coaching and internship matching are right here. Visit the website for more information.

[Website](#)

LOOKING FOR *ADVENTURE?*

FIND IT AT CSI'S CHALLENGE COURSE!



Experience the exhilaration of being up to 50 feet off the ground in our ropes course on over 40 high elements or play around in our low course with 20 different obstacles that will challenge your physical and mental abilities!



**SCAN FOR
MORE INFO**



ABOUT US

Looking for something fun to do inside? CSI is the proud owner of one the largest campus-based rope courses in the world!

- Group sizes of 10 to 300
- 20 low elements
- 40 high elements up to 50 feet high!

Our experiential learning programs are custom designed to provide participants with fun and engaging experiences while in an emotionally and physically safe environment regardless of their age or physical ability. We can integrate 100+ games and initiatives along with low/high elements to provide a foundation for the transference of new skills into the workplace and daily living.

***FREE FOR CSI STUDENT CLUBS!**

Every official CSI club and athletic program can participate in an indoor or outdoor challenge course event once a semester.

CONTACT US
CHALLENGECOURSE@CSI.
EDU 208-732-6696

In Person Tutoring

Where: Meyerhoeffer
Building Room 202
Sunday: 12:00-4:00PM
Monday-Thursday:
11:00AM-8:00PM
Friday: 11:00AM-4:00PM

In Person Math Lab Tutoring

Where: Shields Building
Room 207
Monday-Friday: 8:00AM-
4:00PM

Subject Areas
-Math
-Biology

TUTORING

\$2.00 VOUCHER & FREE TUTORING

IN-PERSON TUTORING

MANY SUBJECTS AVAILABLE

Where:

Meyerhoeffer Building
2nd floor of the Library, Room 202

When:

Sunday: 12:00pm – 4:00pm
Monday – Thursday: 11:00am – 8:00pm
Friday – 11:00am – 4:00pm

ONLINE TUTORING

MANY SUBJECTS AVAILABLE

Drop-in or by Appointment

To Access Online Services:

1. Visit MyCSI
2. Select "Tutoring"
3. Select "Peer Tutoring Schedules or "Online Writing Lab (CSI OWL)"

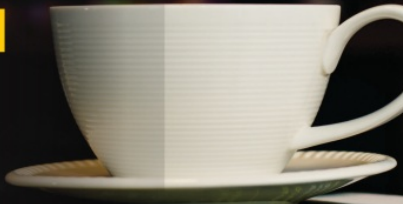
IN-PERSON MATH LAB

Where:

Shields Building, Room 207

When:

Monday–Friday: 8:00am–4:00pm



Sharpen Your Skills!

Contact Us: Moriah Leavitt, LTC Coordinator mleavitt2@csi 208-732-6686

- Chemistry
- Writing
- Business
- Allied Health and others!

Access Tutor
Schedules Through
MyCSI

Tutoring

RIDE

TFT



TWIN FALLS TRANSIT

RELIABLE

RIDE TFT hours of operation are:

6 a.m. - 9 p.m. Mon. - Fri.
7 a.m. to 9 p.m. Saturdays

\$3 Standard fare
\$1 60 and older or with disability

CONVENIENT

Download the convenient app and schedule your ride, see your wait time and drivers location, and more!

SAFE

RIDE TFT is available for individual riders as young as 12 to ride alone. Any age with an adult. Be assured that you and your loved ones are safe.

FAST

Pick up at your door and drop off at or near your desired location. It's better than a big bus, it's micro transit.

+1 208-974-7433



Ride TFT Twin Falls Transit

Ride TFT hours:
Mon-Fri: 6 AM - 9 PM
Sat: 7 AM - 9 PM

\$3 Standard fare

Call 208.974.7433 to
schedule a ride.

Looking for Resources?

Check out the Student Support Services. Click on the MYCSI Tab at the top of the CSI homepage and then select Student Services or follow the link

[Student Support Services](#)



If you are a current student who could use food assistance please know that your request will be handled privately and confidentially. You are eligible for a food box twice a month.

Click on the link below to access the form.

[Gilbert's Pantry Form](#)

Gilbert's Pantry is located in the Student Affairs Office on the 2nd Floor of the Taylor Bldg.



We listen. We care. We help you learn skills for dealing with life.

Student Mental Health Services
Phone: (208) 732-6260

Located on the 2nd floor of the Taylor Building in the Center for Student Support and Connection.



College Of Southern Idaho
csieagles

Follow us on snapchat:

[csieagles](#)

To be in the know of the student events and to ask us any questions you have!

Check out the links below to get more information on services available for you.

[Food and Dining](#)

[Herrett Museum & Planetarium](#)

[Student Housing](#)

[Library](#)

Student Mental Health Services

Outdoor Recreation & Challenge Course

Student Accessibility Services

Recreation Center

Visit the CSI Event Calendar!

Student Activities



College of Southern Idaho | www.csi.edu



College of Southern Idaho | 315 Falls Ave., Twin Falls, ID 83301

[Unsubscribe mstark@csi.edu](mailto:mstark@csi.edu)

[Update Profile](#) | [Constant Contact Data Notice](#)

Sent by info@csi.edu powered by



Try email marketing for free today!