

NEWS AND UPDATES

Student Events & Activities Newsletter

March 11, 2024 | Volume 3: Issue 20

Join the CSI Peer Mentoring Program!



CSI PEER MENTORING

When you sign up for the CSI Peer Mentoring Program, you'll be matched with a mentor, a fellow CSI Student, Faculty or Staff, who can offer personalized support and assistance. This mentor can support you as you navigate your goals and challenges, as well as help you access resources that allow you to make the most of your year. You will also be encouraged to participate in the events and activities that we host to help create a sense of belonging and connection during your time at CSI.

[Join Now](#)

CSI Peer Mentoring

When you sign up for the CSI Peer Mentoring Program, you'll be matched with a mentor, a fellow CSI Student, Faculty or Staff, who can offer personalized support and assistance. This mentor can support you as you navigate your goals and challenges, as well as help you access resources that allow you to make the most of your year.

[Join Now](#)

Spirit Week

Spirit Week Dress Up Days

Monday, March 11th-
"Major Monday": Dress
up like your major.

Tuesday, March 12th-
"Tacky Tourist": Dress
up like a tacky tourist.

SPIRIT WEEK DRESS UP DAYS



Wednesday, March 13th-
"Wild West": Dress up in western wear.
Thursday, March 14th-
"Throwback": Dress up in clothes from a past decade.
Friday, March 15th-
"Spirit Day": Dress up in CSI gear.

SPIRIT

March
11th-15th

WEEK



CLUB FAIR

Start Spirit Week off by visiting the Club Fair and getting to know the clubs and councils!
Upper SUB

11 MON
3pm-5pm

TUE
12
2pm-4pm

TROPICAL TUESDAY

Need something to help cool off? Stop by and get a refreshing beverage!
Upper SUB



EMOTIONAL SUPPORT PLUSHIES

Take a trip to the wild west and adopt one of these adorable bandana wearing plushies!
Upper SUB, HSHS, Evergreen

13 WED
11am-2pm

THU
14
12pm-2pm

SHOW YOUR SPIRIT

Stop by and get a CSI crewneck shirt to show your school spirit for Spirit Week!
Upper SUB



LATE NIGHTS CITY LIGHTS

Dance the final night of Spirit Week away with our New York and Paris inspired dance!
Upper Sub

15 FRI
9pm-12am

Supplies Limited per Event

Student ID with Current Semester Sticker Required

Spirit Week March 11th-15th

March 11th- Club Fair, 3:00-5:00PM in the Upper SUB. Start the week off by visiting the Club Fair and getting to know the clubs and councils!

March 12th-Tropical Tuesday, 2:00-4:00PM in the Upper SUB. Stop by to get a refreshing beverage!

March 13th- Emotional Support Plushies 11:00AM-2:00PM in the Upper SUB, HSHS, Evergreen. Take a trip to the wild west and adopt an adorable bandana wearing plushie!

March 14th- Show Your Spirit 12:00-2:00PM in the Upper SUB. Stop by and get a CSI crewneck shirt to show your school spirit!

March 15th- Late Nights City Lights, 9:00PM-12:00AM in the Upper SUB. Dance the final night of Spirit Week away with our New York and Paris inspired dance!



Late Nights, City Lights

March 15th
9:00PM-12:00AM
Upper SUB

Join us for Spirit Weeks semi-formal dance and capture the memory with our photo booth!

EVENTS

Student ID with SPRING 2024 sticker is required to attend events. Don't have the sticker, please stop by Enrollment Services in the Taylor Building.

Time
Management
Eagle Hour

Tuesday, March
12th
12:00-2:00 PM

The Ticking TIME Management BOMB

TUESDAY,
MARCH 12TH
12:00-2:00PM
UPPER SUB

7 weeks of school left...learn some tips and tricks from Counseling Services to manage your time better and diffuse the end of semester "stress bomb."

Location: Upper SUB

7 weeks of school left...learn some tips and tricks from Counseling Services to manage your time better and diffuse the end of semester "stress bomb".

CSI NUTRITION CLUB FOOD DRIVE

MARCH 11- MARCH 22, 2024

CSI NUTRITION CLUB IS HOLDING THEIR ANNUAL FOOD DRIVE TO BENEFIT GILBERT'S PANTRY.

- ITEMS IN HIGH DEMAND:
- Soup
- Plain Pasta Noodles
- Pasta (spaghetti) sauce
- Sugar
- Cooking Oil
- Dry Beans
- Instant Potatoes
- Juice
- Dish Soap
- Laundry Detergent

PLEASE FILL THIS BAG WITH YOUR NON-EXPIRED DONATIONS. YOU CAN BRING THIS BAG DIRECTLY TO GILBERT'S PANTRY, TAB #235, OR LEAVE IT BY YOUR DOOR AND A CSI NUTRITION CLUB MEMBER WILL PICK IT UP BY 3/22/24. 🍷

CSI Nutrition Club Food Drive

When: March 11th - 20th

CSI Nutrition Club is Holding their annual food drive to benefit Gilbert's Pantry. Please fill a bag with your non-expired donations. You can bring your bag to Gilbert's pantry, Taylor Bldg. room 235.

Lucky Boost



LUCKY BOOST **UNLEASH THE ENERGY OF THE IRISH!**

COME AND INDULGE IN ST. PATRICK-THEMED FLAVORS AT OUR RED BULL BAR! GRAB A CHARM BRACELET, AND A GOODIE BAG FILLED WITH TREATS!

**• MARCH 15TH •
6-8 PM, FRIDAY
• IN THE SUB •**

Unleash the Energy of the Irish!

**When: Friday, March 15th
6:00-8:00PM
Upper SUB**

Come and indulge in St. Patrick-themed flavors of our Red Bull bar! Grab a charm bracelet and a goodie bag filled with treats!

Military & Veterans Club Bowling Night

**When: Saturday, March 16th
@ 1800 (6:00PM)**

Where: Bowladrome

Who: Military & Veteran affiliated CSI students and staff + interested parties.

Military & Veterans Club

Bowling Night

Who: Military & Veteran affiliated CSI students and staff + Interested Parties

Where: Bowladrome

When: Saturday,
16 March 2024
@ 1800

COME OUT FOR A FUN
TIME + BUILD
CAMARADERIE WITH
OTHER SERVICEMEMBERS
& VETERANS IN OUR
LOCAL COMMUNITY!

*CSI Students and Staff club members are covered for 2 hours of bowling and shoe rentals.



Come out for a fun time plus build camaraderie with other servicemembers and veterans in our local community!



6th Annual All Business Conference Volunteers Needed

Students can actively participate in a professional setting and gain exposure to local entrepreneurs, lenders, and various influential leaders. The conference promises to be a significant networking event, providing volunteers with a unique chance to connect with key figures in the business community.

Responsibilities include:

Aiding in the registration process, assisting our esteemed speakers, facilitating the set-up and take-down procedures.

Conference will be held on April 9, 2024 at CSI Campus in the Fine Arts Building. If you have any questions, contact 208.732.6450 or email Eric Amador eamador@csi.edu

[Sign Up Here](#)

HELP US GET TO CAMP!



EACH SPRING BREAK WE GO TO CATALINA ISLAND TO STUDY SCRIPTURE AND TAKE A MUCH NEEDED BREAK FROM SCHOOL

HELP US GET TO CAMP BY BUYING RAFFLE TICKETS. PROCEEDS WILL GO TOWARDS SCHOLARSHIPS FOR REGISTRATION, GAS, AND HOUSING

BUY TICKETS MONDAY IN THE UPPER SUB FROM 3PM-5PM AND WEDNESDAY IN THE TAYLOR CAFE FROM 11AM-1:30PM

RAFFLE TICKETS: \$5

Help Us Get To Camp!

The InterVarsity Club is doing a fundraiser to attend camp during spring break. You can help by buying raffle tickets Monday, March 11th in the Upper SUB from 3:00-5:00PM or Wednesday, March 13th in the Taylor Cafe from 11:00AM-1:30PM

Raffle tickets are \$5.



Work Study Openings

Check out the work study opportunities that are available to you!

[Find Info Here](#)

CSI Sunspot Gallery – 2nd floor of the Taylor Bldg.
Currently on View: Paper Relief Sculptures from Milicia Popovic's Design 2 Class



Spring 2024

CSI Sunspot Gallery presents Paper Relief Sculptures from Milicia Popovic's Design 2 class.

2nd floor of the Taylor Bldg.



Apply to be a Resident Assistant (RA)

A Resident Assistant

(RA) is a student leader and resident of CSI Student Housing whose main task is to create a sense of belonging and a community of support. As a role model, resource, and advocate for other residents, RAs also serve on the RA Council to assist in events and activities campus wide, respond to emergencies, help create a safe space for residents to thrive, inform residents of campus events, do rounds, and work Cage shifts (EH only).

Benefits

- Housing scholarship
- Weekly and annual leadership training
- Annual leadership retreat
- Annual Challenge Course experience
- Meal plan scholarship (EH only)

Job duties

- Create community with CSI student housing residents
- Participate in Leadership Development
- Assist the Residence Coordinator/Apartment Manager and Office of Student Affairs
- Enforce & abide by the Student Code of Conduct & Housing Policies
- Serve on the RA Council
- Plan and execute events & activities (EH)
- Rounds &/or cage shift, weekdays and weekends

Requirements

- Enroll in & maintain 12+ credits/semester
- Maintain a 2.5+ GPA
- Reside in CSI Housing
- Role model a standard of professional conduct
- Maintain good financial & judicial standing

FOR MORE INFORMATION

EAGLE HALL: AIMEE BOYER

EMAIL: HOUSING@CSI.EDU

PHONE: 208-732-6575

EAGLE VIEW: WANDA LUNA

EMAIL: WLUNA@CSI.EDU

PHONE: 208-733-0740



Apply to be a Resident Assistant (RA). An RA is a student leader and resident of CSI Student Housing whose main task is to create a sense of belonging and a community of support. Benefits include a housing scholarship, weekly leadership training, leadership retreat, challenge course experience and meal plan scholarship (EH only).

Get Notifications of Events and Activities on the CSI App

How to Join the Channel-
Step by Step



Get notifications of events and activities on the CSI App. 1. open the CSI App > 2. Click on the middle icon > 3. Click the top left menu icon > 4. Select find a channel then choose activities and athletics > 5. Select join channel and now you will be sent notifications on activities and athletics.



ENHANCING YOUR STUDENT EXPERIENCE

The College of Southern Idaho

is pleased to announce
the upcoming change
of our new Student
Information System (SIS)
on **April 1, 2024**.
No joke!

How does this affect you?

With this system change,
your student experience
will be different. MyCSI,
registering for classes,
dropping/withdrawing
classes, paying tuition, and
more will have a new look.

What can you do now?

Be proactive! Get advised,
register for classes, and
apply for graduation. Do
what you can before the
start of spring break,
March 20 at 11:59 pm!

When will you see a change?

When we resume classes after spring
break on **April 1, the new system
will be active.**

**NEED HELP?
ASK AN
ADVISOR**



The College of Souther Idaho is pleased to announce the upcoming change of our Student Information System on April 1, 2024. With this system change, your student experience will be different. MyCSI, registering for classes, dropping/withdrawing classes, paying tuition, and more will have a new look.



ABOUT LSAMP

Thinking about joining?

The LSAMP program at College of Southern Idaho aims to offer you an enriching journey, supporting your personal, academic, and scholarly growth.

As an LSAMP participant, you'll receive comprehensive assistance in social, academic, and professional aspects to empower you in reaching your aspirations.



CONTACT US

Become a part of a community of diverse scholars in STEM fields.

(208) 732-6852
nkober@csi.edu
CSI Main Campus
Shields 203A

PROGRAM COORDINATOR

Want to know more about the program and see how it might help you? Let's talk!

Schedule a time to meet and learn about LSAMP and research opportunities.

Nikki Kober
LSAMP Program Coordinator
nkober@csi.edu



This program is supported by the Pacific Northwest Leeds Stokes Alliance for Minority Participation through the National Science Foundation under Award No. HRD-1610465.

BUILDING STUDENT SUCCESS IN STEM

LSAMP

LOUIS STOKES ALLIANCE FOR MINORITY PARTICIPATION

Embark on an exciting adventure within the LSAMP program at the College of Southern Idaho. Join a supportive community that is dedicated to your advancement. Identify your place, ignite your interests. This is your opportunity to define your journey and embrace your dreams.

CONNECT • ENGAGE • SUCCEED



Are you interested in becoming a part of a community of diverse scholars in STEM fields? As a LSAMP participant, you'll receive comprehensive assistance in social, academic, and professional aspects to empower you in reaching your aspirations. If you would like to join email nkober@csi.edu or call 208-732-6852.



LIVE ON CAMPUS

In Eagle Hall



GET THE FULL COLLEGE EXPERIENCE:

Enjoy events and activities, make connections, friends, and interact with our amazing staff.



SAVE TIME AND FUEL: Get extra sleep by eliminating the commute. All classes are within walking distance.



SAVE MONEY: Save money on food and rent compared to other local housing options.



AMENITIES: Computer Lab, Activity Center, Meal Plan included, access to the Student Rec Center and free parking.



**SCAN FOR
MORE INFO**

CONTACT

AIMEE BOYER - Residence Hall Coordinator
housing@csi.edu 208.732.6575

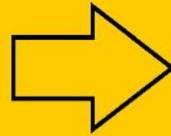


Live on Campus - In Eagle Hall

Get the full college experience and save time, fuel and money!
Contact our Residence Hall Coordinator - Aimee Boyer at housing@csi.edu or
208.732.6575 if you are interested.

CSI CHILDCARE SCHOLARSHIP NOW OPEN

SCAN
TO LEARN MORE



CSI.EDU/FINANCIAL-AID/SCHOLARSHIPS

CCAMPIS Child Care Scholarship

Do you have children under the age of 5?
Are you a current student at CSI?
Do you have a GPA of at least 2.0?

If so, you may be eligible for a CCAMPIS Child Care Scholarship



2024-2025 Agriculture Department & NextGen SCHOLARSHIP



Apply today!

1st Priority Deadline: **Tuesday, April 9**

2nd Priority Deadline: **Tuesday, May 7**

“How will your chosen field of study benefit the agriculture, food, or natural resource industries?”

CONTACT SHALANI MAY
CSI NextGen Grant Manager

✉ swilcox2@csi.edu

☎ 208-732-6499

🌐 <https://www.csi.edu/agriculture-department/scholarships.aspx>



 National Institute of Food and Agriculture
U.S. DEPARTMENT OF AGRICULTURE

The College of Southern Idaho State has been designated as the basis of race, color, religion, age, sex, national origin, disability, genetic status, protected veteran status, or sexual orientation. This policy applies to all programs, activities, and facilities, including admissions, admissions, and employment. Individuals having questions or concerns regarding its compliance with this policy should contact the Office of Institutional Equity, 1000 S. 10th Street, P.O. Box 162000, Boise, ID 83716-2000, or call 208-385-1234. For more information, visit www.csi.edu/equity. The University of Idaho is an affirmative action institution. The University of Idaho is an affirmative action institution. The University of Idaho is an affirmative action institution.

Agriculture Department and NextGen Scholarship

1st Priority Deadline: **Tuesday, April 9, 2024**

2nd Priority Deadline: **May 7, 2024**

Contact Shalani May at swilcox2@csi.edu with any questions.



Voces Internship of Idaho

Investing in Idaho's future Latino journalists

INTERNSHIP INCLUDES:

- PAID \$15/HR NEWSROOM INTERNSHIP
- ASSIGNED PROFESSIONAL JOURNALIST MENTOR
- CAREER-BUILDING TRAINING
- HANDS-ON REPORTING
- FLEXIBLE SCHEDULING

APPLY BY MARCH 18
FOR SUMMER INTERNSHIPS



www.vocesinternship.com



Review our application requirements



Then send them here:

vocesinternshipidaho@gmail.com



Voces Internship of Idaho

Internship includes: paid \$15/HR newsroom internship, assigned professional journalist mentor, career-building training, hands-on report and flexible scheduling. Apply by March 18th at www.vocesinternship.com.

Community Events



OPEN MIC NIGHT: SHORT STORIES & POETRY

MARCH 28TH

6:30 PM - 8:30 PM

JOIN US AT THE TWIN FALLS PUBLIC LIBRARY FOR A NIGHT OF SHORT STORY & POETRY READINGS! SHARE ORIGINAL WORKS, WORKS FROM YOUR FAVORITE AUTHORS, OR JUST COME TO LISTEN! 5 MINUTES PER READING.

TFPL.ORG - 201 4TH AVE E - (208) 733-2964

Twin Falls Public Library: Open Mic Night Short Stories and Poetry

March 28th, 6:30-8:30PM

Location: Twin Falls Public Library

Adult Show & Tell
March 30th, 10:30 am

Do you have an interesting souvenir from a great vacation? Are you an artist or craftsman with pieces that need to be seen? Do you have a rare piece of movie memorabilia? Don't let your cool items sit and gather dust! Come to Adult Show & Tell to show off your object, tell us the story behind it, and see what others have to share.

Twin Falls Public Library: Adult Show and Tell

March 30th, 10:30AM

Location: Twin Falls Public Library

Everybody Eats

Free Meal March 31st, Doors open at 12:30, lunch served at 1:00PM

Location: 360 Shoshone St. East, Twin Falls



**EVERYBODY
EATS** everybody deserves
to eat healthy food.

FREE MEAL | SUNDAY, MAR 31st
Join us for an EVERYBODY EATS meal!
Doors open @12:30pm. Lunch served @1:00pm.

360 Shoshone St. E.

FREE COOKING CLASS!

Class begins @10:30am **COME COOK WITH US!**
Sign-up: everybodyhouse.com/everybodyeats



Free Cooking Class at
10:30AM

Sign-up:
everybodyhouse.com/erbodyeats

OFF THE WALL ART SALE

Come check out our large selection of gently used and new affordable art pieces for purchase. Enjoy great music and light refreshments.

**GRAND OPENING
APRIL 19**
5 pm - 8 pm

APRIL 20
10 am - 4 pm

**FIRST UNITED
METHODIST CHURCH**

360 Shoshone St. E.
Twin Falls, ID

All proceeds benefit food insecurity in the Magic Valley.

Off the Wall Art Sale

April 19th,
5:00PM - 8:00PM

April 20th
10:00AM - 4:00PM

Location: First United
Methodist Church 360
Shoshone St. East, Twin
Falls

CSI Library Events

**CSI Library
Spring
Semester
Hours**



CSI LIBRARY
Spring Semester Hours

MONDAY - THURSDAY
7:30 AM - 9 PM

FRIDAY
7:30 AM - 4 PM

SATURDAY
12 - 4 PM

SUNDAY - CLOSED

January 16- May 10

Monday-Thursday
7:30am-9:00pm

Friday
7:30am-4:00pm

Saturday
12:00pm-4:00pm

Closed Sundays



COME TO THE
LIBRARY AND
MAKE A
ST. PATRICK'S
DA 
CRAFT

*AVAILABLE THE WEEK OF 3/11-3/15
WHILE SUPPLIES LAST

CSI Library St. Patrick's Day Craft

Available the week of
March 11th-15th
While supplies last!

Come to the CSI
Library and make a St.
Patrick's Day Craft!

CSI Library Open Mic Night



Tuesday, March 12th
6:00-8:00PM

Share songs, raps,
short stories, and
poems at CSI Library
open mic night.



CSI Library Art Show

Friday, March 22nd
3:00-4:00PM

Picture it - fresh art at
the Fourth Wall
Gallery! To boot you'll
get an opportunity to
meet the artists. Join
us at an upcoming art
reception to behold
beauty, chat with the
creatives and enjoy
some light snacks and
beverages.

CSI Library Shakespear Display

Stop by the CSI Library
and see our new display
"And there's the humor
of it" Shakespeare and

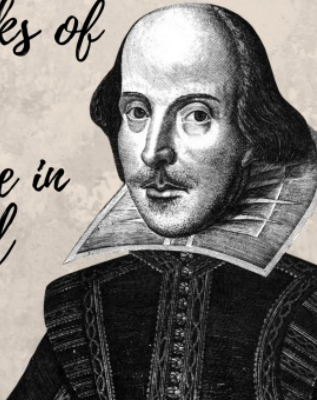
Stop by the CSI Library and see
our new display:

“And there’s the humor of it”

SHAKESPEARE AND THE FOUR HUMORS

This traveling display is from the
National Library of Medicine, and
explores the four humors and their
influence on the works of
Shakespeare.

This exhibit will be in
the library until
April 13th.



the four humors.

This exhibit will be in
the library until April
13th.

SERVICES FOR STUDENTS



Stuck on your
career path?
Resume help,
career coaching
and internship
matching are
right here!

get help now!

CSI WORK-BASED
LEARNING CENTER

Work-Based Learning Center

Stuck on your career
path? Resume help,
career coaching and
internship matching are
right here. Visit the
website for more
information.

[Website](#)

ABOUT US

Looking for something fun to
do inside? CSI is the proud
owner of one the largest
campus-based rope courses

LOOKING FOR *ADVENTURE?*

FIND IT AT CSI'S CHALLENGE COURSE!



Experience the exhilaration of being up to 50 feet off the ground in our ropes course on over 40 high elements or play around in our low course with 20 different obstacles that will challenge your physical and mental abilities!

**SCAN FOR
MORE INFO**



in the world!

- Group sizes of 10 to 300
- 20 low elements
- 40 high elements up to 50 feet high!

Our experiential learning programs are custom designed to provide participants with fun and engaging experiences while in an emotionally and physically safe environment regardless of their age or physical ability. We can integrate 100+ games and initiatives along with low/high elements to provide a foundation for the transference of new skills into the workplace and daily living.

***FREE FOR CSI STUDENT CLUBS!**

Every official CSI club and athletic program can participate in an indoor or outdoor challenge course event once a semester.

CONTACT US
CHALLENGECOURSE@CSI.
EDU 208-732-6696

In Person Tutoring

Where: Meyerhoeffer Building Room 202
Sunday: 12:00-4:00PM
Monday-Thursday:
11:00AM-8:00PM
Friday: 11:00AM-4:00PM

In Person Math Lab Tutoring

Where: Shields Building Room 207
Monday-Friday: 8:00AM-4:00PM

Subject Areas

- Math
- Biology
- Chemistry
- Writing
- Business
- Allied Health and others!

TUTORING

\$2.00 VOUCHER & FREE TUTORING

IN-PERSON TUTORING

MANY SUBJECTS AVAILABLE

Where:

Meyerhoeffer Building
 2nd floor of the Library, Room 202

When:

Sunday: 12:00pm – 4:00pm
 Monday – Thursday: 11:00am – 8:00pm
 Friday – 11:00am – 4:00pm

ONLINE TUTORING

MANY SUBJECTS AVAILABLE

Drop-in or by Appointment

To Access Online Services:

1. Visit MyCSI
2. Select "Tutoring"
3. Select "Peer Tutoring Schedules or "Online Writing Lab (CSI OWL)"

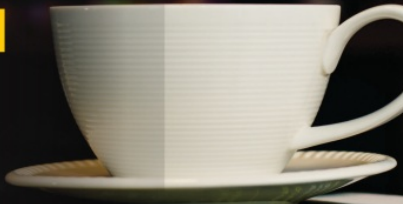
IN-PERSON MATH LAB

Where:

Shields Building, Room 207

When:

Monday–Friday: 8:00am–4:00pm



Sharpen Your Skills!

Contact Us: Moriah Leavitt, LTC Coordinator mleavitt2@csi 208-732-6686

Access Tutor
 Schedules Through
 MyCSI

Tutoring

RIDE

TFT



TWIN FALLS TRANSIT

RELIABLE

RIDE TFT hours of operation are:

6 a.m. - 9 p.m. Mon. - Fri.
7 a.m. to 9 p.m. Saturdays

\$3 Standard fare
\$1 60 and older or with disability

CONVENIENT

Download the convenient app and schedule your ride, see your wait time and drivers location, and more!

SAFE

RIDE TFT is available for individual riders as young as 12 to ride alone. Any age with an adult. Be assured that you and your loved ones are safe.

FAST

Pick up at your door and drop off at or near your desired location. It's better than a big bus, it's micro transit.

+1 208-974-7433



Ride TFT Twin Falls Transit

Ride TFT hours:
 Mon-Fri: 6 AM - 9 PM
 Sat: 7 AM - 9 PM

\$3 Standard fare

Call 208.974.7433 to
 schedule a ride.

Looking for Resources?

Check out the Student Support Services. Click on the MYCSI Tab at the top of the CSI homepage and then select Student Services or follow the link

[Student Support Services](#)



If you are a current student who could use food assistance please know that your request will be handled privately and confidentially. You are eligible for a food box twice a month.

Click on the link below to access the form.

[Gilbert's Pantry Form](#)

Gilbert's Pantry is located in the Student Affairs Office on the 2nd Floor of the Taylor Bldg.



We listen. We care. We help you learn skills for dealing with life.

Student Mental Health Services
Phone: (208) 732-6260

Located on the 2nd floor of the Taylor Building in the Center for Student Support and Connection.



College Of Southern Idaho
csieagles

Follow us on snapchat:

[csieagles](#)

To be in the know of the student events and to ask us any questions you have!

Check out the links below to get more information on services available for you.

[Food and Dining](#)

[Herrett Museum & Planetarium](#)

[Student Housing](#)

[Library](#)

Student Mental Health Services

Outdoor Recreation & Challenge Course

Student Accessibility Services

Recreation Center

Visit the CSI Event Calendar!

Student Activities



College of Southern Idaho | www.csi.edu



College of Southern Idaho | 315 Falls Ave., Twin Falls, ID 83301

[Unsubscribe mstark@csi.edu](mailto:mstark@csi.edu)

[Update Profile](#) | [Constant Contact Data Notice](#)

Sent by info@csi.edu powered by



Try email marketing for free today!