

NEWS AND UPDATES

Student Events & Activities Newsletter

March 18, 2024 | Volume 3: Issue 21

Join the CSI Peer Mentoring Program!



CSI PEER MENTORING

When you sign up for the CSI Peer Mentoring Program, you'll be matched with a mentor, a fellow CSI Student, Faculty or Staff, who can offer personalized support and assistance. This mentor can support you as you navigate your goals and challenges, as well as help you access resources that allow you to make the most of your year. You will also be encouraged to participate in the events and activities that we host to help create a sense of belonging and connection during your time at CSI.

[Join Now](#)

CSI Peer Mentoring

When you sign up for the CSI Peer Mentoring Program, you'll be matched with a mentor, a fellow CSI Student, Faculty or Staff, who can offer personalized support and assistance. This mentor can support you as you navigate your goals and challenges, as well as help you access resources that allow you to make the most of your year.

[Join Now](#)

Get 2 Movie Tickets

Stop by the Student Affairs Office to get your 2 free movie tickets. Offer valid thru March 22nd or until tickets are gone.

Limited to 100 people.
Must have CSI ID with current semester

sticker.

**STOP BY THE
STUDENT AFFAIRS OFFICE**



**GET 2
MOVIE
TICKETS**



**OFFER VALID
THRU 3/22 OR UNTIL
THEY ARE GONE**



MUST HAVE CSI ID W/CURRENT SEMESTER STICKER

***LIMITED TO 100 PEOPLE**

EVENTS

Student ID with SPRING 2024 sticker is required to attend events. Don't have the sticker, please stop by Enrollment Services in the Taylor Building.



2024-2025 SENATE *Elections*



Explore the student government opportunities available at CSI and consider running for a seat on the ASCSI Student Senate for Fall 2024! You can either scan the QR code or visit the Student Affairs office to get an application form!



Locate a Senator on campus for a delightful treat and an application!

MAR | 18TH | 11AM-1PM

All candidates are required to submit their applications to ASCSIVP@csi.edu by Friday, March 22nd.

2024-2025 Senate Elections

**Monday, March
18th**

**11:00-1:00 PM
Locate a Senator
on campus for a
treat and an
application!**

Consider running for a seat on the ASCSI Student Senate. Visit the Student Affairs office to get an application.



All candidates are required to submit their applications to ASCSIVP@csi.edu by March 22nd.



Spring Into Easter Joy Eagle Hour

Tuesday, March 19th
12:00-2:00 PM

Location: Upper SUB

Join our Easter egg hunt for a chance to win prizes while uncovering the history of Easter.

An Event for You, For Your Future
WGU and CSI are launching a partnership to take your education to the next level. Stop by and learn more.

WGU 

WGU OWL TRANSFER PROGRAM

CSI COLLEGE OF SOUTHERN IDAHO



When:
Tuesday, March 19, 2024
Drop-In Transfer Q&A: 11a - 1p
WGU/CSI Partnership Signing: 12p

Where:
Taylor/Student Union Building

WGU Owl Transfer Program

When: Tuesday, March 19th Drop-In Transfer Q&A 11:00AM-1:00PM
WGU/CSI Partnership Signing: 12:00PM

Where: Taylor/Student Union Building

WGU and CSI are launching a partnership to take your education to the next level. Stop by and learn more.



Wednesday, March 20



INL SIN LÍMITES EVENT

College of Southern Idaho

Twin Falls • 10 a.m. – 3 p.m

Burley • Mini Cassia Center • 5 p.m. – 8 p.m.

Sin Límites is a bilingual event aimed at providing career resources, GED prep, University Internship Opportunities, Full-Time Employment, and partnering with other local and regional organizations.

High School and University Internships Path

10 a.m. to 3:00 p.m.

College of Southern Idaho - Twin Falls
315 Falls Ave., Twin Falls, ID 83301

Full-Time Opportunities & Professional Development Path

5:00 p.m. to 8:00 p.m.

College of Southern Idaho Mini-Cassia Center
1600 Parke Ave., Burley, ID 83318

Food and drinks will be provided.

Register



INL Sin Límites Event

**When: Wednesday,
March 20th**

**Twin Falls Campus -
High School and
University Internships
Path 10:00AM -3:00
PM**

**Burley/Mini Cassia
Center- Full-Time
Opportunities and
Professional
Development Path
5:00-8:00PM**

Sin Límites is a bilingual event aimed at providing career resources, GED prep, University internship opportunities, full-time employment, and partnering with other local and regional organizations.


Make sure to register!

Iftar Night

**Wednesday,
March 20th
7:30 PM**

Location: Upper SUB

Indulge in an evening of dinner while unraveling the essence of Ramadan and a

IFTAR NIGHT

INDULGE IN AN EVENING OF
 DINNER WHILE UNRAVELING
 THE ESSENCE OF RAMADAN,
 AND A MAGHRIB PRAYER LED
 BY IMAM BAKHER ELDIN.

MARCH 20TH @ 7:30 PM
IN THE UPPER SUB

Maghrib prayer led by Imam Bakher Eldin.

Presented by the Diversity Club

CSI NUTRITION CLUB FOOD DRIVE

MARCH 11- MARCH 22, 2024

CSI NUTRITION CLUB IS HOLDING THEIR ANNUAL FOOD DRIVE TO BENEFIT GILBERT'S PANTRY.

ITEMS IN HIGH DEMAND:

- Soup
- Plain Pasta Noodles
- Pasta (spaghetti) sauce
- Sugar
- Cooking Oil
- Dry Beans
- Instant Potatoes
- Juice
- Dish Soap
- Laundry Detergent

Thank you!



PLEASE FILL THIS BAG WITH YOUR NON-EXPIRED DONATIONS. YOU CAN BRING THIS BAG DIRECTLY TO GILBERT'S PANTRY, TAB #235, OR LEAVE IT BY YOUR DOOR AND A CSI NUTRITION CLUB MEMBER WILL PICK IT UP BY 3/22/24. 🍌

CSI Nutrition Club Food Drive

When: March 11th - 20th

CSI Nutrition Club is Holding their annual food drive to benefit Gilbert's Pantry. Please fill a bag with your non-expired donations. You can bring your bag to Gilbert's pantry, Taylor Bldg. room 235.



EAGLE HOUR

WHEN: TUESDAY, APRIL 2ND
12:00-2:00PM

WHERE: UPPER SUB

GET YOUR FRIENDS
TOGETHER TO PLAY SOME
FAMILY FEUD! STAFF AND
FACULTY ARE WELCOME TO
PARTICIPATE.

WE WILL ALSO BE PROVIDING SOME
HELPFUL HANDOUTS ABOUT THE
STUDENT SYSTEM CHANGE.

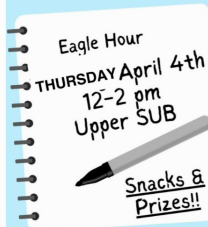
Feud Eagle Hour

Tuesday, April
2nd
12:00-2:00 PM

Location: Upper SUB

Get your friends
together to play some
Family Feud! Staff and
Faculty are welcome
to participate.

We will also be
providing some helpful
handouts about the
coming up student
system changes.



The CSI Work-Based Learning Center & CSI Alumni Association can help you-

- Create a resume
- Prepare for an interview
- Use social media professionally
- Learn about career services available to you on campus

Resume Workshop



Resume Workshop Eagle Hour

Thursday, April 4th
12:00-2:00 PM

Location: Upper SUB

CSI Work-Based Learning Center
and CSI Alumni Association can
help you:

- Create a resume.
- Prepare for an interview.
- Use social media professionally.
- Learn about career services available to you on campus.

Free snacks and prizes!



6th Annual All Business Conference Volunteers Needed

Students can actively participate in a professional setting and gain exposure to local entrepreneurs, lenders, and various influential leaders. The conference promises to be a significant networking event, providing volunteers with a unique chance to connect with key figures in the business community.

Responsibilities include:

Aiding in the registration process, assisting our esteemed speakers, facilitating the set-up and take-down procedures.

Conference will be held on April 9, 2024 at CSI Campus in the Fine Arts Building. If you have any questions, contact 208.732.6450 or email Eric Amador eamador@csi.edu

[Sign Up Here](#)



Mock Interview Workshop

COME PRACTICE YOUR INTERVIEW SKILLS, LEARN TIPS, & BUILD YOUR CONFIDENCE

When: Tuesday, April 16th 12-2 pm

Where: Upper SUB

Eagle Hour Co-hosted by:



Get a free, professional headshot.

Enjoy snacks & prizes!

Mock Interview Workshop Eagle Hour

Tuesday, April 16th
12:00-2:00 PM

Location: Upper SUB

Come practice your interview skills, learn tips and build your confidence. Get a free professional headshot, snacks and prizes.

Work Study
Openings



Check out the work study opportunities that are available to you!

[Find Info Here](#)

CSI Sunspot Gallery – 2nd floor of the Taylor Bldg.
Currently on View: Paper Relief Sculptures from Milica Popovic's Design 2 Class



Spring 2024

CSI Sunspot Gallery presents Paper Relief Sculptures from Milica Popovic's Design 2 class.

2nd floor of the Taylor Bldg.



Apply to be a Resident Assistant (RA)

A Resident Assistant

(RA) is a student leader and resident of CSI Student Housing whose main task is to create a sense of belonging and a community of support. As a role model, resource, and advocate for other residents, RAs also serve on the RA Council to assist in events and activities campus wide, respond to emergencies, help create a safe space for residents to thrive, inform residents of campus events, do rounds, and work Cage shifts (EH only).

Benefits

- Housing scholarship
- Weekly and annual leadership training
- Annual leadership retreat
- Annual Challenge Course experience
- Meal plan scholarship (EH only)

Job duties

- Create community with CSI student housing residents
- Participate in Leadership Development
- Assist the Residence Coordinator/Apartment Manager and Office of Student Affairs
- Enforce & abide by the Student Code of Conduct & Housing Policies
- Serve on the RA Council
- Plan and execute events & activities (EH)
- Rounds &/or cage shift, weekdays and weekends

Requirements

- Enroll in & maintain 12+ credits/semester
- Maintain a 2.5+ GPA
- Reside in CSI Housing
- Role model a standard of professional conduct
- Maintain good financial & judicial standing

FOR MORE INFORMATION

EAGLE HALL: AIMEE BOYER
EMAIL: HOUSING@CSI.EDU
PHONE: 208-732-6575

EAGLE VIEW: WANDA LUNA
EMAIL: WLUNA@CSI.EDU
PHONE: 208-733-0740



Apply to be a Resident Assistant (RA). An RA is a student leader and resident of CSI Student Housing whose main task is to create a sense of belonging and a community of support. Benefits include a housing scholarship, weekly leadership training, leadership retreat, challenge course experience and meal plan scholarship (EH only).



Apply for the Presidential Leaders Program (PLP)

DEADLINE: April 30, 2024.

Highlights of the Program

- Leadership Retreat
- Leadership experience
- CSI Credits paid for
- Stipend for book
- 2 Mentors
- Team Building
- Direct access to CSI Admin for guidance and future support.
- Meet with CSI Business partners on and off campus.

How do I apply?

- You will need two letters of recommendation and an unofficial transcript ready to upload with your application.
- You must use your csi.edu login to access the application.
- You must submit your complete application by April 30th to be considered for this program.
- 3.5 GPA required



TO APPLY
SCAN THE QR CODE



Apply for the Presidential Leaders Program (PLP). Deadline is April 30th, 2024. Highlights of program include a leadership retreat, CSI credits paid for, stipend for books, 2 mentors, team building, and direct access to CSI Admin for guidance and future support.

Get Notifications of Events and Activities on the CSI App

How to Join the Channel-
Step by Step



Get notifications of events and activities on the CSI App. 1. open the CSI App > 2. Click on the middle icon > 3. Click the top left menu icon > 4. Select find a channel then choose activities and athletics > 5. Select join channel and now you will be sent notifications on activities and athletics.



ENHANCING YOUR STUDENT EXPERIENCE

The College of Southern Idaho

is pleased to announce
the upcoming change
of our new Student
Information System (SIS)
on **April 1, 2024.**

No joke!

How does this affect you?

With this system change,
your student experience
will be different. MyCSI,
registering for classes,
dropping/withdrawing
classes, paying tuition, and
more will have a new look.

What can you do now?

Be proactive! Get advised,
register for classes, and
apply for graduation. Do
what you can before the
start of spring break,
March 20 at 11:59 pm!

When will you see a change?

When we resume classes after spring
break on **April 1, the new system
will be active.**

**NEED HELP?
ASK AN
ADVISOR**



The College of Souther Idaho is pleased to announce the upcoming change of our Student Information System on April 1, 2024. With this system change, your student experience will be different. MyCSI, registering for classes, dropping/withdrawing classes, paying tuition, and more will have a new look.



ABOUT LSAMP

Thinking about joining?

The LSAMP program at College of Southern Idaho aims to offer you an enriching journey, supporting your personal, academic, and scholarly growth.

As an LSAMP participant, you'll receive comprehensive assistance in social, academic, and professional aspects to empower you in reaching your aspirations.



CONTACT US

Become a part of a community of diverse scholars in STEM fields.

(208) 732-6852
nkober@csi.edu
CSI Main Campus
Shields 203A

PROGRAM COORDINATOR

Want to know more about the program and see how it might help you? Let's talk!

Schedule a time to meet and learn about LSAMP and research opportunities.

Nikki Kober
LSAMP Program Coordinator
nkober@csi.edu



This program is supported by the Pacific Northwest Leeds Stokes Alliance for Minority Participation through the National Science Foundation under Award No. HRD-1610465.

BUILDING STUDENT SUCCESS IN STEM

LSAMP

LOUIS STOKES ALLIANCE FOR MINORITY PARTICIPATION

Embark on an exciting adventure within the LSAMP program at the College of Southern Idaho. Join a supportive community that is dedicated to your advancement. Identify your place, ignite your interests. This is your opportunity to define your journey and embrace your dreams.

CONNECT • ENGAGE • SUCCEED



Are you interested in becoming a part of a community of diverse scholars in STEM fields? As a LSAMP participant, you'll receive comprehensive assistance in social, academic, and professional aspects to empower you in reaching your aspirations. If you would like to join email nkober@csi.edu or call 208-732-6852.



LIVE ON CAMPUS

In Eagle Hall



GET THE FULL COLLEGE EXPERIENCE:

Enjoy events and activities, make connections, friends, and interact with our amazing staff.



SAVE TIME AND FUEL: Get extra sleep by eliminating the commute. All classes are within walking distance.



SAVE MONEY: Save money on food and rent compared to other local housing options.



AMENITIES: Computer Lab, Activity Center, Meal Plan included, access to the Student Rec Center and free parking.



**SCAN FOR
MORE INFO**

CONTACT

AIMEE BOYER - Residence Hall Coordinator
housing@csi.edu 208.732.6575

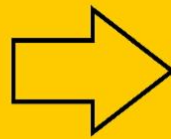


Live on Campus - In Eagle Hall

Get the full college experience and save time, fuel and money!
Contact our Residence Hall Coordinator - Aimee Boyer at housing@csi.edu or
208.732.6575 if you are interested.

CSI CHILDCARE SCHOLARSHIP NOW OPEN

SCAN
TO LEARN MORE



CSI.EDU/FINANCIAL-AID/SCHOLARSHIPS

CCAMPIS Child Care Scholarship

Do you have children under the age of 5?
Are you a current student at CSI?
Do you have a GPA of at least 2.0?

If so, you may be eligible for a CCAMPIS Child Care Scholarship



2024-2025 Agriculture Department & NextGen SCHOLARSHIP



Apply today!

1st Priority Deadline: **Tuesday, April 9**

2nd Priority Deadline: **Tuesday, May 7**

“How will your chosen field of study benefit the agriculture, food, or natural resource industries?”

CONTACT SHALANI MAY
CSI NextGen Grant Manager

✉ swilcox2@csi.edu

☎ 208-732-6499

🌐 <https://www.csi.edu/agriculture-department/scholarships.aspx>



 National Institute of Food and Agriculture
U.S. DEPARTMENT OF AGRICULTURE

The College of Southern Idaho State has been designated as the basis of race, color, religion, age, sex, national origin, disability, genetic characteristics, ancestry, marital status, pregnancy, childbirth or termination thereof, or parental status. This policy applies to all programs, activities, and facilities, including admissions, admissions, and employment. Individuals having questions or concerns regarding this policy should contact the Office of Institutional Equity, 1000 S. State Street, Room 1000, P.O. Box 1626, Twin Falls, ID 83421. For more information, contact the Office of Institutional Equity at (208) 732-6499. This document is available in large print, Braille, and audio format. For more information, contact the Office of Institutional Equity at (208) 732-6499. This document is available in large print, Braille, and audio format. For more information, contact the Office of Institutional Equity at (208) 732-6499.

Agriculture Department and NextGen Scholarship

1st Priority Deadline: Tuesday, April 9, 2024

2nd Priority Deadline: May 7, 2024

Contact Shalani May at swilcox2@csi.edu with any questions.



Voces Internship of Idaho

Investing in Idaho's future Latino journalists

INTERNSHIP INCLUDES:

- PAID \$15/HR NEWSROOM INTERNSHIP
- ASSIGNED PROFESSIONAL JOURNALIST MENTOR
- CAREER-BUILDING TRAINING
- HANDS-ON REPORTING
- FLEXIBLE SCHEDULING

APPLY BY MARCH 18
FOR SUMMER INTERNSHIPS



www.vocesinternship.com



Review our application requirements



Then send them here:

vocesinternshipidaho@gmail.com



Voces Internship of Idaho

Internship includes: paid \$15/HR newsroom internship, assigned professional journalist mentor, career-building training, hands-on report and flexible scheduling. Apply by March 18th at www.vocesinternship.com.

Community Events



OPEN MIC NIGHT: SHORT STORIES & POETRY

MARCH 28TH
6:30 PM - 8:30 PM

JOIN US AT THE TWIN FALLS PUBLIC LIBRARY FOR A NIGHT OF SHORT STORY & POETRY READINGS! SHARE ORIGINAL WORKS, WORKS FROM YOUR FAVORITE AUTHORS, OR JUST COME TO LISTEN! 5 MINUTES PER READING.

TFPL.ORG - 201 4TH AVE E - (208) 733-2964

Twin Falls Public Library: Open Mic Night Short Stories and Poetry

March 28th, 6:30-8:30PM

Location: Twin Falls Public Library

Adult Show & Tell
March 30th, 10:30 am

Do you have an interesting souvenir from a great vacation? Are you an artist or crafts person with pieces that need to be seen? Do you have a rare piece of movie memorabilia? Don't let your cool items sit and gather dust! Come to Adult Show & Tell to show off your object, tell us the story behind it, and see what others have to share.

Twin Falls Public Library: Adult Show and Tell

March 30th,
10:30AM

Location: Twin Falls Public Library

Everybody Eats

Free Meal March 31st,
Doors open at 12:30,
lunch served at 1:00PM

Location: 360 Shoshone St. East, Twin Falls



**EVERYBODY
EATS** everybody deserves
to eat healthy food.

FREE MEAL | SUNDAY, MAR 31st

Join us for an EVERYBODY EATS meal!
Doors open @12:30pm. Lunch served @1:00pm.

360 Shoshone St. E.

FREE COOKING CLASS!

Class begins @10:30am **COME COOK WITH US!**
Sign-up: everybodyhouse.com/everybodyeats



Free Cooking Class at
10:30AM

Sign-up:
everybodyhouse.com/erbodyeats



OFF THE WALL ART SALE

Come check out our large selection of gently used and new affordable art pieces for purchase. Enjoy great music and light refreshments.

**GRAND OPENING
APRIL 19**
5 pm - 8 pm

APRIL 20
10 am - 4 pm

**FIRST UNITED
METHODIST CHURCH**

360 Shoshone St. E.
Twin Falls, ID

All proceeds benefit food insecurity
in the Magic Valley.

Off the Wall Art Sale

April 19th,
5:00PM - 8:00PM

April 20th
10:00AM - 4:00PM

Location: First United
Methodist Church 360
Shoshone St. East, Twin
Falls

CSI Library Events

**CSI Library
Spring
Semester
Hours**



CSI LIBRARY

Spring Semester Hours

MONDAY - THURSDAY

7:30 AM - 9 PM

FRIDAY

7:30 AM - 4 PM

SATURDAY

12 - 4 PM

SUNDAY - CLOSED

January 16- May 10

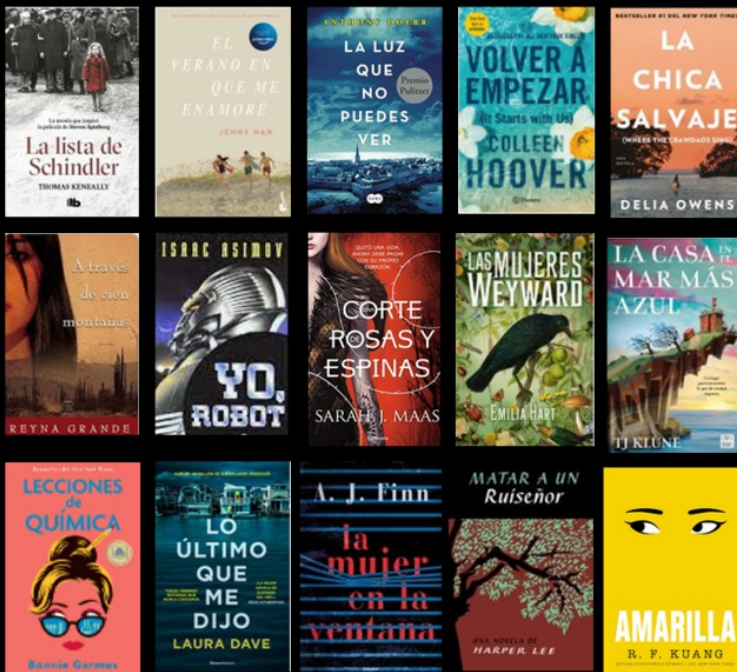
Monday-Thursday
7:30am-9:00pm

Friday
7:30am-4:00pm

Saturday
12:00pm-4:00pm

Closed Sundays

LIBROS NUEVOS EN ESPAÑOL

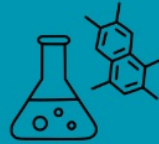
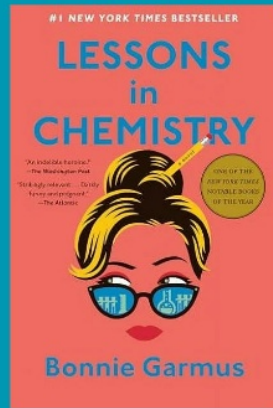


TAKE A LOOK AT THE NEW ADDITIONS TO OUR SPANISH LANGUAGE SECTION

CSI Library Spanish Language Section

Take a look at the new additions to our Spanish Language section!

THE MARCH BOOK CLUB PICK IS...
LESSONS IN CHEMISTRY BY BONNIE GARMUS.



JOIN US ON THURSDAY, MARCH 21ST
IN THE LIBRARY FROM NOON TO ONE.
OPEN TO ALL STAFF, STUDENTS AND
COMMUNITY MEMBERS!

CSI Library Book Club

Thursday, March 21st
12:00-1:00PM

Location: CSI Library

Join us to discuss the book "Lessons in Chemistry" by Bonnie Garmus. Book club is open to all staff, students and community members.



CSI Library Art Show

Friday, March 22nd
3:00-4:00PM

Picture it - fresh art at the Fourth Wall Gallery! To boot you'll get an opportunity to meet the artists. Join us at an upcoming art reception to behold beauty, chat with the creatives and enjoy some light snacks and beverages.

CSI Library Shakespear Display

Stop by the CSI Library and see our new display "And there's the humor

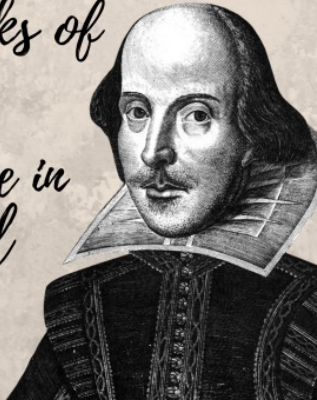
Stop by the CSI Library and see
our new display:

“And there’s the humor of it”

SHAKESPEARE AND THE FOUR HUMORS

This traveling display is from the
National Library of Medicine, and
explores the four humors and their
influence on the works of
Shakespeare.

This exhibit will be in
the library until
April 13th.



of it” Shakespeare and
the four humors.

This exhibit will be in
the library until April
13th.

SERVICES FOR STUDENTS



Stuck on your
career path?
Resume help,
career coaching
and internship
matching are
right here!

get help now!

CSI WORK-BASED
LEARNING CENTER

Work-Based Learning Center

Stuck on your career
path? Resume help,
career coaching and
internship matching are
right here. Visit the
website for more
information.

[Website](#)

ABOUT US

Looking for something fun to
do inside? CSI is the proud
owner of one the largest
campus-based rope courses

LOOKING FOR *ADVENTURE?*

FIND IT AT CSI'S CHALLENGE COURSE!



Experience the exhilaration of being up to 50 feet off the ground in our ropes course on over 40 high elements or play around in our low course with 20 different obstacles that will challenge your physical and mental abilities!

**SCAN FOR
MORE INFO**



in the world!

- Group sizes of 10 to 300
- 20 low elements
- 40 high elements up to 50 feet high!

Our experiential learning programs are custom designed to provide participants with fun and engaging experiences while in an emotionally and physically safe environment regardless of their age or physical ability. We can integrate 100+ games and initiatives along with low/high elements to provide a foundation for the transference of new skills into the workplace and daily living.

***FREE FOR CSI STUDENT CLUBS!**

Every official CSI club and athletic program can participate in an indoor or outdoor challenge course event once a semester.

CONTACT US
CHALLENGECOURSE@CSI.
EDU 208-732-6696

In Person Tutoring

Where: Meyerhoeffer Building Room 202
Sunday: 12:00-4:00PM
Monday-Thursday:
11:00AM-8:00PM
Friday: 11:00AM-4:00PM

In Person Math Lab Tutoring

Where: Shields Building Room 207
Monday-Friday: 8:00AM-4:00PM

Subject Areas

- Math
- Biology
- Chemistry
- Writing
- Business
- Allied Health and others!

TUTORING

\$2.00 VOUCHER & FREE TUTORING

IN-PERSON TUTORING

MANY SUBJECTS AVAILABLE

Where:

Meyerhoeffer Building
 2nd floor of the Library, Room 202

When:

Sunday: 12:00pm – 4:00pm
 Monday – Thursday: 11:00am – 8:00pm
 Friday – 11:00am – 4:00pm

ONLINE TUTORING

MANY SUBJECTS AVAILABLE

Drop-in or by Appointment

To Access Online Services:

1. Visit MyCSI
2. Select "Tutoring"
3. Select "Peer Tutoring Schedules or "Online Writing Lab (CSI OWL)"

IN-PERSON MATH LAB

Where:

Shields Building, Room 207

When:

Monday–Friday: 8:00am–4:00pm



Sharpen Your Skills!

Contact Us: Moriah Leavitt, LTC Coordinator mleavitt2@csi 208-732-6686

Access Tutor
 Schedules Through
 MyCSI

Tutoring

RIDE

TFT



TWIN FALLS TRANSIT

RELIABLE

RIDE TFT hours of operation are:

6 a.m. - 9 p.m. Mon. - Fri.
7 a.m. to 9 p.m. Saturdays

\$3 Standard fare
\$1 60 and older or with disability

CONVENIENT

Download the convenient app and schedule your ride, see your wait time and drivers location, and more!

SAFE

RIDE TFT is available for individual riders as young as 12 to ride alone. Any age with an adult. Be assured that you and your loved ones are safe.

FAST

Pick up at your door and drop off at or near your desired location. It's better than a big bus, it's micro transit.

+1 208-974-7433



Ride TFT Twin Falls Transit

Ride TFT hours:
 Mon-Fri: 6 AM - 9 PM
 Sat: 7 AM - 9 PM

\$3 Standard fare

Call 208.974.7433 to
 schedule a ride.

Looking for Resources?

Check out the Student Support Services. Click on the MYCSI Tab at the top of the CSI homepage and then select Student Services or follow the link

[Student Support Services](#)



If you are a current student who could use food assistance please know that your request will be handled privately and confidentially. You are eligible for a food box twice a month.

Click on the link below to access the form.

[Gilbert's Pantry Form](#)

Gilbert's Pantry is located in the Student Affairs Office on the 2nd Floor of the Taylor Bldg.



We listen. We care. We help you learn skills for dealing with life.

Student Mental Health Services
Phone: (208) 732-6260

Located on the 2nd floor of the Taylor Building in the Center for Student Support and Connection.



College Of Southern Idaho
csieagles

Follow us on snapchat:

csieagles

To be in the know of the student events and to ask us any questions you have!

Check out the links below to get more information on services available for you.

[Food and Dining](#)

[Herrett Museum & Planetarium](#)

[Student Housing](#)

[Library](#)

Student Mental Health Services

Outdoor Recreation & Challenge Course

Student Accessibility Services

Recreation Center

Visit the CSI Event Calendar!

Student Activities



College of Southern Idaho | www.csi.edu



College of Southern Idaho | 315 Falls Ave., Twin Falls, ID 83301

[Unsubscribe mstark@csi.edu](mailto:mstark@csi.edu)

[Update Profile](#) | [Constant Contact Data Notice](#)

Sent by info@csi.edu powered by



Try email marketing for free today!