

# NEWS AND UPDATES

## Student Events & Activities Newsletter

December 1, 2025 | Volume 5: Issue 13

### EVENTS

Student ID/Event Pass is required to attend events. Don't have a Student ID, please stop by Enrollment Services in the Taylor Building.



### Stress Free Week Wreaths and Treats

Monday, December 1st  
5:00-7:00 PM  
Location: Upper SUB

Join us for a cozy craft event! Come get a holiday mini-Lego set (participation required). There will also be wreath decorating, hot chocolate bar and cookies.

While supplies last! Must have student ID or event pass

### Stress Free Week Recharge and

CSIPROBO CSI PROGRAM BOARD CSIPROBO

*Stress Free Week*

# RECHARGE and Relax

**December 2**  
11 am - 2 pm  
Upper SUB

Swing by to pick up Dutch Bros,  
Crumbl cookie and a well  
earned back massage!

While supplies last!

*Must have student ID or Event pass*



## Relax

Tuesday, December 2nd  
12:00-2:00 PM  
Location: Upper SUB

Swing by to pick up Dutch Bros, Crumbl cookie and a well earned back massage!

While supplies last! Must have student ID or event pass

# DODGEBALL

*intramurals*

December 3<sup>rd</sup>  
December 10<sup>th</sup>

6pm to  
7:30 pm

**SHOW UP, HAVE FUN AND  
DESTRESS BEFORE FINALS!**

## Dodgeball Intramurals

December 3rd and  
December 10th  
6:00 - 7:30 PM  
Location: CSI Rec Center

Join us at Dodgeball  
Intramurals! Show up, have  
fun and destress before  
finals!

## Library Book Club

Thursday, December 4th  
12:00-1:00 PM  
Location: CSI Library

The library's book club pick  
is *Project Hail Mary* by Andy

THE **CSI** LIBRARY BOOK  
CLUB PICK IS...  
**PROJECT HAIL MARY**

Weir — a thrilling, witty, and  
surprisingly emotional sci-fi  
adventure!



BOOK CLUB WILL MEET ON  
THURSDAY, DECEMBER 4 AT  
NOON IN THE LIBRARY

**EMPOWER  
YOURSELF  
TO MAKE  
EVERY  
DOLLAR  
COUNT!**



Join us for a workshop  
designed to support  
students living on a  
single income.

**DECEMBER 4TH,  
AT 6PM**

**IN CANYON 119**

**YOU'LL LEARN HOW TO:**

- Create a realistic budget that fits your income and priorities.
- Build savings — even when money feels tight.
- Manage debt.
- Teach your kids positive money habits.

**WHY ATTEND?**

- Empowering yourself financially isn't about making more money — it's about making every dollar work harder for you and your family.

**FOOD WILL BE PROVIDED  
CHILDCARE WILL BE AVAILABLE**



## Single Income Student Workshop

Thursday, December 4th  
6:00 PM

Location: Canyon Building,  
Room 119

Join us for a workshop  
designed to support  
students living on a single  
income. You learn how to  
create a realistic budget  
that fits your income and  
priorities, build savings -  
even when money feels  
tight, manage debt, and  
teach your kids positive  
money habits.

Food will be provided, and  
childcare will be available.



## Library Book Exchange

Friday, December 5th  
2:00 PM

Location: CSI Library

Want to share a book you've enjoyed and unwrap a new one? Join us at the library for a **Holiday Book Exchange Event!**

Bring a gently used book and swap it for a surprise—it's a fun, free way to share stories and discover your next favorite read.

Please wrap your book and include a brief note about why you enjoyed it. Wrapping paper available at the library.



## Writing Matters

February 19th - 20th  
Submissions due January 31st

Are you a poet, a storyteller, an essayist, or a writer? CSI's literary conference for Idaho college and high school students will be featuring Authors Dr. Mikel Vause, Dr. Sarah Vause, and Diana Gibson.

Contact the English Dept. for more details: Clark Draney cdraney@csi.edu.

Submit work [here.](#)

# Financial Opportunities

## Help Wanted




We have multiple Work Study positions open at the CSI Early Learning Center. These positions are for working with children, cleaning, organizing, and/or office help. You will need to qualify for FAFSA to receive the Work Study Grant. Please contact Clara Centeno at (208) 732-6645 or [ccenteno@csi.edu](mailto:ccenteno@csi.edu).

## Work Study Position Open

We have multiple Work Study positions open at the CSI Early Learning Center. In these positions you will be working with children, cleaning, organizing, and/or helping in the office. You will need to qualify for FAFSA to receive the Work Study Grant. Please contact Clara Centeno at (208) 732-6645 or [ccenteno@csi.edu](mailto:ccenteno@csi.edu).

## Scott Wright Student Essay Contest

NISOD and CCCSE invite students enrolled at NISOD member colleges to participate in our Student Essay Contest! Students describe in a 500-word (or less) essay a faculty member, staff member, or administrator who encouraged them during their academic journey and how that encouragement helped them reach their goal(s)



**STUDENT ESSAY CONTEST**

## SCOTT WRIGHT STUDENT ESSAY CONTEST

NISOD and CCCSE invite students enrolled at NISOD member colleges to participate in our Student Essay Contest! Students describe in a 500-word (or less) essay a faculty member, staff member, or administrator who encouraged them during their academic journey and how that encouragement helped them reach their goal(s).

### The Prize

Three (3) winning student authors and the featured faculty members, staff members, or administrators in the winning essays will each receive travel to The NISOD Conference: Advancing Community College Student Engagement (ACCSE) (May 23-26, 2026 in Austin, Texas), which includes:

- Up to \$400 USD toward travel to Austin, Texas;
- Up to two (2) nights lodging for students and one (1) night lodging for the staff, faculty or administrator featured in the essay;
- One (1) complimentary conference registration.

**In addition, the winning students each receive a \$1,000 USD prize!**

*(Note: Winning authors will read their essays on stage during the conference's Excellence Awards Dinner and Celebration on Sunday, May 24).*

### Timeline


- Contest opens: September 5, 2025
- Submission deadline: March 6, 2026
- Winners notified: March 13, 2026
- Winner acceptance due: March 20, 2026
- Prize presented and essay read at the NISOD conference: May 24, 2026

### Evaluation Criteria

Submissions will be evaluated based on the following criteria:

- Content
- Originality
- Clarity
- Organization
- Conciseness
- Grammar

Visit [www.nisod.org/sec](http://www.nisod.org/sec) for complete details.



*The National Institute for Staff and Organizational Development (NISOD) is a consortium of community and technical colleges committed to promoting and celebrating excellence in teaching, learning, and leadership.*

College of Education | The University of Texas at Austin

Three winning students travel to Austin, Texas and receive \$1,000. Submission deadline is March 6, 2026. For more information visit here: [www.nisod.org/sec](http://www.nisod.org/sec).

# SERVICES FOR STUDENTS

## CSI Library Fall Semester Hours

August 11- December 11


Monday-Thursday  
7:30am-9:00pm

Friday  
7:30am-4:00pm

Saturday  
12:00pm-4:00pm

Closed Sundays





**EAGLES EMPOWER**  
SUPPORT GROUP

**WHERE & WHEN**  
Student Union Building Southside 2nd floor  
Wednesdays from 4:00 PM to 4:45 PM

**ABOUT US**

Eagles Empower Support Group is for students who identify with the need to build a campus support network with fellow students.

The group will provide opportunities for students to create more caring and equitable relationships with other students on campus.

**ARE YOU INTERESTED?**

- Sharing Your Story
- Encouraging Others
- Engage in service Opportunities
- Embracing Positivity

**MISSION STATEMENT**

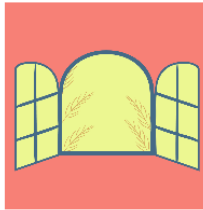
Empowerment defined is the process of becoming stronger and more confident, especially in controlling one's life and claiming one's rights.

## Eagles Empower Support Group

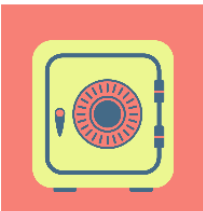
Wednesdays  
4:00 - 4:45 PM  
Location: Taylor Building  
Room 202b

Come join Eagles Empower Support Group. Eagles Empower Support Group is a peer support group for students who identify with the need to build a campus support network with fellow students. The group will provide opportunities for students to create more caring and equitable relationships with other students on campus. Group activities include story exchanges, games, campus

walks, etc. Come and help make someone else's student experience more meaningful. Life is always better with a friend.



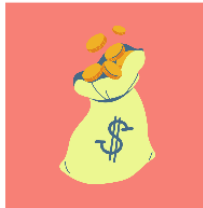
## JOY THIEVES?



**EVERY  
THURS**  
5:30-  
7:30

### STOP THEM TOGETHER

Don't let thieves steal your joy. Join the Flock in the Upper Sub to hang out and help keep your joy safe.



TAYLOR BUILDING - KATE SIMONDS - [KESIMONDS@CSI.EDU](mailto:kesimonds@csi.edu)

## The Flock Support Group

Every Thursday  
5:30 - 7:30 PM

Location: Upper SUB

Stop them together! Don't let thieves steal your joy. Join the Flock to hang out and help keep your joy safe!

If you have questions, contact Kate Simonds at [kesimonds@csi.edu](mailto:kesimonds@csi.edu).



## ARE YOU A SINGLE PARENT OR DISPLACED HOMEMAKER?

### EMAIL

cnd@csi.edu

### PHONE

208.732.6219

### WEBSITE

csi.edu/center-for-new-directions



Stronger careers, brighter futures—  
CSI's Center for New Directions is here to support  
single parents and displaced homemakers on their  
journey to success!

**CSI's Center for New Directions is here to support single parents and displaced homemakers on their journey to success! For information you can email [cnd@csi.edu](mailto:cnd@csi.edu), call 208-732-6219, or visit the website [here](http://csi.edu/center-for-new-directions).**

**CSI WORK-BASED  
LEARNING CENTER**

Stuck on your career path? Resume help, career coaching and internship matching are right here! Visit the Work-Based Learning Center, formerly Career Services, in the ATIC Building.

*get help now!*

[wbl.csi.edu](http://wbl.csi.edu) 208-732-6303

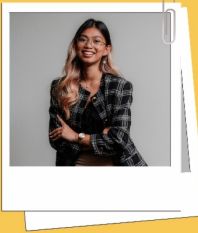
## Work-Based Learning Center

If you're looking for career help, visit the Work-Based Learning Center! WBLC Manager Stefanie Hauff is available to help you find a job or internship or start charting your career path.

### What we do:

- 1-on-1 meeting to identify a career path.
- Paid Internships
- Help with your resume, cover letters and LinkedIn account.
- Mock interviews
- Eagle Job Board is full of real, local job openings from trusted employers.
- Watch our video for more information - [Click Here](#)

## Gilbert's Interview



## GILBERT'S INTERVIEW CLOSET

Are you headed to a job interview, internship, career fair, or networking event? Don't stress about what to wear - we've got you covered. Let us help you show up with confidence!

Free Professional Clothing for CSI Students!

AVAILABLE AT THE WORK- BASED LEARNING CENTER



Blazers

Dress Shirts

Blouses

Pants

Shoes

FREE  
TO  
KEEP!

STOP BY DURING OFFICE HOURS OR SCHEDULE  
AN APPOINTMENT HERE!

### Questions?

Visit the Work-Based Learning Center  
Or call us at 208-732-6303.  
We are located in the Applied Technology & Innovation  
Center, Building #500.



[www.wbl.csi.edu](http://www.wbl.csi.edu) | 208-732-6303 | [wblc@csi.edu](mailto:wblc@csi.edu)

# Closet

Are you headed to a job interview, internship, career fair, or networking event? Don't stress about what to wear - we've got you covered. Let us help you show up with confidence! Stop by the Work-Based Learning Center during office hours to schedule an appointment. The Work-Based Learning Center is located in the Applied Technology and Innovation Center. You can also call 208-732-6303 or email [wblc@csi.edu](mailto:wblc@csi.edu).

# Community

## BUSINESS START-UP SEMINAR

LIVE

### Starting your first business in 2026?

Join us for our December Start Up Seminar!

#### What our seminar covers:

- Business formation essentials
- What's a business plan and how can it help your business grow
- Essentials of Business Taxes
- and more...

#### Speaker(s):

**Bryan Matsuoka**  
Idaho Small Business Development Center  
**Shannon Madsen**  
Small Business Administration  
**Steve Taylor**  
Idaho State Tax Commission

### Event Details

**December 11th, 2025**  
**12:30 PM - 3:30 PM**

Scan Here to Register



Cost: \$65.00

Registration ends  
December 4th, 2025



Questions? Contact Us.  
(208) 732-6450  
[idahosbdc@csi.edu](mailto:idahosbdc@csi.edu)



Funded in part through a Cooperative Agreement with the U.S. Small Business Administration. All opinions, conclusions, and/or recommendations expressed herein are those of the author(s) and do not necessarily reflect the views of the SBA. SBA's participation or support is not an endorsement of any product, service, or entity.

## Business Start-Up Seminar

Thursday, December 11th  
12:30-3:30 PM

Location: SBDC - Southern  
Idaho, Suite #1

Starting your first business in 2026? Join us for our December Start-Up Seminar! We will cover business formation essentials, business plans and business taxes. Cost is \$65. Register at [business.idahosbdc.org](https://business.idahosbdc.org).

# RIDE

# TFT



## TWIN FALLS TRANSIT

### RELIABLE

RIDE TFT hours of operation are:

**6 a.m. - 9 p.m. Mon. - Fri.**  
**7 a.m. to 9 p.m. Saturdays**

**\$3 Standard fare**  
**\$1 60 and older or with disability**

### CONVENIENT

Download the convenient app and schedule your ride, see your wait time and drivers location, and more!

### SAFE

RIDE TFT is available for individual riders as young as 12 to ride alone. Any age with an adult. Be assured that you and your loved ones are safe.

### FAST

Pick up at your door and drop off at or near your desired location. It's better than a big bus, it's micro transit.

**+1 208-974-7433**



## Ride TFT Twin Falls Transit

For current hours visit their website [here](#).

\$3 Standard fare

Call 208.974.7433 to schedule a ride.

## Looking for Resources?

Check out the Student Support Services. Click on the MYCSI Tab at the top of the CSI homepage and then select Student Services or follow the link

[Student Support Services](#)



If you are a current student who could use food assistance please know that your request will be handled privately and confidentially. You are eligible for a food box twice a month.

Click on the link below to access the form.

### [Gilbert's Pantry Form](#)

Gilbert's Pantry is located in the Student Affairs Office on the 2nd Floor of the Taylor Bldg.

We listen. We care. We help you learn skills for dealing with life.

Student Mental Health Services  
Phone: (208) 732-6260



Located on the 2nd floor of the Taylor Building in the Center for Student Support and Connection.



College Of Southern Idaho  
csieagles

Follow us on snapchat:

**csieagles**

To be in the know of the student events and to ask us any questions you have!

**Check out the links below to get more information on services available for you.**

Food and Dining

Herrett Museum & Planetarium

Student Housing

Library

Student Mental Health Services

Outdoor Recreation & Challenge Course

Student Accessibility Services

Recreation Center

Visit the CSI Event Calendar!

Student Activities



College of Southern Idaho | [www.csi.edu](http://www.csi.edu)



College of Southern Idaho | 315 Falls Ave. | Twin Falls, ID 83301 US

[Unsubscribe](#) | [Update Profile](#) | [Constant Contact Data Notice](#)



Try email marketing for free today!